

Rittal – The System.

Faster – better – everywhere.



PB 9817.610

Pushbutton boxes PB

State: 6/30/2024 (Source: rittal.com/us-en)

ENCLOSURES

POWER DISTRIBUTION

CLIMATE CONTROL

IT INFRASTRUCTURE

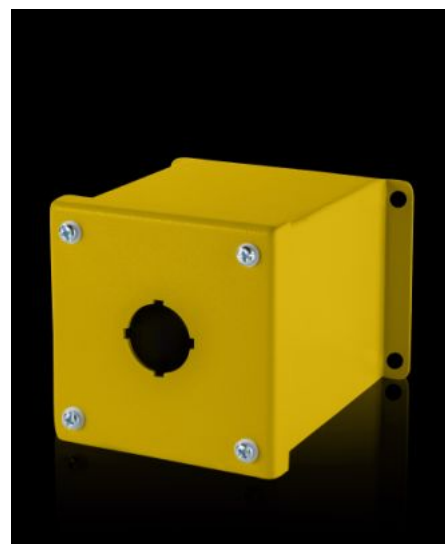
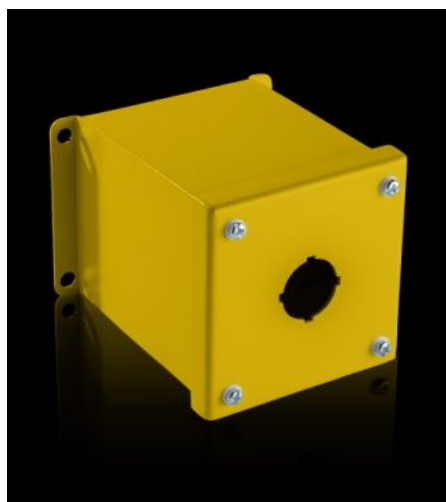
SOFTWARE & SERVICES

FRIEDHELM LOH GROUP



PB 9817.610 - Pushbutton boxes PB extra deep

The NEMA rated PB series pushbutton box enclosure is designed for indoor use to house pushbuttons, selector switches, and pilot lights. This enclosure protects equipment from dirt, dust, sprayed water, oil, and coolants.



Features

Model No.	PB 9817.610
Material	Carbon steel
Surface finish	Housing and cover: Dipcoat primed, powder-coated on the outside, textured paint
Color	RAL 1018
Supply includes	Wall mounting bracket Mounting panel: Zinc-plated Cover screws, captive
Hole diameter	30.5 mm
Number of holes	1
Dimensions	Width: 102 mm Height: 102 mm Depth: 121 mm Width: 4.02 " Height: 4.02 " Depth: 4.76 "

Features

Protection category NEMA	NEMA 12 NEMA 13 NEMA 4
--------------------------	------------------------------

Packaging unit	1 pc(s).
----------------	----------

UPC-Code	93578
----------	-------