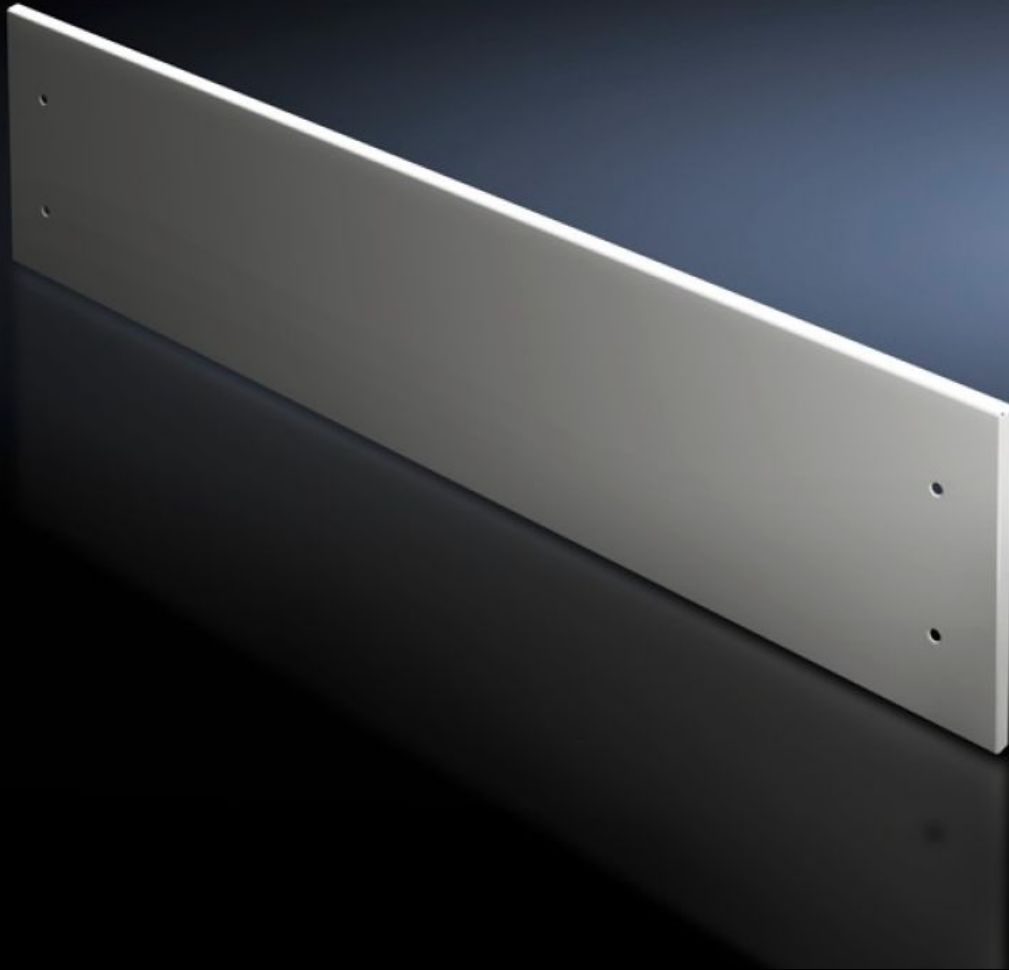


# Rittal – The System.

Faster – better – everywhere.



## SV 9672.316 Front trim panel, top

State: 9/29/2024 (Source: [rittal.com/us-en](https://www.rittal.com/us-en))

ENCLOSURES

POWER DISTRIBUTION

CLIMATE CONTROL

IT INFRASTRUCTURE

SOFTWARE & SERVICES

FRIEDHELM LOH GROUP



# SV 9672.316 - Front trim panel, top for TS

Top closure panel when partial doors are used.

## Features

Model No.	SV 9672.316
Product description	To finish off the modular front design at the top when using partial doors. The front trim panels may be removed from the outside by unscrewing. The cross member required for mounting is included with the supply of the mounted partial doors.
Material	Carbon steel, 2 mm
Surface finish	Textured paint
Color	RAL 7035
Supply includes	Assembly components
Height front panel top	100 mm 3.94 "
Suitable for	Width: = 600 mm Width: = 23.6 "
Packaging unit	1 pc(s).
Weight/packaging unit	1.688 kg 3.7 lb.
Net weight	1.2
Gross weight	1.34
Customs tariff number	94039910
EAN	4028177697348
ETIM 7.0	EC000456
ECLASS 8.0	27142423