

Rittal – The System.

Faster – better – everywhere.



TS 8800.300 Adapter rail

State: 10/6/2024 (Source: rittal.com/us-en)

ENCLOSURES

POWER DISTRIBUTION

CLIMATE CONTROL

IT INFRASTRUCTURE

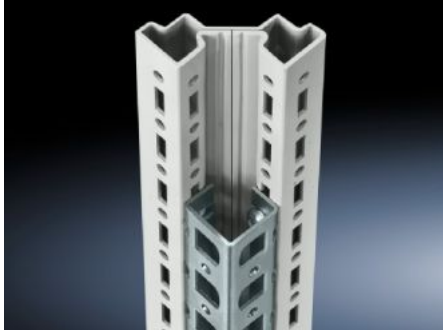
SOFTWARE & SERVICES

FRIEDHELM LOH GROUP



TS 8800.300 - Adapter rail for PS compatibility

Installation in the vertical TS enclosure profiles to create compatibility with: PS hole profile, PS mounting chassis, PS system chassis.



Features

Model No.	TS 8800.300
Product description	To create compatibility with: PS punched rail 23 x 23 mm, PS mounting chassis 23 x 73 mm and PS system chassis 23 x 73 mm.
Material	Carbon steel
Surface finish	Zinc-plated
Supply includes	Assembly screws
Installation options	On the vertical TS, VX SE enclosure section On the horizontal VX SE enclosure section, top, in the width
Suitable for	Enclosure type: TS Height: = 2,000 mm Enclosure type: TS Height: = 78.7 "
Packaging unit	4 pc(s).
Weight/packaging unit	4.252 kg 9.4 lb.
Net weight	4.052
Gross weight	4.252
Customs tariff number	73269098
EAN	4028177212657

Features

ETIM 7.0	EC002625
----------	----------

ECLASS 8.0	27189234
------------	----------