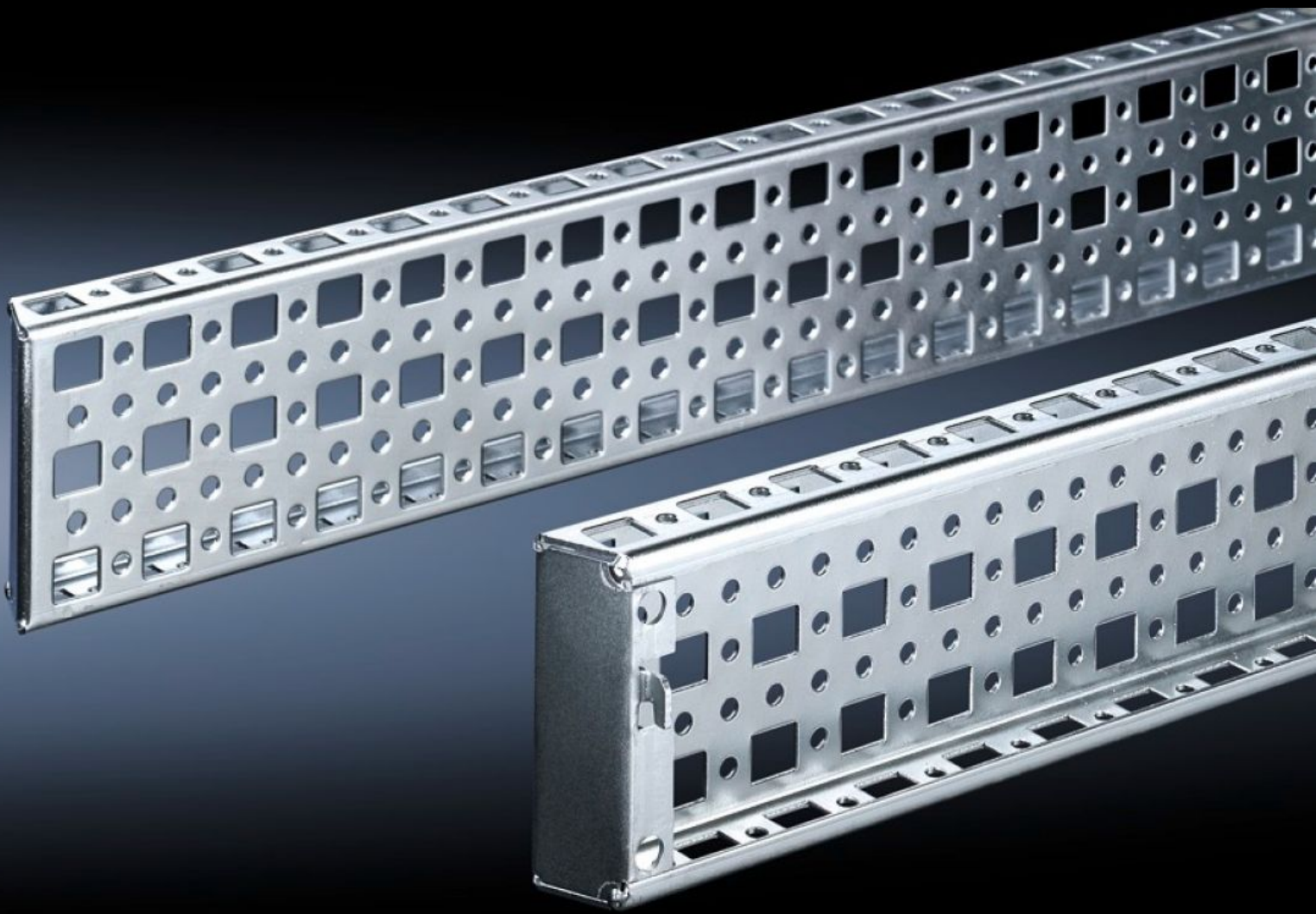


Rittal – The System.

Faster – better – everywhere.



TS 8612.580

TS System Chassis 23 x 73 mm

State: 9/29/2024 (Source: [rittal.com/us-en](https://www.rittal.com/us-en))

ENCLOSURES

POWER DISTRIBUTION

CLIMATE CONTROL

IT INFRASTRUCTURE

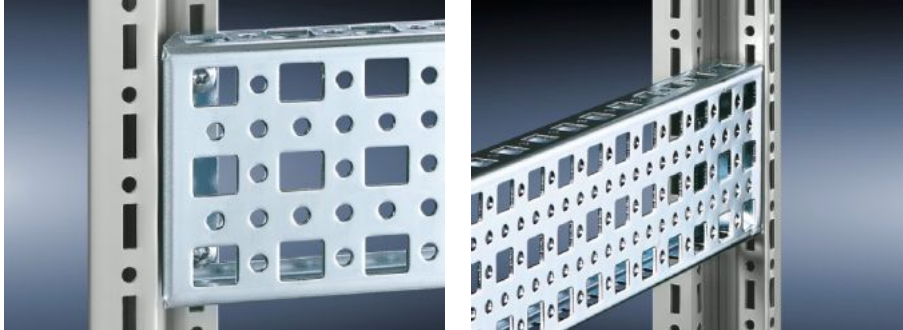
SOFTWARE & SERVICES

FRIEDHELM LOH GROUP



TS 8612.580 - TS System Chassis 23 x 73 mm

The alternative to the TS 17 x 73 mm system chassis, with punchings for captive nuts/speed nuts instead of slotted holes top and bottom. Simply locate and secure.



Features

Model No.	TS 8612.580
Product description	The alternative to the TS 17 x 73 mm system chassis, with punchings for captive nuts/speed nuts instead of slotted holes top and bottom. Simply locate and secure.
Material	Carbon steel
Surface finish	Zinc-plated
Supply includes	Assembly screws
Installation options	On the vertical TS, VX SE enclosure section
Suitable for	Enclosure type: the inner mounting level Suitable for width/depth: 800 mm Enclosure type: the inner mounting level Suitable for width/depth: 31.5 "
Packaging unit	4 pc(s).
Weight/packaging unit	3.624 kg 8 lb.
Net weight	3.424
Gross weight	3.623
Customs tariff number	73269098
EAN	4028177237407

Features

ETIM 7.0	EC002625
----------	----------

ECLASS 8.0	27189234
------------	----------