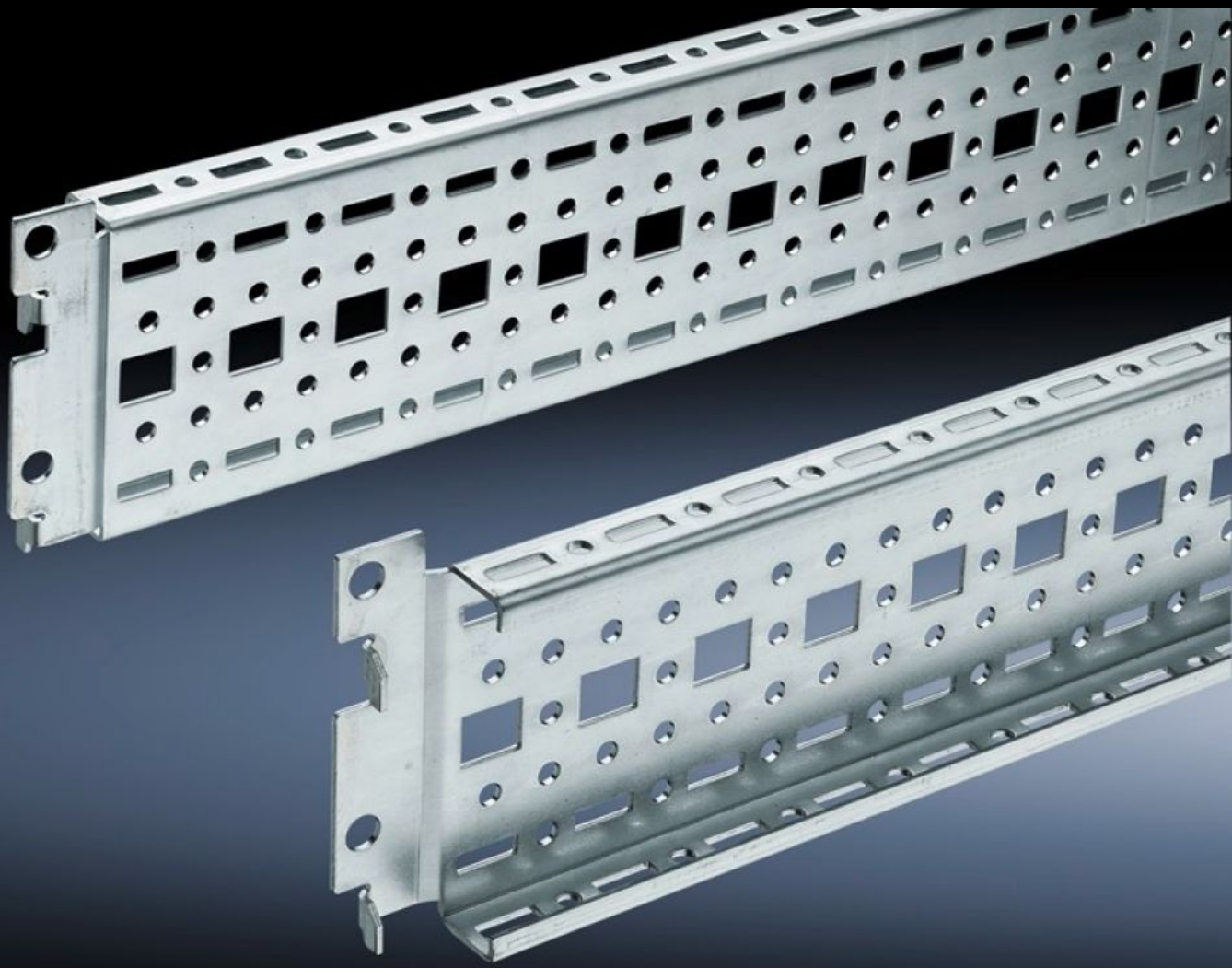


Rittal – The System.

Faster – better – everywhere.



TS 8612.100

TS System Chassis 17 x 73 mm

State: 9/29/2024 (Source: rittal.com/us-en)

ENCLOSURES

POWER DISTRIBUTION

CLIMATE CONTROL

IT INFRASTRUCTURE

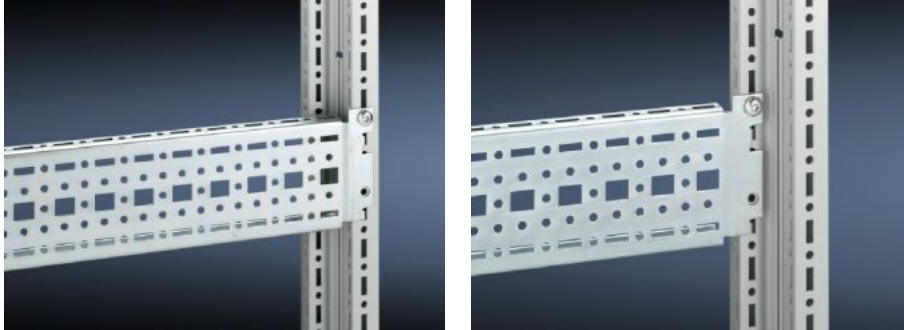
SOFTWARE & SERVICES

FRIEDHELM LOH GROUP



TS 8612.100 - TS System Chassis 17 x 73 mm

For universal skeleton structures or partial assembly. Simply locate into the punchings and secure.



Features

Model No.	TS 8612.100
Version	For the outer mounting level
Product description	For universal skeleton structures or partial assembly. Simply locate onto the punchings and secure.
Material	Carbon steel
Surface finish	Zinc-plated
Supply includes	Assembly screws
Length	940 mm 37 "
Installation options	On the vertical TS, VX SE enclosure profile: on the inner mounting level, all-round, height-offset On the horizontal VX SE enclosure section top, in depth In TP via rails for interior installation: in width, for inner mounting level As installation kit for device bases in TS, VX SE, simply hook in and secure
Mounting tip	The rail for interior installation is required when installing in TP

Features

Suitable for	Enclosure type: VX SE TP PC IW TX CableNet Suitable for width/depth: 1,000 mm Enclosure type: VX SE TP PC IW TX CableNet Suitable for width/depth: 39.4 "
Packaging unit	4 pc(s).
Weight/packaging unit	4.3 kg 9.5 lb.
Net weight	3.956
Gross weight	4.26
PCF/PU (Cradle-to-Gate)	16.4 kg CO2 eq (Cat B)
Note on the PCF class	Category B: PCF value (cradle-to-gate) approximated based on product weight and self-declared
Customs tariff number	73269098
EAN	4028177212114
ETIM 7.0	EC002625
ECLASS 8.0	27189234