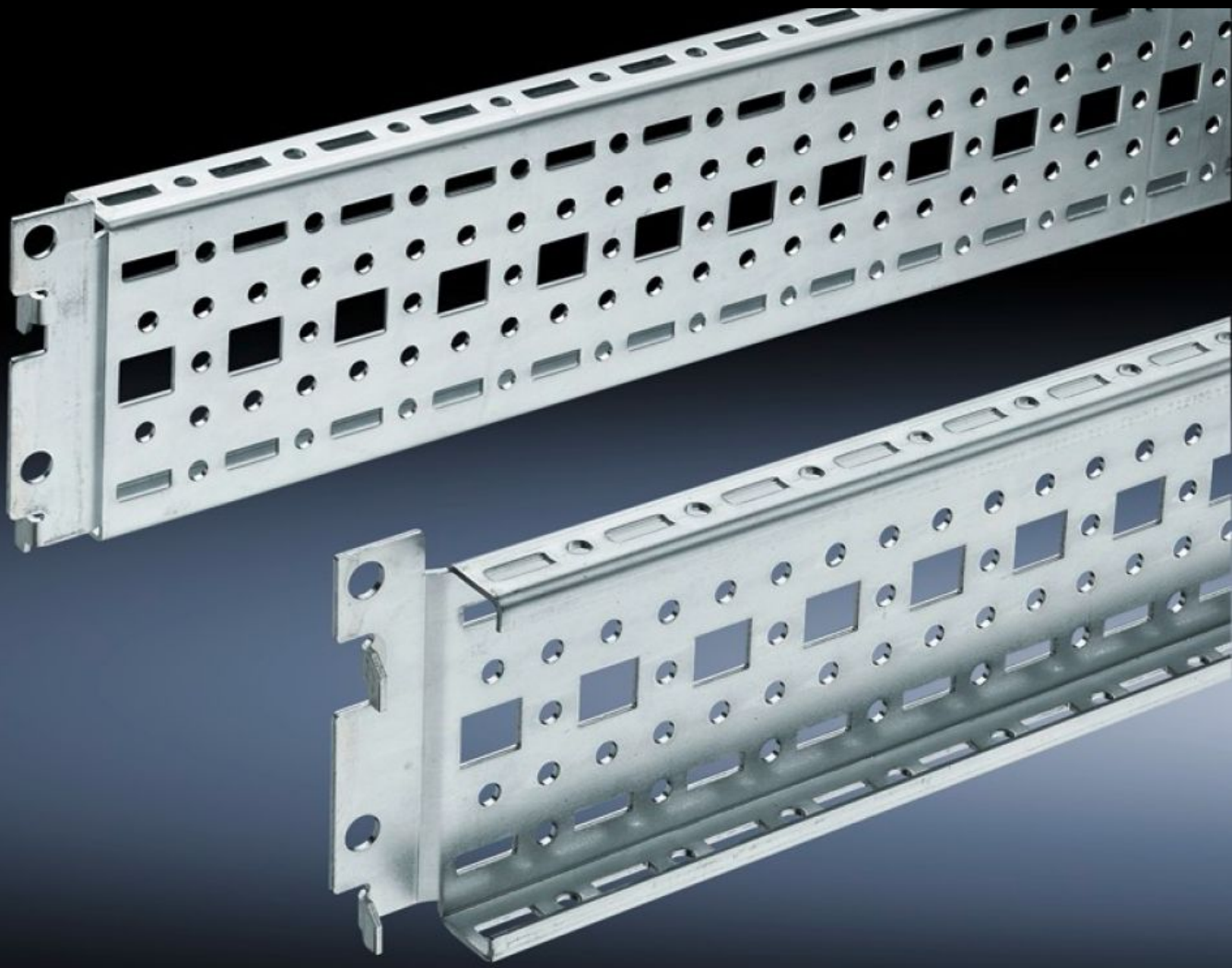


Rittal – The System.

Faster – better – everywhere.



TS 8612.080

TS System Chassis 17 x 73 mm

State: 9/29/2024 (Source: rittal.com/us-en)

ENCLOSURES

POWER DISTRIBUTION

CLIMATE CONTROL

IT INFRASTRUCTURE

SOFTWARE & SERVICES

FRIEDHELM LOH GROUP



TS 8612.080 - TS System Chassis 17 x 73 mm

For universal skeleton structures or partial assembly. Simply locate into the punchings and secure.



Features

Model No.	TS 8612.080
Version	For the inner mounting level and for mounting on doors
Product description	For universal skeleton structures or partial assembly. Simply locate onto the punchings and secure.
Material	Carbon steel
Surface finish	Zinc-plated
Supply includes	Assembly screws
Length	790 mm 31.1 "
Suitable for door width	900 mm 35.4 "
Installation options	On the vertical TS, VX SE enclosure profile: on the inner mounting level, all-round, height-offset For SE, may additionally be mounted on the top horizontal section in the depth In the tubular door frame for TS, SE and PC In TP via rails for interior installation: in width, for inner mounting level As installation kit for device bases in TS, VX SE, simply hook in and secure
Mounting tip	The rail for interior installation is required when installing in TP

Features

Suitable for	Enclosure type: VX SE TP PC IW TX CableNet Suitable for width/depth: 800 mm Enclosure type: VX SE TP PC IW TX CableNet Suitable for width/depth: 31.5 "
Packaging unit	4 pc(s).
Weight/packaging unit	3.584 kg 7.9 lb.
Net weight	3.384
Gross weight	3.54
PCF/PU (Cradle-to-Gate)	13.7 kg CO2 eq (Cat B)
Note on the PCF class	Category B: PCF value (cradle-to-gate) approximated based on product weight and self-declared
Customs tariff number	73269098
EAN	4028177212107
ETIM 7.0	EC002625
ECLASS 8.0	27189234