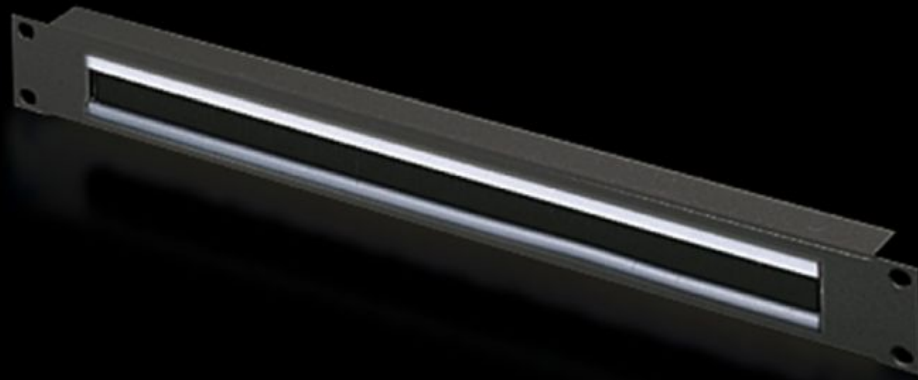


**Rittal – The System.**

Faster – better – everywhere.



**DK 5502.255**

**Cable entry panel with brush strip**

State: 9/26/2024 (Source: [rittal.com/us-en](https://www.rittal.com/us-en))

ENCLOSURES

POWER DISTRIBUTION

CLIMATE CONTROL

IT INFRASTRUCTURE

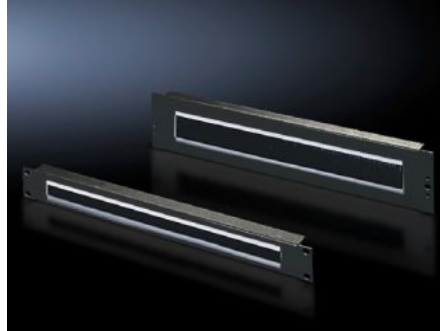
SOFTWARE & SERVICES

FRIEDHELM LOH GROUP



# DK 5502.255 - Cable entry panel with brush strip 482.6 mm (19")

With 390 x 40 mm (2 U) or 390 x 20 mm (1 U) cut-out with brush insert, option of accommodating cable clamp straps.



## Features

Model No.	DK 5502.255
Product description	For convenient, simple cable routing between two areas separated by an imperial mounting level, e.g. between the front and rear areas of the 19" mounting level.
Applications	For locking and simultaneous cable routing in installation zones to the 1 U, 482.6 mm (19") mounting standard
Material	Carbon steel Brush strip: Plastic, UL 94-HB
Surface finish	Spray-finished
Color	RAL 9005
Mounting cut-out	Width:390 mm Height:20 mm Width:15.4 " Height:0.79 "
Dimensions	Width: 482.6 mm Width: 19 "
Height units	1 U
Packaging unit	1 pc(s).

# Features

---

Weight/packaging unit	0.486 kg 1.1 lb.
-----------------------	---------------------

---

Net weight	0.2
------------	-----

---

Gross weight	0.486
--------------	-------

---

Customs tariff number	73269098
-----------------------	----------

---

EAN	4028177679368
-----	---------------

---

E-Number Sweden	E7239792
-----------------	----------

---

ETIM 7.0	EC000322
----------	----------

---

ECLASS 8.0	27400604
------------	----------

---