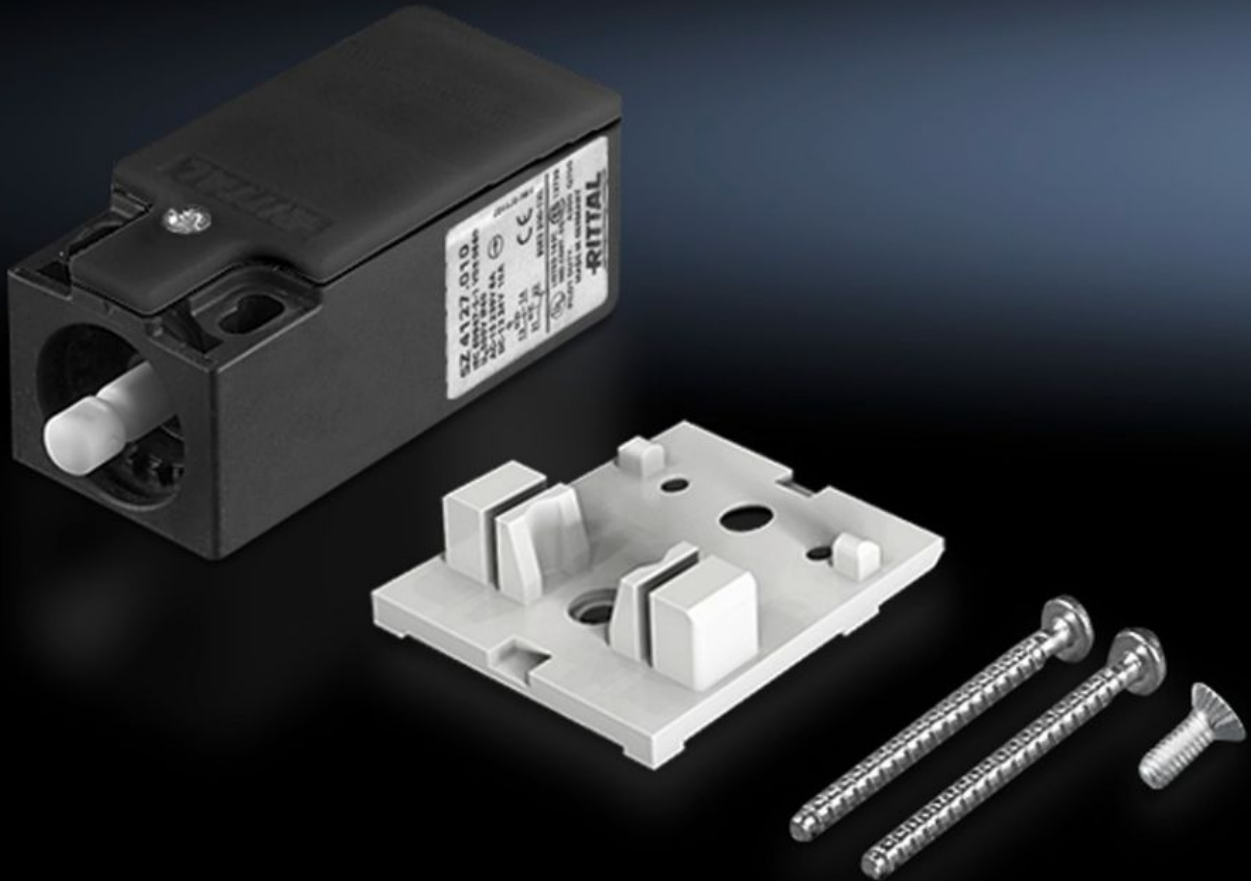


Rittal – The System.

Faster – better – everywhere.



SZ 4127.010 Door-Operated Switch

State: 1/22/2025 (Source: rittal.com/us-en)

ENCLOSURES

POWER DISTRIBUTION

CLIMATE CONTROL

IT INFRASTRUCTURE

SOFTWARE & SERVICES

FRIEDHELM LOH GROUP



SZ 4127.010 - Door-Operated Switch

With mounting accessories, with or without connection cable.

Features

Model No.	SZ 4127.010
Version	without connection cable
Note	For installation in VX IT only in conjunction with VX mounting bracket for door-operated switch.
Rated impulse withstand voltage, phase to phase	6000 V AC
Rated insulation voltage	400 V AC
Installation options	for LED System Light for standard and courtesy lights without an integrated door-operated switch For cooling units and air-water heat exchangers
Electrical connection	240 V AC/6 A 125 V DC/8 A 24 V AC/6 A 24 V DC/6 A
Rated operating voltage	400 V
Protection category IP to IEC 60529	IP 40
Packaging unit	1 pc(s).
Net weight	0.068
Gross weight	0.076
Customs tariff number	85365019
EAN	4028177497740
E-Number Sweden	E3404494
ETIM 9	EC002626
ETIM 8	EC002626

Features

ECLASS 8.0

27189266

Approvals

Approvals

CQC-CCC

CSA

UL + C-UL (listed)

Explanations

Declaration of conformity

Declaration of conformity UK