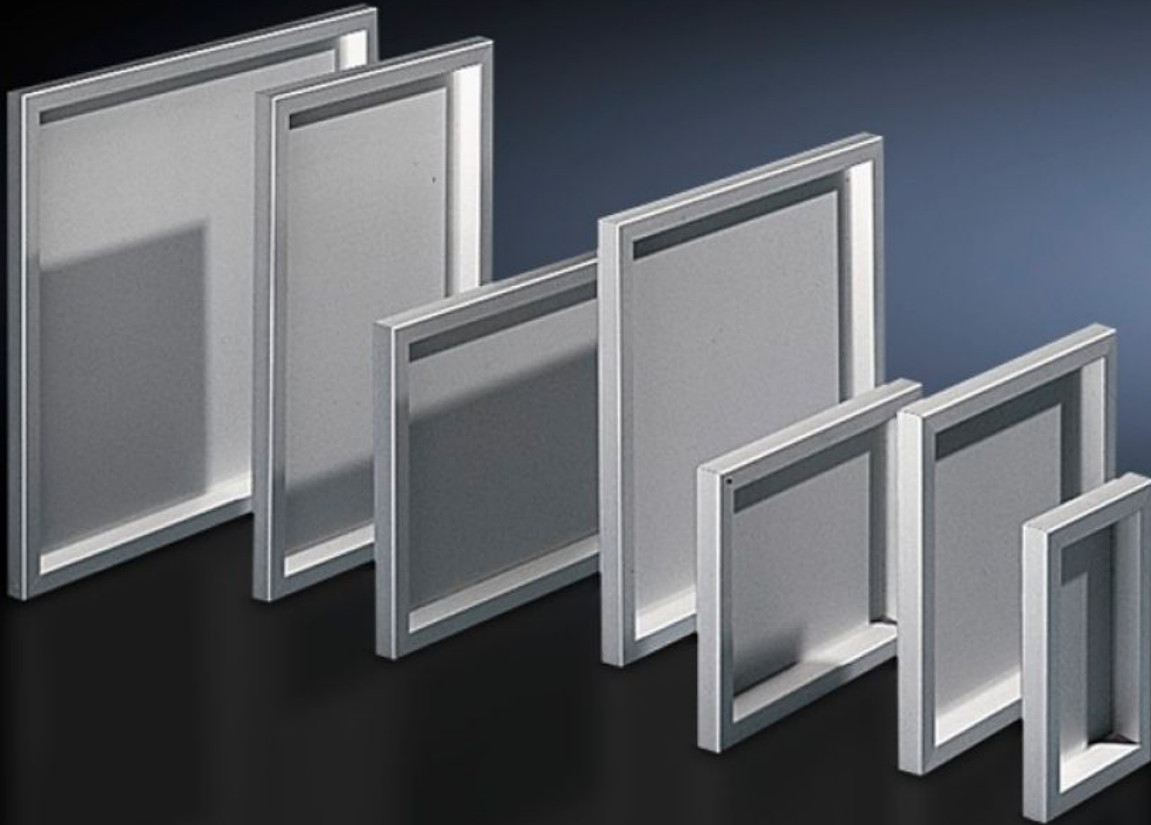


Rittal – The System.

Faster – better – everywhere.



FT 2743.000 Operating panel

State: 7/16/2024 (Source: rittal.com/us-en)

ENCLOSURES

POWER DISTRIBUTION

CLIMATE CONTROL

IT INFRASTRUCTURE

SOFTWARE & SERVICES

FRIEDHELM LOH GROUP



FT 2743.000 - Operating panel for AE/WM

Mounted on AE enclosures instead of door and on surfaces. Frame structure with internal corner connectors, 3 mm aluminum plate secured from the inside and sealed against the frame.



Features

Model No.	FT 2743.000
Product description	Can be used as a door on AE enclosures or mounted on enclosures with sufficient surface area. Frame structure with internal corner connectors, 3 mm aluminum plate secured from the inside and sealed against the frame.
Material	Aluminum, natural anodized
Supply includes	Aluminum frame Display panel Hinges Brackets
Protection category IP to EN 60529	IP 54
Note	During installation, the cam lock is required in place of the door
Suitable for	Enclosure type: AE Width: = 380 mm Height: = 600 mm Enclosure type: AE Width: = 15 " Height: = 23.6 "

Features

Dimensions	Width: 377 mm Height: 597 mm Depth: 34 mm Width: 14.8 " Height: 23.5 " Depth: 1.34 "
------------	---

Dimensions of aluminium plate	Width: 323 mm Height: 543 mm Width: 12.7 " Height: 21.4 "
-------------------------------	--

Area available for population	Width: 307 mm Height: 527 mm Width: 12.1 " Height: 20.7 "
-------------------------------	--

Packaging unit	1 pc(s).
----------------	----------

Weight/packaging unit	4.5 kg 9.9 lb.
-----------------------	-------------------

Customs tariff number	76169990
-----------------------	----------

EAN	4028177031890
-----	---------------

E-Number Sweden	E3404524
-----------------	----------

ETIM 7.0	EC000747
----------	----------

ECLASS 8.0	27182204
------------	----------
