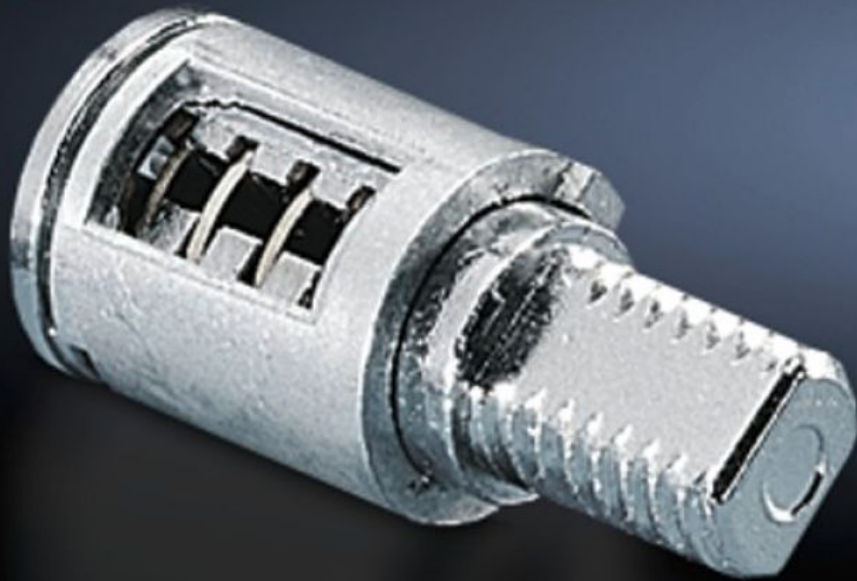


Rittal – The System.

Faster – better – everywhere.



SZ 2525.000

Lock cylinder inserts

State: 8/20/2024 (Source: rittal.com/us-en)

ENCLOSURES

POWER DISTRIBUTION

CLIMATE CONTROL

IT INFRASTRUCTURE

SOFTWARE & SERVICES

FRIEDHELM LOH GROUP



SZ 2525.000 - Lock cylinder inserts

Lock cylinder inserts for cam locks with lock cylinder insert lock no. 3524 E.



Features

Model No.	SZ 2525.000
Version	C
Material	Die-cast zinc
Supply includes	with 2 keys
Length	28.3 mm 1.11 "
Lock	Lock Insert: with cylinder insert, lock no. 3524 E
Suitable for enclosure type	AE with stainless steel cam 1.4301 (AISI 304) One-piece console, console cover, stainless steel
Packaging unit	1 pc(s).
Weight/packaging unit	0.04 kg 0.1 lb.
Customs tariff number	83016000
EAN	4028177026193
ETIM 7.0	EC000743

Features

ECLASS 8.0

27409218