

# Rittal – The System.

Faster – better – everywhere.



## KX 1508.000

## KX terminal box, carbon steel, without flange

State: 4/27/2025 (Source: [rittal.com/us-en](http://rittal.com/us-en))

ENCLOSURES

POWER DISTRIBUTION

CLIMATE CONTROL

IT INFRASTRUCTURE

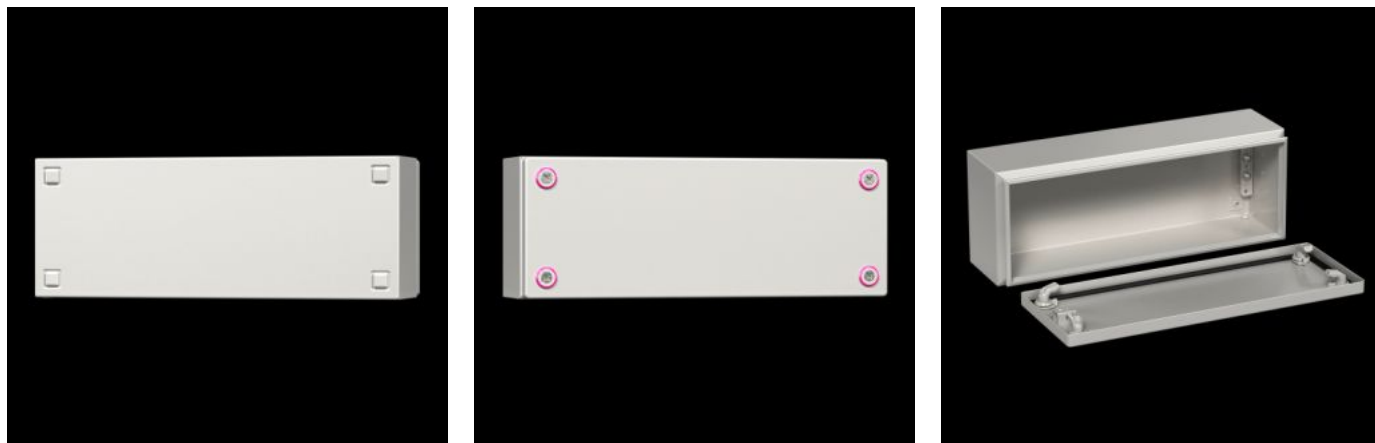
SOFTWARE & SERVICES

FRIEDHELM LOH GROUP



# KX 1508.000 - KX terminal box, carbon steel, without flange

The small enclosure KX, terminal box KX, without a gland plate allows for flexible interior installation while maintaining a high protection category.



## Features

|                                    |  |
|------------------------------------|--|
| Model No.                          | KX 1508.000  |
| Product description                | The small enclosure KX, terminal box KX, without a gland plate allows for flexible interior installation while maintaining a high protection category. |
| Material                           | Housing: Carbon steel<br>Cover: Carbon steel, all-round foamed-in PU seal  |
| Surface finish                     | Housing and cover: Dipcoat primed, powder-coated on the outside, textured paint  |
| Color                              | RAL 7035   |
| Supply includes                    | Housing with cover<br>Mini cam lock  |
| Protection category NEMA           | NEMA 1<br>NEMA 3R<br>NEMA 4<br>NEMA 12   |
| Protection category IP to EN 60529 | IP 66  |

# Features

|                                 |  |
|---------------------------------|--|
| Type rating according to UL 50E | Type 1<br>Type 3R<br>Type 4<br>Type 12   |
| IK code                         | IK08   |
| Dimensions                      | Width: 400 mm<br>Height: 300 mm<br>Depth: 120 mm<br>Width: 15.7 "<br>Height: 11.8 "<br>Depth: 4.72 "           |
| Material thickness - cover      | 1.25 mm<br>0.05 "  |
| Material thickness - enclosure  | 1.25 mm<br>0.05 "  |
| Base material                   | Carbon steel   |
| Packaging unit                  | 1 pc(s).   |
| Net weight                      | 4.696  |
| Gross weight                    | 4.701  |
| PCF per pack (cradle-to-gate)   | 21.4 kg CO2 eq (Cat B)   |
| Note on PCF category            | Category B: PCF value (cradle-to-gate) based on the product weight, approximately calculated and self-declared |
| Customs tariff number           | 84879090   |
| EAN                             | 4028177816220  |
| E-Number Sweden                 | E3465188   |
| ETIM 9                          | EC000261   |
| ETIM 8                          | EC000261   |
| ECLASS 8.0                      | 27180101   |

# Approvals

---

Approvals

Bureau Veritas  
DNV-GL  
Lloyds Register of Shipping  
UL + C-UL (listed)

---

Certificates

Protection category

---

Explanations

Manufacturer's declaration  
Declaration of conformity  
Declaration of conformity UK  
PCF-declaration