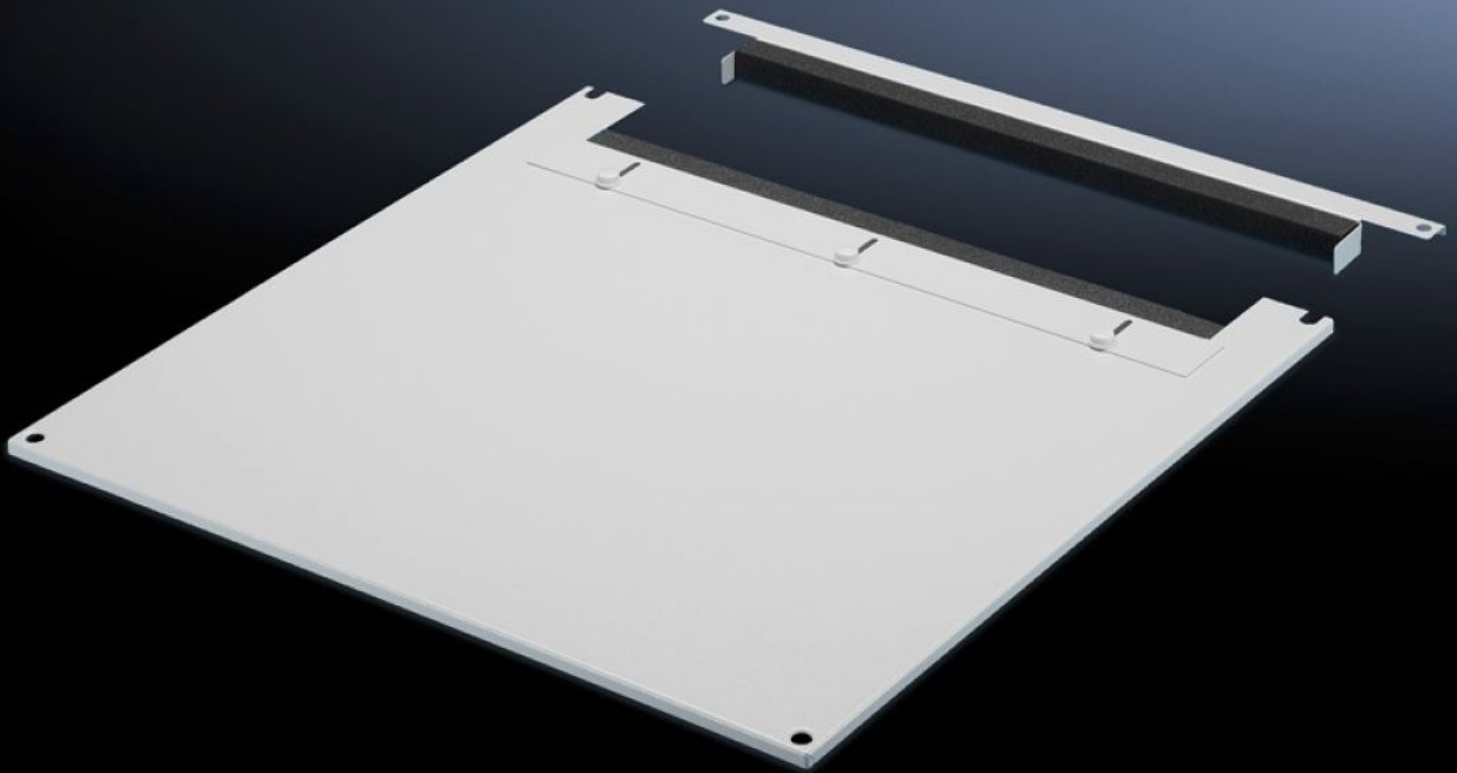


Rittal – The System.

Faster – better – everywhere.



TS 7826.825

Roof plate for cable entry, two-piece

State: 26/09/2024 (Source: rittal.com/uk-en)

ENCLOSURES

POWER DISTRIBUTION

CLIMATE CONTROL

IT INFRASTRUCTURE

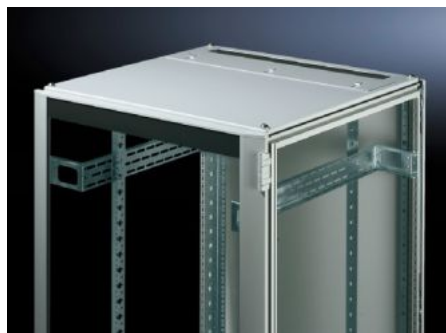
SOFTWARE & SERVICES

FRIEDHELM LOH GROUP



TS 7826.825 - Roof plate for cable entry, two-piece for VX, VX IT, TS, TS IT

The two-piece design allows easy retro-fitting, by simply removing the front part of the plate for retrospective cable entry.



Features

Model No.	TS 7826.825
Product description	In exchange for the standard roof. Equipped with a sliding angular bracket in the rear section. Rubber cable clamp strip on both sides for attaching cable bundles and bunched cables. Due to the symmetrical design of the frame, side cable entry can also be achieved by rotating the roof plate. The two-piece design allows convenient retrofitting.
Material	Sheet steel
Colour	RAL 7035
To fit	Width: 800 mm Depth: 1,200 mm
Packs of	1 pc(s).
Weight/pack	13.892 kg
Customs tariff number	94039910
EAN	4028177517813
ETIM 7.0	EC000744
ECLASS 8.0	27182405