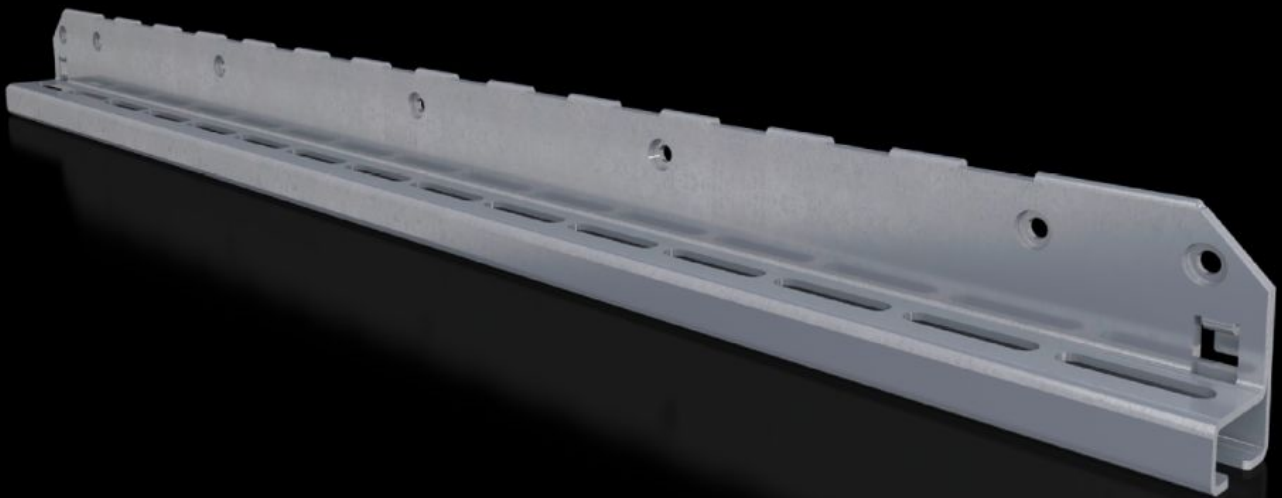


Rittal – The System.

Faster – better – everywhere.



SV 9683.328 Mounting bracket

State: 19/10/2024 (Source: rittal.com/uae-en)

ENCLOSURES

POWER DISTRIBUTION

CLIMATE CONTROL

IT INFRASTRUCTURE

SOFTWARE & SERVICES

FRIEDHELM LOH GROUP



SV 9683.328 - Mounting bracket for air circuit-breaker support rail

For attaching the air circuit-breaker support rail.

Features

Model No.	SV 9683.328
Product description	For attaching the air circuit-breaker support rail to the enclosure section or compartment side panel.
Material	Sheet steel, 2.5 mm
Surface finish	Zinc-plated
Supply includes	Assembly parts
To fit	Depth: = 800 mm
Packs of	2 pc(s).
Weight/pack	4.98 kg
Net weight	4.7
Gross weight	4.98
PCF/PU (cradle-to-gate)	19 kg CO2 eq (Cat B)
Note on the PCF class	Category B: PCF value (cradle-to-gate) approximated based on product weight and self-declared
Customs tariff number	73182900
EAN	4028177937505
ETIM 7.0	EC001900
ECLASS 8.0	27400613

Approvals

Approvals

Explanations

Declaration of conformity

Declaration of conformity UK