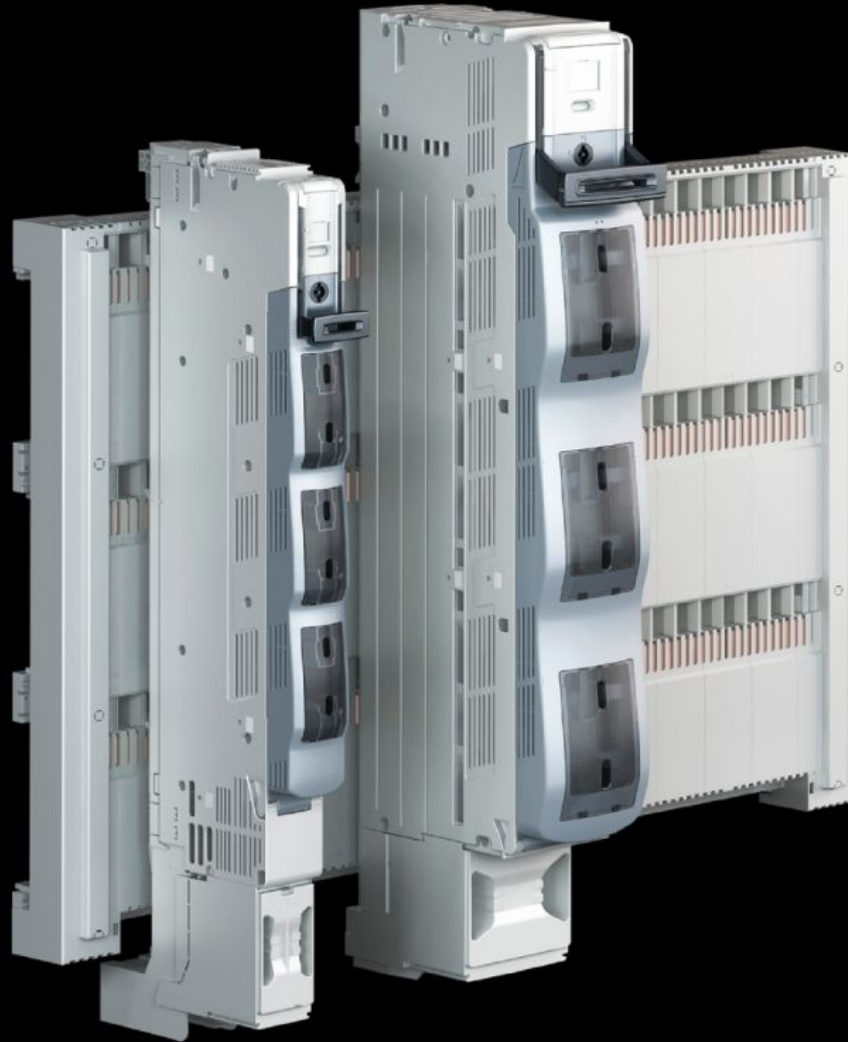


Rittal – The System.

Faster – better – everywhere.



SV 9677.165

NH slimline switch-disconnector

State: 19/10/2024 (Source: rittal.com/uae-en)

ENCLOSURES

POWER DISTRIBUTION

CLIMATE CONTROL

IT INFRASTRUCTURE

SOFTWARE & SERVICES

FRIEDHELM LOH GROUP



SV 9677.165 - NH slimline switch-disconnector

3-pole, for bar systems with 185 mm centre-to-centre spacing.

Features

Model No.	SV 9677.165
Design	3-pole, switchable
Function principle	Automatic quick-break contact allows operator-independent switching Double-break for reliable disconnection of the contacts
Material	Polyamide Fire protection corresponding to UL 94-V0 Contact tracks: Partially silver-plated hard copper
Colour	Chassis: RAL 7035 Cover: RAL 7001 Handle: RAL 7016
For NH size	1
For bar systems with centre-to-centre spacing	185 mm
Cable outlet	Top
Type of electrical connection	Screw M12
Installation type	Screw attachment
Number of poles	3-pole
Rated operating voltage	690 V, 3~
Rated operating current max.	250 A
Test specification	IEC/DIN EN 60 947-3 DIN EN 60 269-2 (fuse inserts)
Dimensions	Width: 100 mm Height: 772 mm
Connection for round conductor cross-sections	6 - 240 mm ²

Features

To fit busbars	Height: 10 mm
Packs of	1 pc(s).
Weight/pack	12.3 kg
Net weight	10.84
Gross weight	11.94
Copper weight (kg per piece)	2.868
Customs tariff number	85361090
EAN	4028177809062
ETIM 7.0	EC001040
ECLASS 8.0	27371401

Approvals

Explanations	Declaration of conformity Declaration of conformity UK
--------------	---