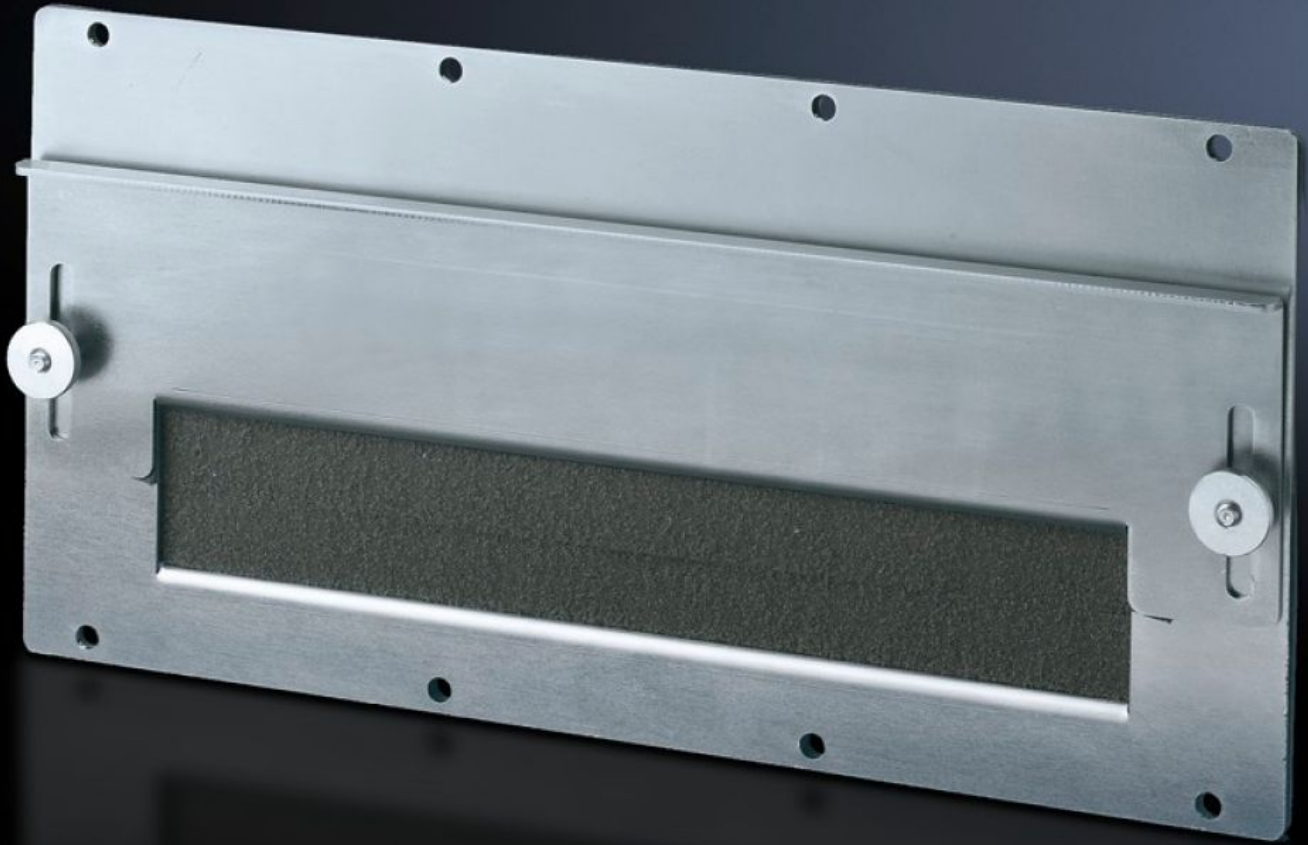


Rittal – The System.

Faster – better – everywhere.



SZ 8609.170 Module plates

State: 19/10/2024 (Source: rittal.com/uae-en)

ENCLOSURES

POWER DISTRIBUTION

CLIMATE CONTROL

IT INFRASTRUCTURE

SOFTWARE & SERVICES

FRIEDHELM LOH GROUP



SZ 8609.170 - Module plates for cable entry

For pre-assembled cable entry. Sealed, secure routing is achieved via adjustable angle brackets with inserted foam cable clamp strip. Fixed bracket, punched, for cable clamping.

Features

Model No.	SZ 8609.170
Design	for cable entry
Product description	For the entry of pre-assembled cables. Sealed, secure routing is achieved via adjustable angle brackets with inserted foam cable clamp strip. Fixed bracket, punched, for cable clamping.
Material	Sheet steel, 2 mm
Surface finish	Zinc-plated
Supply includes	Seal and assembly parts
Packs of	1 pc(s).
Weight/pack	1.5 kg
Net weight	1.4
Gross weight	1.491
PCF/PU (cradle-to-gate)	5.7 kg CO2 eq (Cat B)
Note on the PCF class	Category B: PCF value (cradle-to-gate) approximated based on product weight and self-declared
Customs tariff number	94039910
EAN	4028177211797
ETIM 7.0	EC000211
ECLASS 8.0	27142421