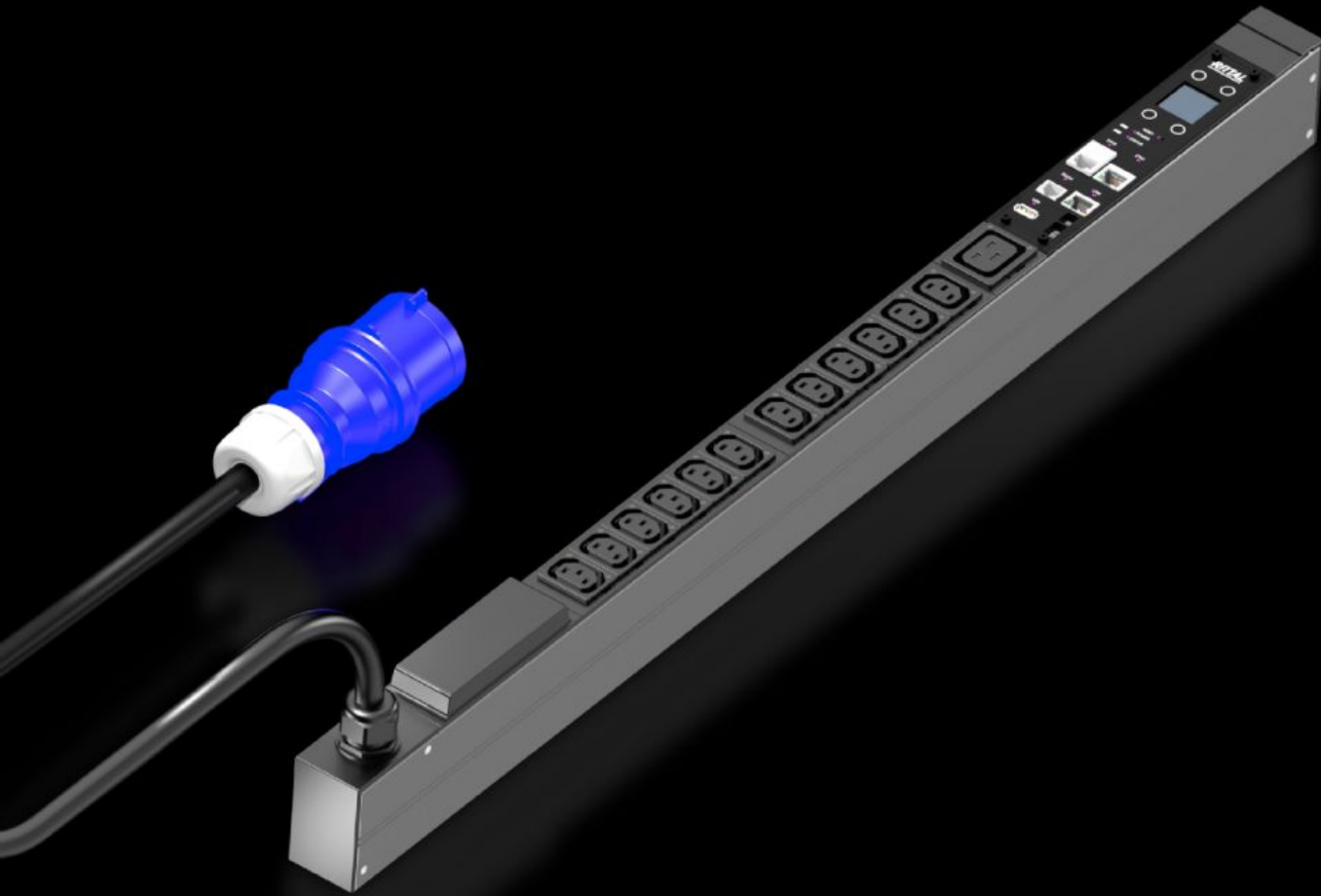


Rittal – The System.

Faster – better – everywhere.



DK 7979.310 PDU switched

State: 26/09/2024 (Source: rittal.com/uae-en)

ENCLOSURES

POWER DISTRIBUTION

CLIMATE CONTROL

IT INFRASTRUCTURE

SOFTWARE & SERVICES

FRIEDHELM LOH GROUP



DK 7979.310 - PDU switched

High-end IT rack power distribution: Smart PDU with measurement function per phase and individually switchable output slots.



Features

Model No.	DK 7979.310
Product description	High-end power distribution in a compact design for IT network and server racks. With switching function and power measurement at the infeed or per phase.
Benefits	<p>For vertical mounting, it may be attached in the zero-U space of the Rittal VX IT or TS IT rack with no need for tools</p> <p>Colour coding of phases and fuse circuits (L1=pink, L2=black, L3=white)</p> <p>Tool-free divider kit for VX IT</p> <p>PDU self-supplied, no external power supply required</p> <p>Measurement accuracy $\pm 1\%$ (kWh) to EN 62 053-21</p> <p>Programmable startup behaviour following voltage recovery (on/off/last status)</p> <p>Programmable switching behaviour (time/programmable logic)</p> <p>Integral real-time clock with battery buffering (max. 10 years, battery replaceable)</p> <p>Integral electromagnetic buzzer for acoustic alarms</p> <p>Adjustable limit values (warning/alarm) for voltage, current, output</p> <p>Operating hours meter, total and cyclical, resettable</p>

Features

Technical specifications

Display/controller unit in the PDU enclosure rotatable through 180° and replaceable
Integral, fully-redundant power pack, power supply from all phases
Error-tolerant PDU power supply redundant across all phases
Voltage V, current A, frequency Hz
Active power, active energy, apparent power, apparent energy
Power factor (cosPhi) and phase angle
Zero conductor current measurement/load imbalance detection
Fuse monitoring for PDUs with integral fuse
Monitoring of the optionally available overvoltage protection
Bright TFT display, 128 x 128 pixels (RGB) with back-lighting and energy-saving mode to display output data and basic PDU configuration
Position sensors for display rotation and correct PDU representation on the website
Multi-colour LEDs (green/amber/red) to indicate switching states and warning/alarm limits per phase or infeed
Power LED to indicate voltage
Power-saving design, minimal intrinsic power consumption

Material

Aluminium section, black anodised
Slots: Plastic

Supply includes

Assembly parts

Options

Type 3 overvoltage protection with interchangeable arresters while operational, with status monitoring, suitable for integration into PDU enclosure
Residual current measurement (type B) per infeed/phase/fuse
Monitoring of the optionally available overvoltage protection
CMC III CAN bus sensors may be connected for ambient monitoring, max. 16 sensors
Other enclosure colours are available

Features

Measurement functions, description	Emergency power supply to PDU web server via PoE, sequential disconnection of the outputs Switching function per output slot Avoids overload peaks: Sequential activation of the outputs following voltage recovery Relay states are saved even in the event of a power failure Bistable relays: Low current consumption and high switching capacity, also suitable for higher starting currents up to max. 300 A Grouping: Joint switching of multiple outputs Measurement per phase or infeed Powerful CPU (ARM Cortex A8) Digital input (floating contact) Additional alarm output/relay output (changeover contact) Additional alarm output/relay output (changeover contact)
Dimensions	Width: 44 mm Depth: 70 mm Length: 845 mm
No. of sockets and type	12 x C13 / 1 x C19
Rated operating voltage	230 V (AC)
Rated current (max.)	16 A
Power consumption	3.7 kW
Infeeds	Qty.: 1 Phases per infeed: 1~
Length of connection cable	3 m
Type of electrical connection	CEE
Interfaces	Fully redundant Ethernet interface 10/100/1000 Mbit/s (2x RJ45, 1x with PoE) USB 2.0 port (USB-A) for mass configuration, firmware updates & data logging CAN bus interface (RJ 45) for a maximum of 16 ambient sensors Serial interface RS232 (RJ12) for LTE unit, scripting, CLI Use of own certificates/TLS 1.2 E-mail forwarding in case of alarm (SMTP) User administration including rights management LDAP(S)/Radius/Active Directory connection Syslog server connection (max. 2 servers)

Features

Directives	EMC Directive 2014/30/EU Low Voltage Directive 2014/35/EU
Standards	EN 62368-1 EN 61000-3 EN 61000-4 EN 61000-6 EN 62053-21
Protocols	Web server (HTTP, HTTPS, SSL) SSH, Telnet, NTP TCP/IP v4 & v6, DHCP, DNS SNMP v1, v2c & v3, Modbus/TCP, OPC-UA MIB for linking into 3rd party DCIM software FTP/SFTP (update/file transfer)
Operating temperature range	5 °C...50 °C
Ambient humidity (non-condensing)	10...95 %
Storage temperature range	-20 °C...70 °C
To fit	Enclosure type: VX IT enclosure frame: ≥ 1,200 mm Enclosure type: VX IT 19" mounting angles: ≥ 1,200 mm
Packs of	1 pc(s).
Weight/pack	3.56 kg
Net weight	3.36
Gross weight	3.56
Customs tariff number	85366990
EAN	4028177947856
E-Number Sweden	E8407051
ETIM 8	EC002762
ETIM 7.0	EC000330
ECLASS 8.0	27142604

Approvals

Approvals

TÜV

Explanations

Declaration of conformity

Tender text

Compact power distributor for deployment in IT server and network enclosures. Vertical installation in the Zero-U space using the supplied universal brackets for common IT racks. Suitable for tool-free quick assembly in the Rittal VX IT and TS IT racks using the special supplied plug-%-play fastener. Robust aluminium housing with permanently mounted output slots, IEC 60320/C13 or IEC 60320/C19 as well as CEE 7/3 (earthing-pin) and BS 1363 (UK), depending on the type (see below for details). The IEC C13 / C19 output slots can be protected with a lock against unintentional removal of the connectors. Unused slots can be closed with slot covers available as accessories. This precludes an unintentional overloading of individual phases and circuits. The fuse circuits and phases are colour-coded for multiphase PDU variants. A fixed-mounted connection cable with IEC C20 or CEE connector appropriate for the variant makes the PDU available for immediate deployment.

The PDU switched has extensive measurement functions for the current and power monitoring of each phase. And switching functions for each output slot. The integral TFT colour display enables the basic configuration setting and quick access of the electrical consumption data. Two Gigabit network interfaces and the integrated Web server allow access and data transmission using various protocols. The consumption parameters can be forwarded to a DCIM software via SNMP, OPC-UA, Modbus/TCP. For monitoring the ambient parameters, up to 16 sensors (for example temperature / humidity / smoke / leakage / access) as well as VX IT and TS IT handle systems from the CMC accessories program can be connected to the CAN sensor interface.

Optionally, an overvoltage protection module (type3) can be placed on the PDU at the infeed; the overvoltage protection module is equipped with arrestors that can be replaced during operation. For intelligent PDUs, the status is monitored via the network interface, the PDU

basic has a floating alarm contact for monitoring the overvoltage protection. As option, intelligent PDU variants can be supplied with an AC/DC sensitive residual current measurement (RCM type B) with up to 6 measurement points. This changes the PDU length and the number of installed slots for each standard length. The warranty for proper operation is 24 months.

Technical specifications switched

Input voltage range (L/N/PE): 230 VAC, 50-60Hz
input current: 16A
No. of phases: 1
Marking of phases (3-phase PDUs only: L1, L2, L3):
Rittal Power Pink, black, white
Number of slots type IEC 60320/C13 (total): 12
Number of slots type IEC 60320/C13
(per phase/fuse): 12
Number of slots type IEC 60320/C19 (total): 1
Number of slots type IEC 60320/C19
(per phase/fuse): 1
Number of slots type CEE 7/3 (total): -
Number of slots type CEE 7/3
(per phase/fuse): -
No. of circuit breakers: -
Hydraulic-magnetic protective circuit-breaker: 16 A
Slots individually switchable: Yes
Connector PDU input:
EN 60309 / CEE (L+N+PE, 6h)
Length of connection cable: 3m
Connection cable type: H05-VV
No. of wires: 3
Cable cross-section: 2,5mm²
PDU housing width: 44mm
PDU housing depth: 70mm
PDU housing height: 845mm
PDU material: Aluminium, anodised, in RAL 9005 (black)<(>,<)>
other colours available on request
PDU mounting adaptor (VX IT / TS IT) –Mounting options:
Frame + Zero-U space + cable route
Measurement functions: Measurement per phase or infeed
Values recorded (per phase): Voltage (V), current (A)<(>,<)>
frequency (Hz), Active power (kW), active energy (kWh)
apparent power (kVA), power factor

THD (voltage and current) for 3 phases<(>,<)>
Crest factor for single-phase
Neutral conductor current measurement
fuse monitoring (at 32 A)
Optional: Residual current monitoring (RCM)
AC + DC (RCM Typ B)
max. 6 measurement points per PDU possible
(input / per phase / per fuse)
0 mA – 100 mA je RCM
Voltage measuring range: 90V - 255V
Voltage resolution 0.1V
Current measuring range 0 - 16A/32A
Current resolution 0.1A
Measuring accuracy typ. $\pm 1\%$ according to IEC/EN 62 053-21
Freely adjustable limit values (warning/alarm) for
for voltage, current, power: Yes
Operating hours counter: Yes
Controllerboard: can be rotated
and replaced during operation
Display: TFT, RGB 128x128 pixels
Network interface: 2x RJ45, per 10/100/1000 MBit/s
Supported protocols:
IPv4 / IPv6, integral web server
HTTP, HTTPS, SSL, SSH, NTP, Telnet
TCP/IP v4 and v6, DHCP, DNS, NTP, Syslog
SNMP v1, v2c und v3, Traps,
FTP/SFTP (update/file transfer)
OPC-UA, Modbus/TCP<(>,<)>
FTP/SFTP (update/file transfer)<(>,<)>
E-mail forwarding (SMTP)
User administration including rights management: Yes
LDAP(S)/Radius/Active Directory connection: Yes
USB port for firmware update+data logging functions: Yes
Initial commissioning / mass configuration:
yes, with predefined CSV file
CAN bus interface: RJ45<(>,<)>
for connecting 16 sensors
CAN sensor types: Temperature<(>,<)>
temperature/humidity (combined), infrared access sensor
leakage, ariflow, EFD, NH measurement module, smoke alarm
vandalism, differential pressure<(>,<)>
VX IT / TS IT handle system

Plug & play drivers - Rittal RiZone DCIM software: Yes

Digital input: 1

Alarm relay: 48 V DC/2 A

Serial interface: RS232 (e.g. for LTE unit 7030.571)

Conformity: CE

Standards:

Safety: EN 62368

EMV:

EN 55022 / B

EN 61000-4-2

EN 61000-4-3

EN 61000-6-2

EN 61000-6-3

Safety Directive: 2014/35/EU

EMC Directive: 2014/30/EU

MTBF (at 40°C) 100.000 hours

Protection category: IP20 (EN 60529)

Protection class: Class 1

Pollution degree: 2

Overvoltage category: II

Environmental properties: 2011/65/EU (RoHS 2), WEEE

Storage temperature: -20°C to +70°C

Ambient temperature: +5°C to +50°C

Ambient humidity: 10-95% rel. humidity, non-condensing

Connector lock for C14 and C20 connectors: 1x
(further connector locks optional - DK 7979.020)

Covers C13 (optional accessory): DK 7955.010

Covers C19 (optional accessory): DK 7955.015

Warranty: 24 months

Type: Rittal PDU switched Model No.: DK 7979.310