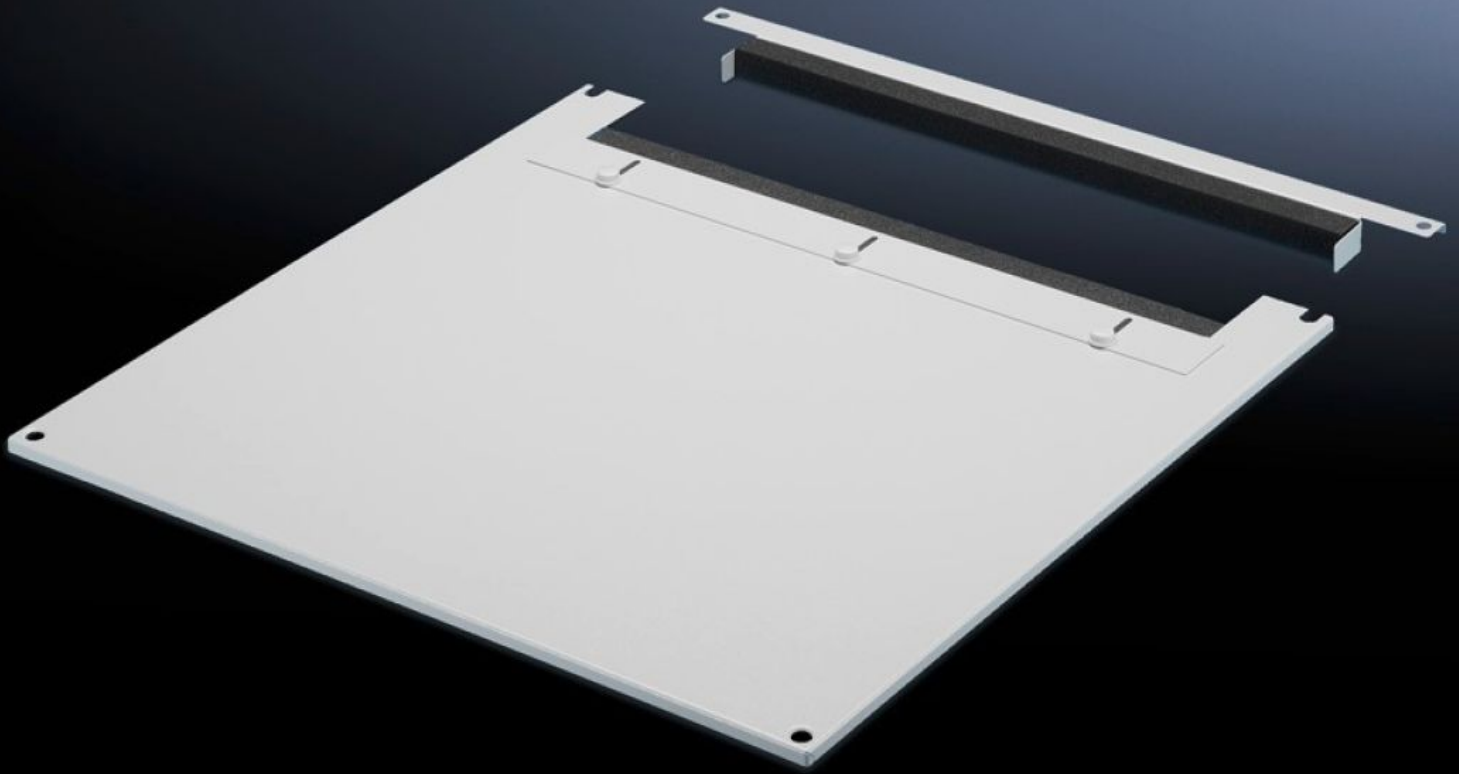


**Rittal – The System.**

Faster – better – everywhere.



**TS 7826.885**

**Roof plate for cable entry, two-piece**

State: 27/09/2024 (Source: [rittal.com/uae-en](http://rittal.com/uae-en))

ENCLOSURES

POWER DISTRIBUTION

CLIMATE CONTROL

IT INFRASTRUCTURE

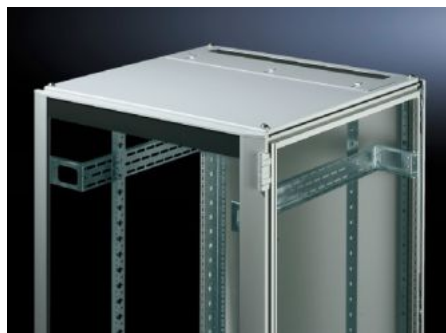
SOFTWARE & SERVICES

FRIEDHELM LOH GROUP



# TS 7826.885 - Roof plate for cable entry, two-piece for VX, VX IT, TS, TS IT

The two-piece design allows easy retro-fitting, by simply removing the front part of the plate for retrospective cable entry.



## Features

Model No.	TS 7826.885
Product description	In exchange for the standard roof. Equipped with a sliding angular bracket in the rear section. Rubber cable clamp strip on both sides for attaching cable bundles and bunched cables. Due to the symmetrical design of the frame, side cable entry can also be achieved by rotating the roof plate. The two-piece design allows convenient retrofitting.
Material	Sheet steel
Colour	RAL 7035
To fit	Width: 800 mm Depth: 800 mm
Packs of	1 pc(s).
Weight/pack	9.492 kg
Net weight	9.017
Gross weight	9.492
Customs tariff number	94039910
EAN	4028177345362
E-Number Sweden	E7239742

# Features

---

ETIM 7.0	EC000744
ECLASS 8.0	27182405

---

## Tender text

Roof plate for cable entry for TS, TS IT  
for WxD 800x800 mm, two-piece

Material: Sheet steel, spray finished in RAL 7035  
Dimensions (W x H x D): 800 mm x 0 mm x 800 mm