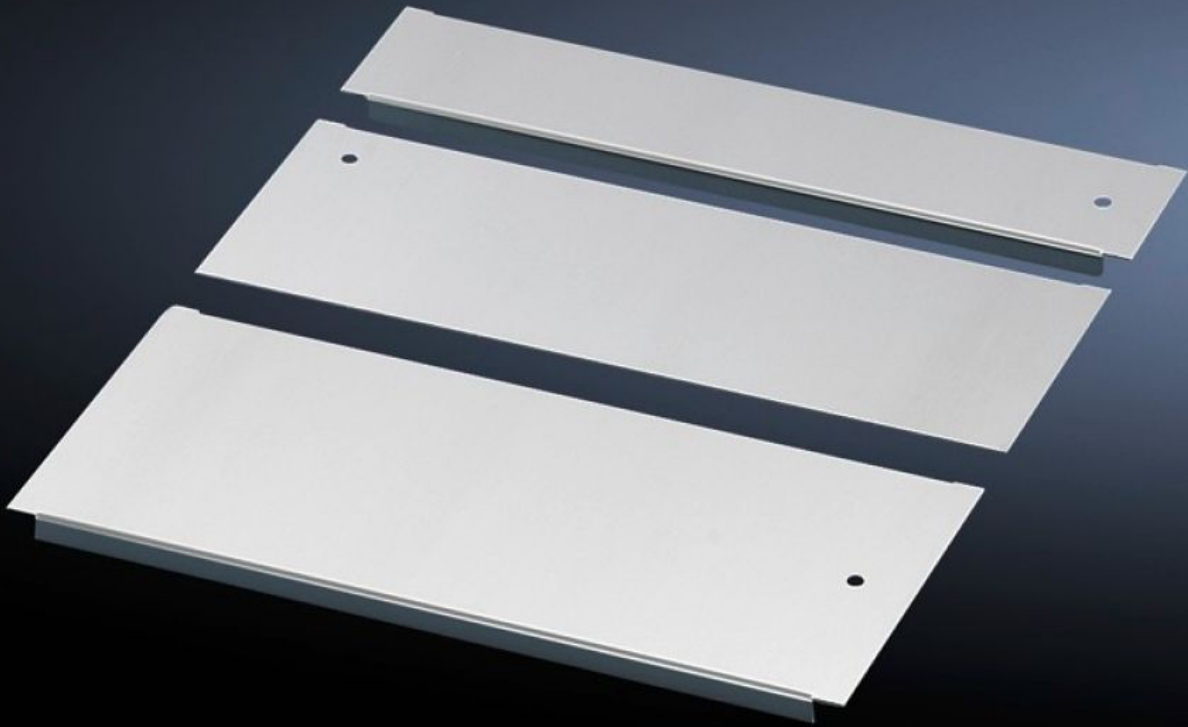
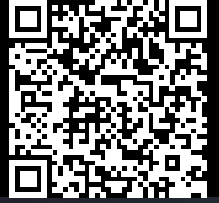


**Rittal – The System.**

Faster – better – everywhere.



# CM 5001.219

## Gland plate

State: 26/09/2024 (Source: [rittal.com/uae-en](http://rittal.com/uae-en))

ENCLOSURES

POWER DISTRIBUTION

CLIMATE CONTROL

IT INFRASTRUCTURE

SOFTWARE & SERVICES

FRIEDHELM LOH GROUP



# CM 5001.219 - Gland plate for TP

Potential equalisation is provided via assembly components and earthing points.

## Features

Model No.	CM 5001.219
Product description	Potential equalisation is provided via assembly components and earthing points.
Material	Sheet steel
Surface finish	Zinc-plated
Supply includes	Assembly parts
Note	For greater stability and universal cable entry, the base opening is divided in the width for 1000, 1200 and 1600 mm wide enclosures, and is suitable for various configurations. Several gland module plates need to be combined to close off the base completely in the TS-IT
Dimensions	Depth: 150 mm
To fit	Enclosure type: TS IT TS CM TP Width: = 800 mm
Packs of	1 pc(s).
Weight/pack	1.58 kg
Net weight	1.28
Gross weight	1.46
Customs tariff number	73269098
EAN	4028177523234
E-Number Sweden	E3404479
ETIM 8	EC002620
ETIM 7.0	EC002620

# Features

---

ECLASS 8.0

27189261