

# Rittal – The System.

Faster – better – everywhere.



## SV 3525.010

## PLS special busbars E-Cu

State: 27/09/2024 (Source: [rittal.com/uae-en](http://rittal.com/uae-en))

ENCLOSURES

POWER DISTRIBUTION

CLIMATE CONTROL

IT INFRASTRUCTURE

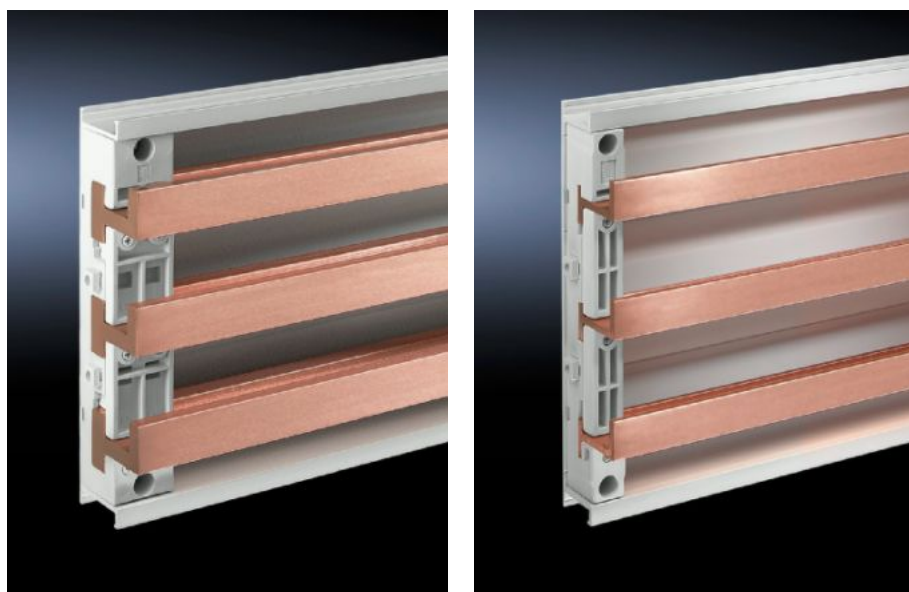
SOFTWARE & SERVICES

FRIEDHELM LOH GROUP



# SV 3525.010 - PLS special busbars E-Cu

Lengths range from 495 mm to 2400 mm.



## Features

Model No.	SV 3525.010
Material	E-Cu
Bar thickness	5 mm
Cross-section	300 mm <sup>2</sup>
Length	895 mm
Note	May be cut individually to required length
Busbar type	Busbar E-Cu
To fit busbar system	PLS 800
Dimensions	Length: 895 mm
To fit	Width: = 1,000 mm
Packs of	3 pc(s).
Weight/pack	6.96 kg
Net weight	6.57
Gross weight	6.88

# Features

---

Copper weight (kg per piece)	2.32
Customs tariff number	74071000
EAN	4028177504004
ETIM 8	EC001522
ETIM 7.0	EC001522
ECLASS 8.0	27370303

---

# Approvals

---

Approvals	UL + C-UL (listed)
Explanations	Declaration of conformity Declaration of conformity UK

---

# Tender text

PLS 800 special busbars  
PLS 800 special busbars E-Cu  
Technical specifications  
Length: 895 mm  
Bar thickness: 5 mm  
Cross section: 300 qmm  
Weight: 2.67 Kg/m  
Electrical parameters  
IEC: to 800 A  
UL 508: 700 A  
System:  
Rittal RiLine60