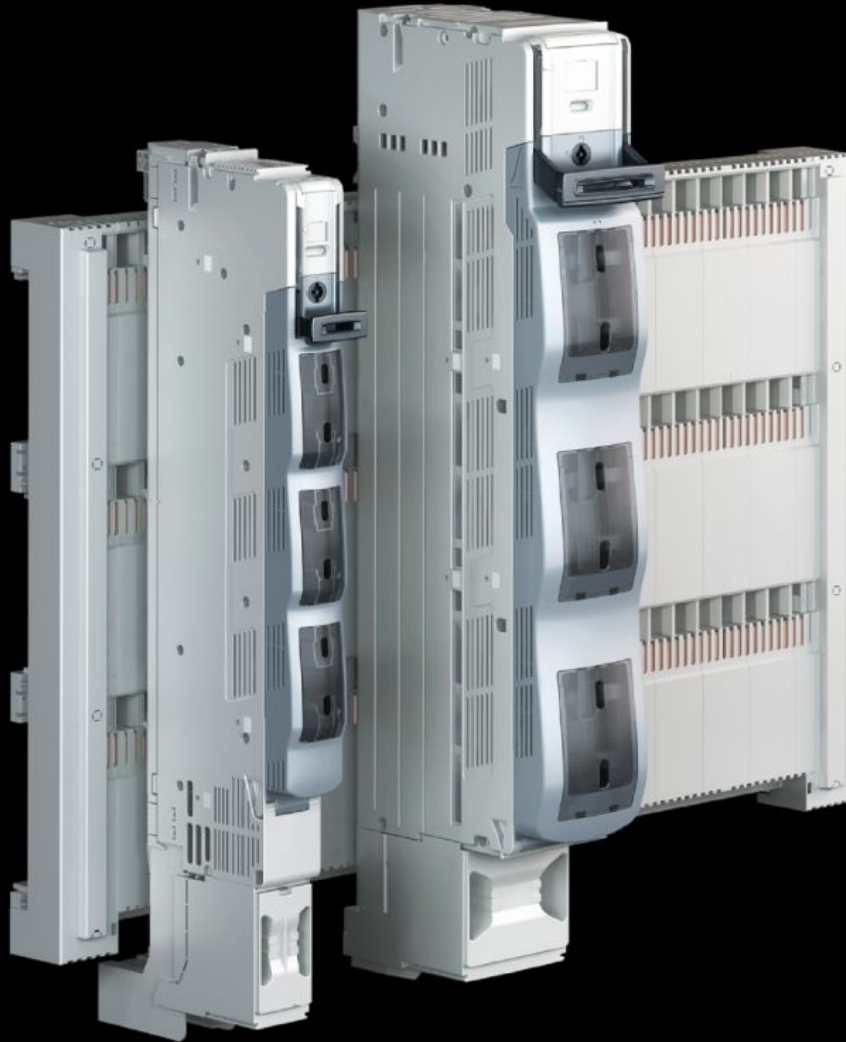


**Rittal – The System.**

Faster – better – everywhere.



**SV 9677.080**

**NH slimline switch-disconnector**

State: 27.9.2024 (Source: [rittal.com/si-sl](https://www.rittal.com/si-sl))

ENCLOSURES

POWER DISTRIBUTION

CLIMATE CONTROL

IT INFRASTRUCTURE

SOFTWARE & SERVICES

FRIEDHELM LOH GROUP



# SV 9677.080 - NH slimline switch-disconnector with electronic fuse monitoring

3-pole, for bar systems with 185 mm centre-to-centre spacing.

## Features

Model No.	SV 9677.080
Design	3-pole, switchable
Function principle	Automatic quick-break contact allows operator-independent switching Double-break for reliable disconnection of the contacts
Material	Polyamide Fire protection corresponding to UL 94-V0 Contact tracks: Partially silver-plated hard copper
Colour	Chassis: RAL 7035 Cover: RAL 7001 Handle: RAL 7016
For NH size	00
For bar systems with centre-to-centre spacing	185 mm
Cable outlet	Bottom
Type of electrical connection	Screw M8
Installation type	Clamping attachment
Number of poles	3-pole
Rated operating voltage	400 V, 3~
Rated operating current max.	160 A
Test specification	IEC/DIN EN 60 947-3 DIN EN 60 269-2 (fuse inserts)
For converter installation	Yes

# Features

---

Dimensions	Width: 50 mm Height: 860 mm
Connection for round conductor cross-sections	1.5 - 95 mm <sup>2</sup>
To fit busbars	Height: 10 mm
Packs of	1 pc(s).
Weight/pack	5,48 kg
Net weight	5
Gross weight	5.48
Copper weight (kg per piece)	1.072
Customs tariff number	85043129
EAN	4028177806726
ETIM 7.0	EC001040
ECLASS 8.0	27371401

# Approvals

---

Explanations	Declaration of conformity Declaration of conformity UK
--------------	---