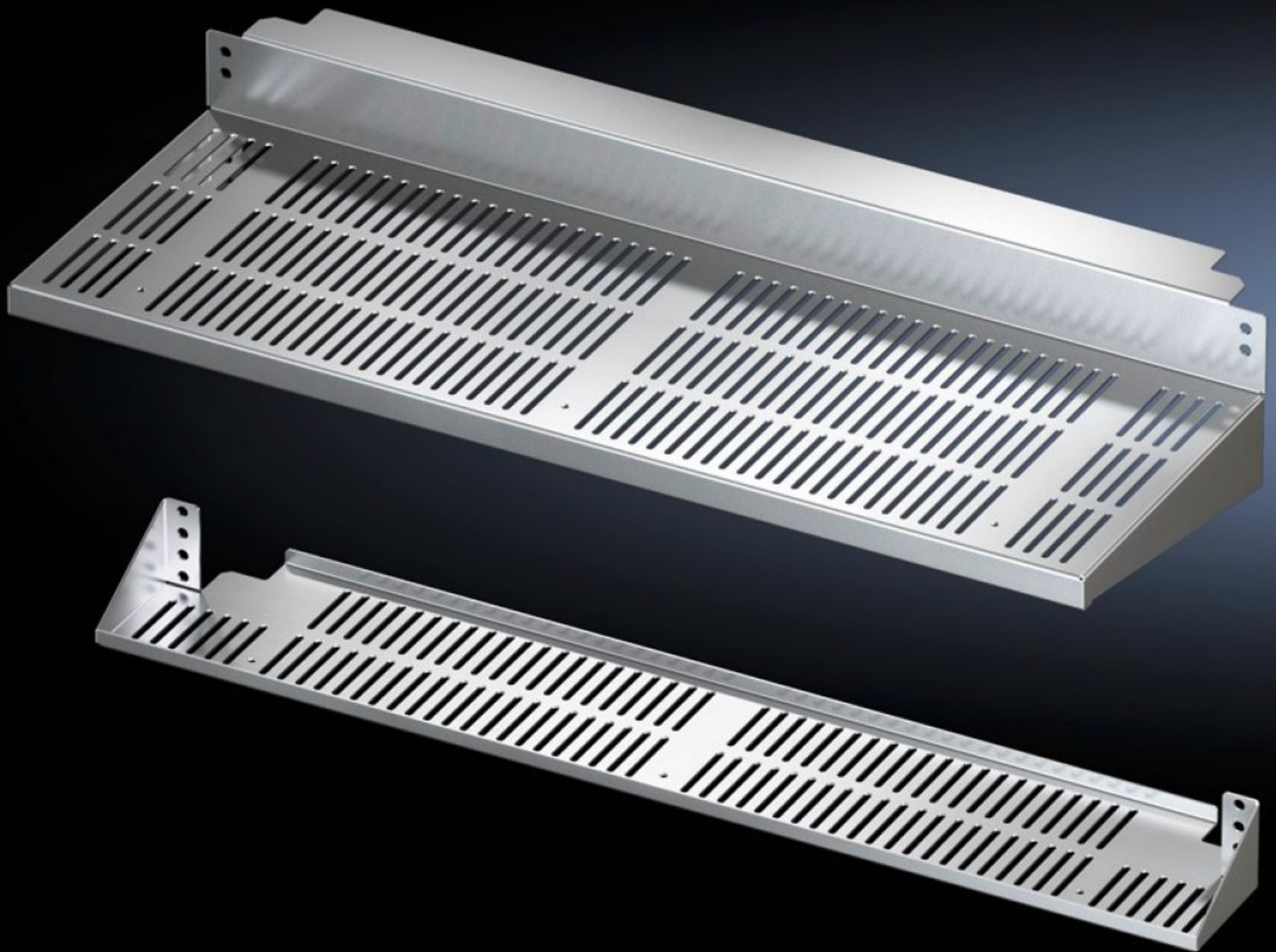


Rittal – The System.

Faster – better – everywhere.



SV 9674.920

**Contact hazard protection cover
plate**

State: 27.9.2024 (Source: [rittal.com/si-sl](https://www.rittal.com/si-sl))

ENCLOSURES

POWER DISTRIBUTION

CLIMATE CONTROL

IT INFRASTRUCTURE

SOFTWARE & SERVICES

FRIEDHELM LOH GROUP



SV 9674.920 - Contact hazard protection cover plate for enclosures with NH slimline fuse-switch disconnectors

To cover outgoing sections with NH slimline fuse-switch disconnectors so that they are safe from finger contact.

Features

Model No.	SV 9674.920
Product description	To cover outgoing sections with NH slimline fuse-switch disconnectors and Maxi-PLS/Flat-PLS busbar system in the rear enclosure section so that they are safe from finger contact (IP 2X).
Material	Sheet steel, 1.5 mm
Surface finish	Zinc-plated
Supply includes	Cover set, two-piece (top) Cover set, two-piece (bottom) Assembly parts
Usable width for Maxi-PLS	1.100 mm
Usable width for Flat-PLS	900 mm
Note	The specified installation width when using Maxi-PLS only applies in conjunction with top-mountable busbar supports 9649.160/9659.160.
To fit	Enclosure type: TS Width: = 1,200 mm
Packs of	1 pc(s).
Weight/pack	9 kg
Net weight	8.8
Gross weight	9
Customs tariff number	73269098
EAN	4028177701564
ETIM 7.0	EC001638

Features

ECLASS 8.0

27142116