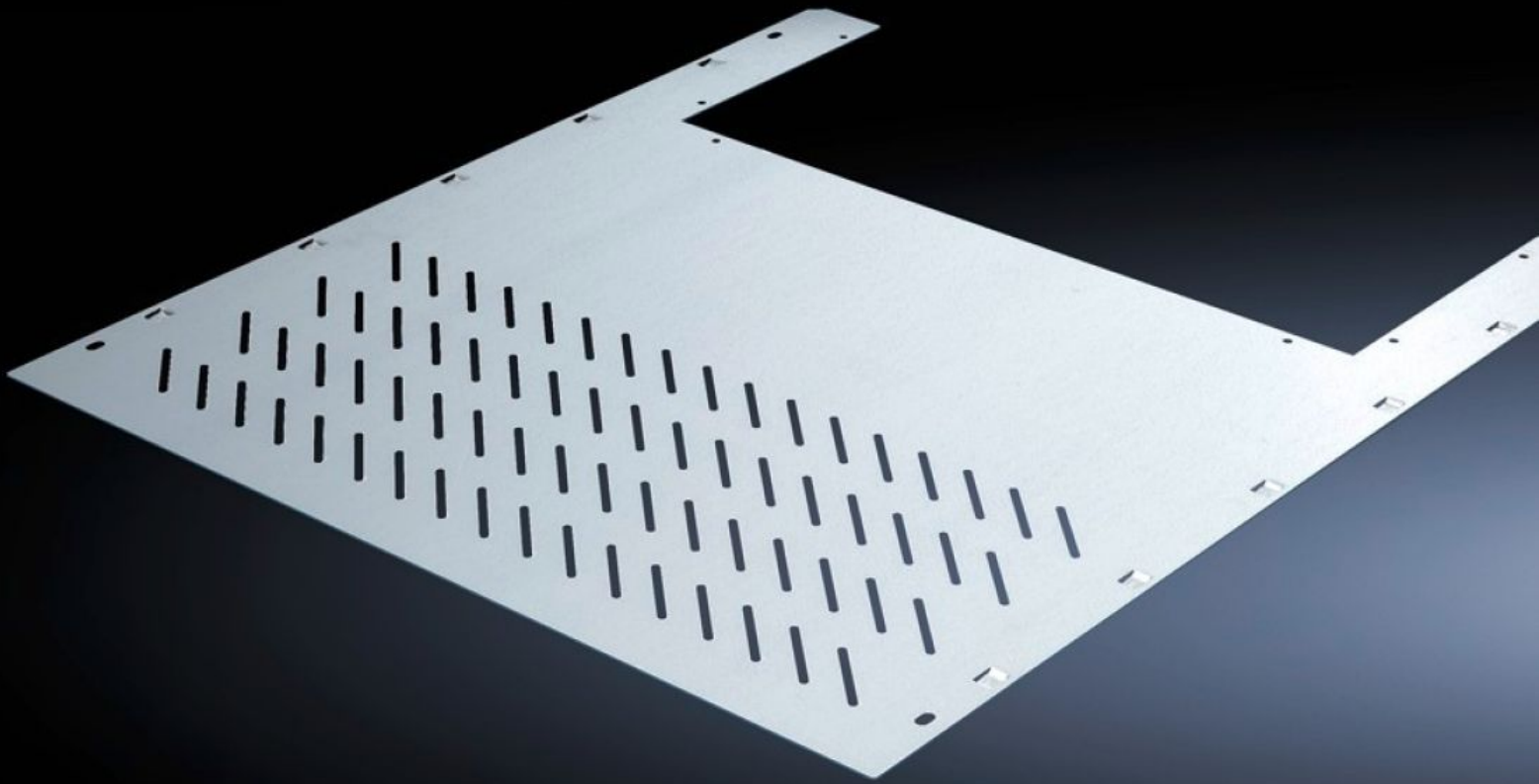


Rittal – The System.

Faster – better – everywhere.



SV 9673.438

Compartment divider

State: 26.9.2024 (Source: [rittal.com/si-sl](https://www.rittal.com/si-sl))

ENCLOSURES

POWER DISTRIBUTION

CLIMATE CONTROL

IT INFRASTRUCTURE

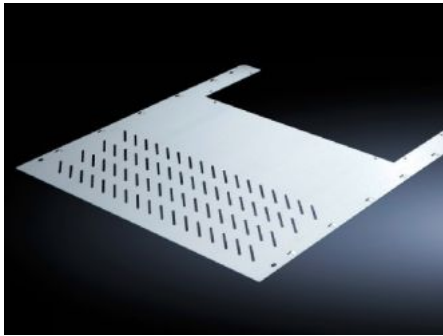
SOFTWARE & SERVICES

FRIEDHELM LOH GROUP



SV 9673.438 - Compartment divider with duct for vertical busbar systems

For the horizontal separation of compartments with vertical busbars.



Features

| | |
|-----------------------|---|
| Model No. | SV 9673.438 |
| Design | With louvres |
| Product description | For the horizontal separation of compartments with vertical busbars. In combination with the side panel modules, this creates Form separation in accordance with Form 3 or 4. |
| Material | Sheet steel, 1.25 mm |
| Surface finish | Zinc-plated |
| Mounting cut-out | Width:212 mm Depth:201 mm |
| For compartment depth | 800 mm |
| Assembly instruction | 2 mounting brackets are required to install each compartment divider. |
| Dimensions | Width: 306 mm Depth: 788 mm |
| To fit | Width: = 400 mm |
| Packs of | 4 pc(s). |
| Weight/pack | 16,864 kg |
| Net weight | 7.5 |

Features

| | |
|-----------------------|---------------|
| Customs tariff number | 73269098 |
| EAN | 4028177570900 |
| ETIM 7.0 | EC002525 |
| ECLASS 8.0 | 27400613 |
