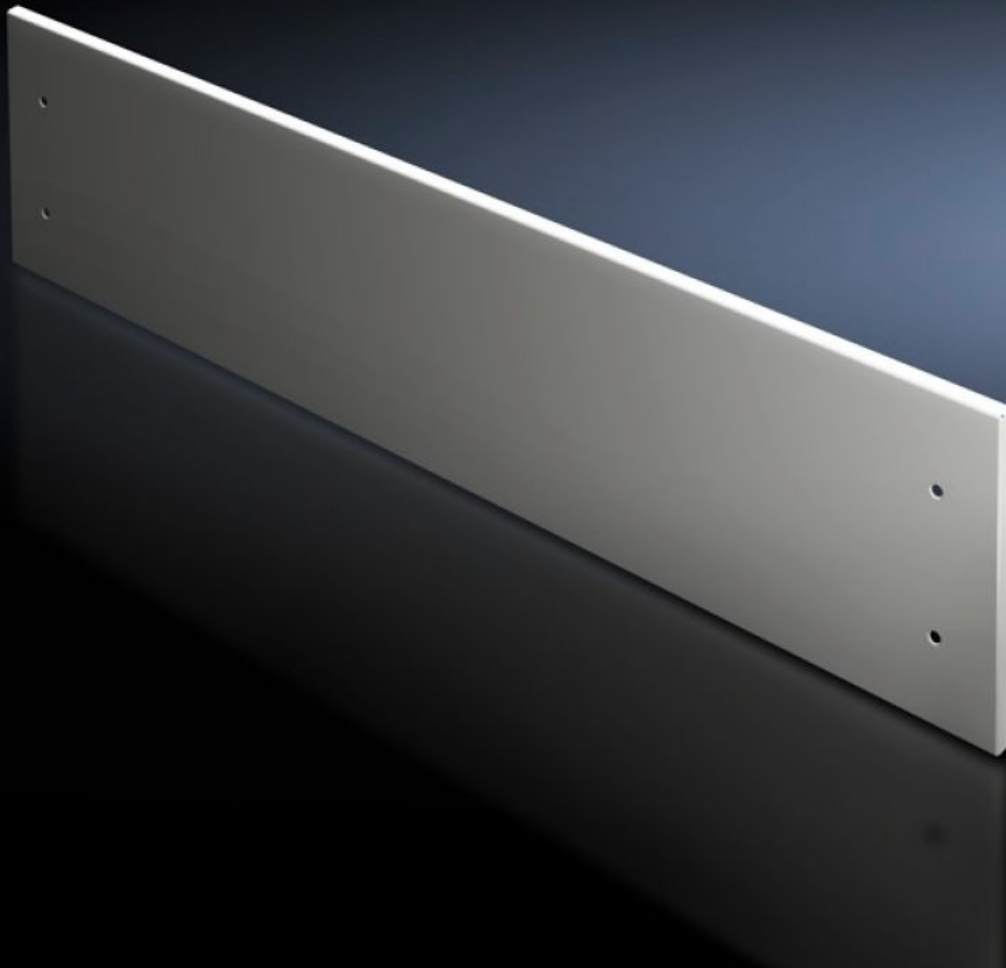


Rittal – The System.

Faster – better – everywhere.



SV 9672.324

Front trim panel, top

State: 27.9.2024 (Source: [rittal.com/si-sl](https://www.rittal.com/si-sl))

ENCLOSURES

POWER DISTRIBUTION

CLIMATE CONTROL

IT INFRASTRUCTURE

SOFTWARE & SERVICES

FRIEDHELM LOH GROUP



SV 9672.324 - Front trim panel, top for TS

To finish off at the top when using partial doors.

Features

Model No.	SV 9672.324
Product description	To finish off the modular front design at the top when using partial doors. The front trim panels may be removed from the outside by unscrewing. The cross member required for mounting is included with the supply of the mounted partial doors.
Material	Sheet steel, 2 mm
Surface finish	Textured paint
Colour	RAL 7035
Supply includes	Assembly parts
Height front panel top	300 mm
To fit	Width: = 400 mm
Packs of	1 pc(s).
Weight/pack	2,586 kg
Net weight	2.357
Gross weight	2.557
Customs tariff number	94039910
EAN	4028177697362
ETIM 7.0	EC000456
ECLASS 8.0	27142423