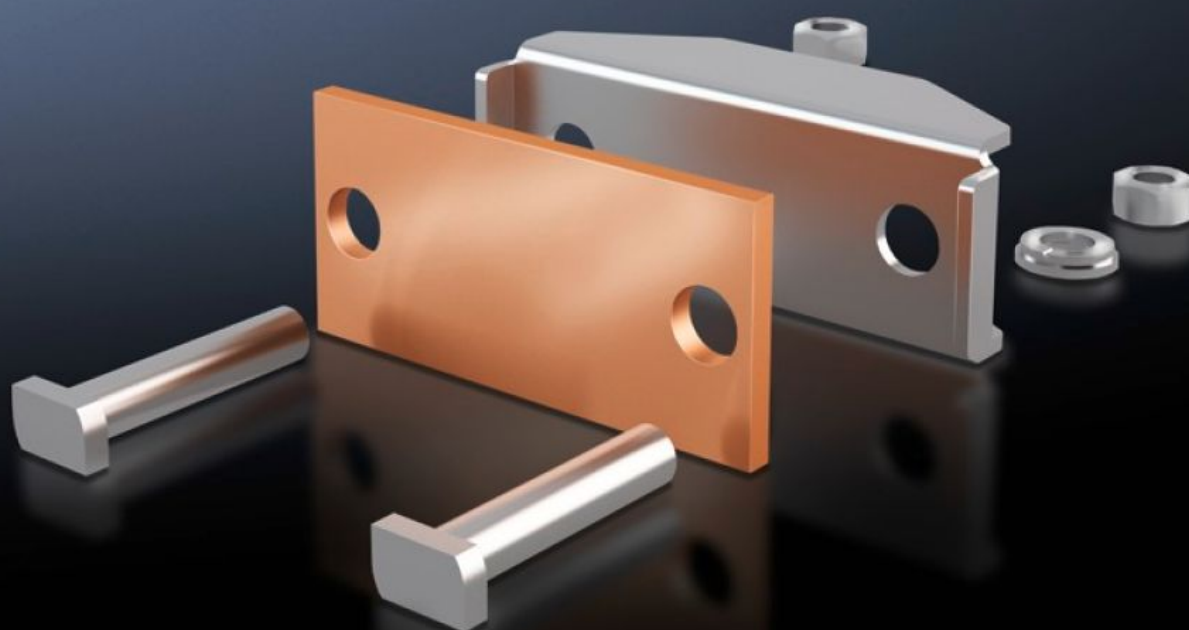


# Rittal – The System.

Faster – better – everywhere.



## SV 9650.330 Connection plate

State: 26.9.2024 (Source: [rittal.com/si-sl](https://www.rittal.com/si-sl))

ENCLOSURES

POWER DISTRIBUTION

CLIMATE CONTROL

IT INFRASTRUCTURE

SOFTWARE & SERVICES

FRIEDHELM LOH GROUP



# SV 9650.330 - Connection plate for laminated copper bars

For the connection of laminated flat copper bars.

## Features

Model No.	SV 9650.330
Product description	For the connection of laminated flat copper bars.
Material	Connection plate: E-Cu Thrust piece: Stainless steel
Supply includes	Assembly parts
To fit busbars	Maxi-PLS 60
Clamping area for laminated copper bars (W x H)	32 x 20 mm
Packs of	3 pc(s).
Weight/pack	1,236 kg
Net weight	1.029
Gross weight	1.237
Copper weight (kg per piece)	0.13
Customs tariff number	85369010
EAN	4028177239517
ETIM 7.0	EC002498
ECLASS 8.0	27379201

## Approvals

Approvals	UL + C-UL (listed)
Explanations	Declaration of conformity Declaration of conformity UK