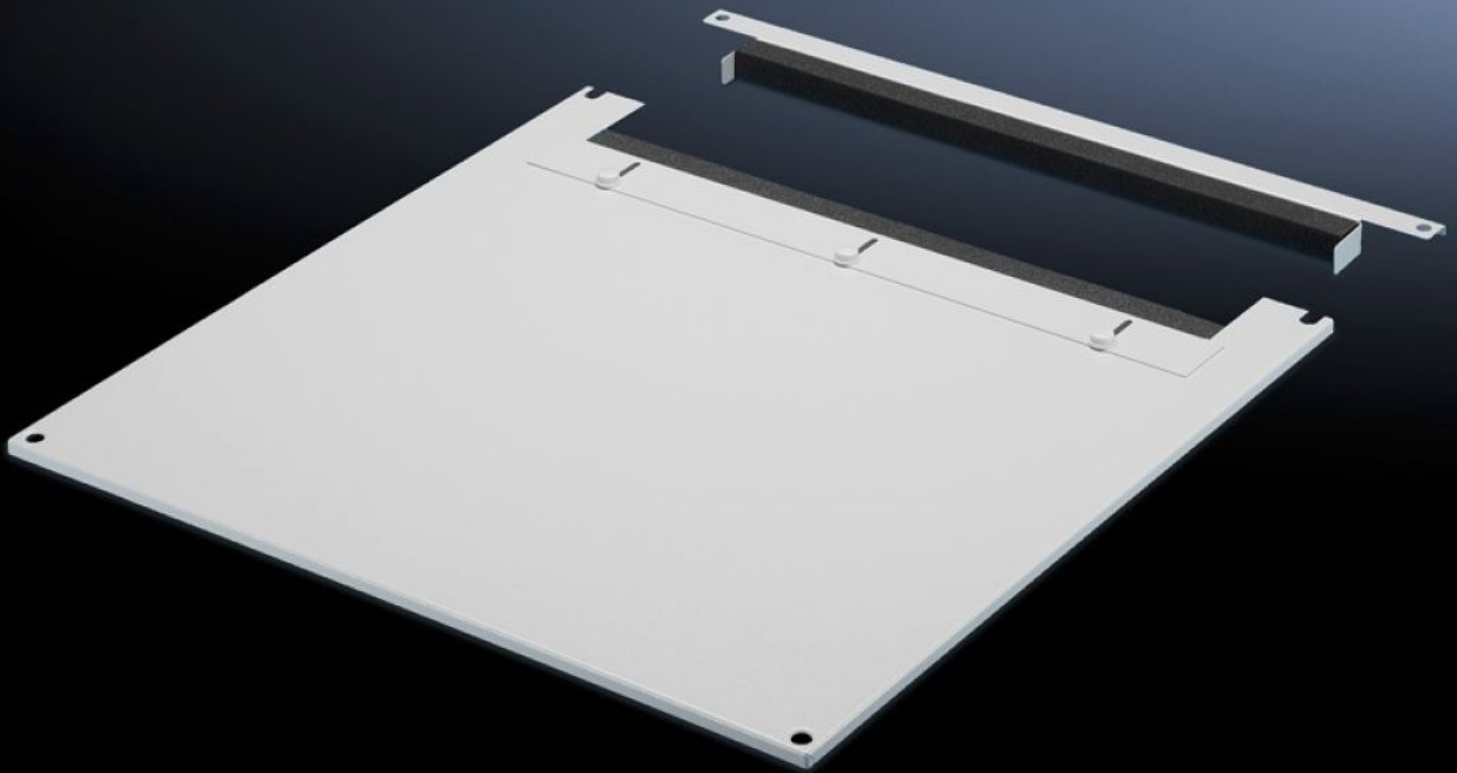


**Rittal – The System.**

Faster – better – everywhere.



**TS 7826.865**

**Roof plate for cable entry, two-piece**

State: 19.10.2024 (Source: [rittal.com/si-sl](https://www.rittal.com/si-sl))

ENCLOSURES

POWER DISTRIBUTION

CLIMATE CONTROL

IT INFRASTRUCTURE

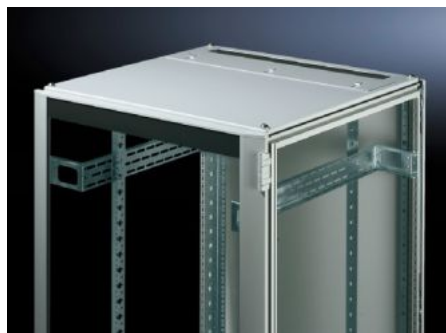
SOFTWARE & SERVICES

FRIEDHELM LOH GROUP



# TS 7826.865 - Roof plate for cable entry, two-piece for VX, VX IT, TS, TS IT

The two-piece design allows easy retro-fitting, by simply removing the front part of the plate for retrospective cable entry.



## Features

Model No.	TS 7826.865
Product description	In exchange for the standard roof. Equipped with a sliding angular bracket in the rear section. Rubber cable clamp strip on both sides for attaching cable bundles and bunched cables. Due to the symmetrical design of the frame, side cable entry can also be achieved by rotating the roof plate. The two-piece design allows convenient retrofitting.
Material	Sheet steel
Colour	RAL 7035
To fit	Width: 800 mm Depth: 600 mm
Packs of	1 pc(s).
Weight/pack	7,064 kg
Net weight	6.711
Gross weight	7.064
Customs tariff number	94039910
EAN	4028177390256
E-Number Sweden	E7239741

# Features

---

ETIM 7.0	EC000744
ECLASS 8.0	27182405

---

## Tender text

Two-piece cable entry roof plate for TS, TS IT

Material: Sheet steel, spray finished in RAL 7035

Dimensions (W x H x D): 800 mm x 0 mm x 600 mm