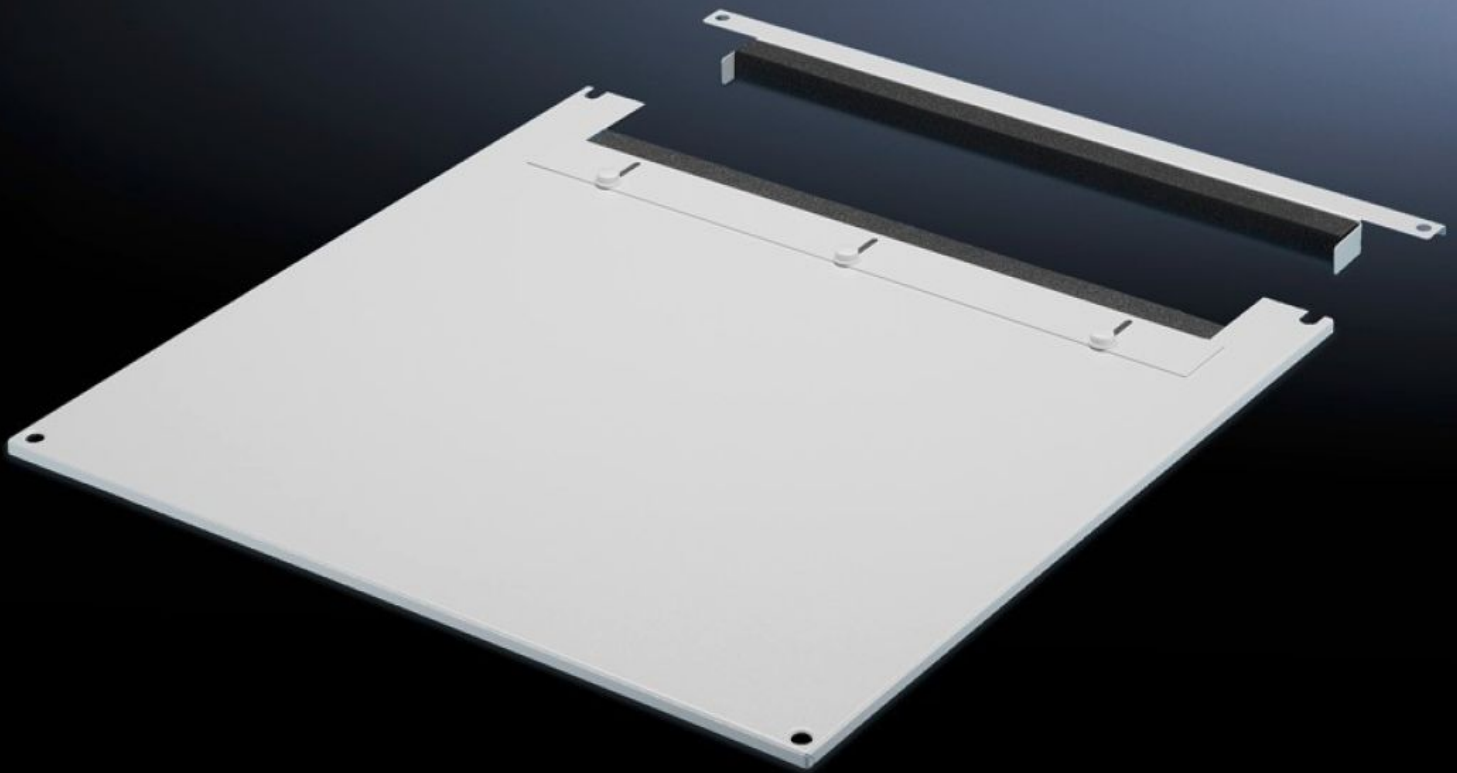


Rittal – The System.

Faster – better – everywhere.



TS 7826.665

Roof plate for cable entry, two-piece

State: 19.10.2024 (Source: [rittal.com/si-sl](https://www.rittal.com/si-sl))

ENCLOSURES

POWER DISTRIBUTION

CLIMATE CONTROL

IT INFRASTRUCTURE

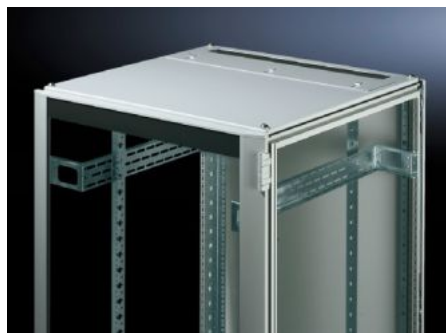
SOFTWARE & SERVICES

FRIEDHELM LOH GROUP



TS 7826.665 - Roof plate for cable entry, two-piece for VX, VX IT, TS, TS IT

The two-piece design allows easy retro-fitting, by simply removing the front part of the plate for retrospective cable entry.



Features

Model No.	TS 7826.665
Product description	In exchange for the standard roof. Equipped with a sliding angular bracket in the rear section. Rubber cable clamp strip on both sides for attaching cable bundles and bunched cables. Due to the symmetrical design of the frame, side cable entry can also be achieved by rotating the roof plate. The two-piece design allows convenient retrofitting.
Material	Sheet steel
Colour	RAL 7035
To fit	Width: 600 mm Depth: 600 mm
Packs of	1 pc(s).
Weight/pack	5,406 kg
Net weight	5.136
Gross weight	5.38
Customs tariff number	94039910
EAN	4028177390225
E-Number Sweden	E7239737

Features

ETIM 7.0	EC000744
ECLASS 8.0	27182405

Tender text

Roof plate for cable entry, two-piece for TS, TS IT

Material: Sheet steel, spray-finished in RAL 7035

Dimensions (W x D): 600 mm x 600 mm