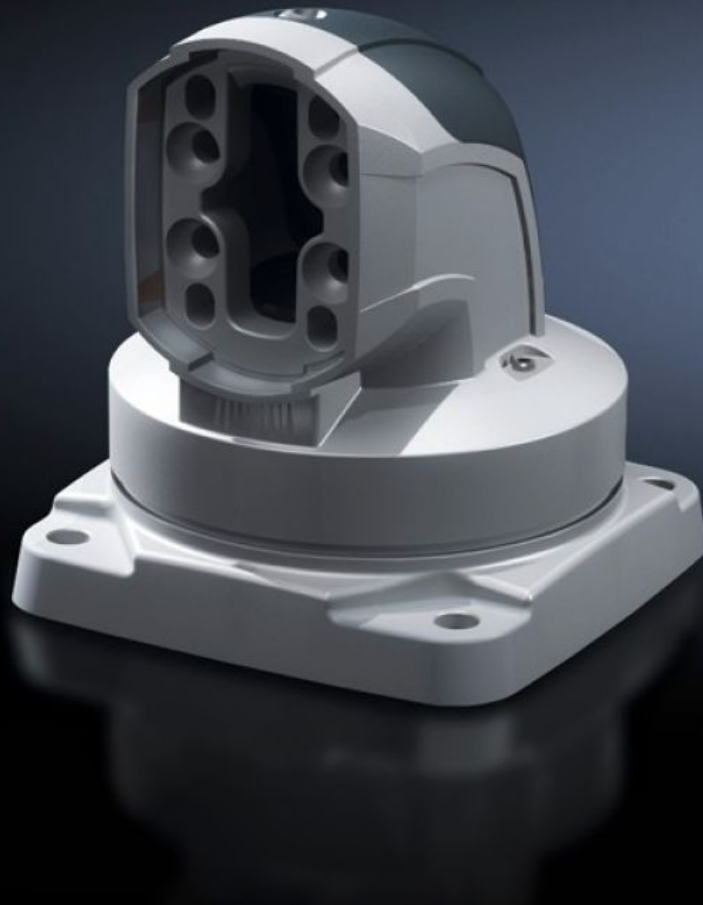


Rittal – The System.

Faster – better – everywhere.



CP 6206.700

Top-mounted joint CP 60

State: 27.9.2024 (Source: [rittal.com/si-sl](https://www.rittal.com/si-sl))

ENCLOSURES

POWER DISTRIBUTION

CLIMATE CONTROL

IT INFRASTRUCTURE

SOFTWARE & SERVICES

FRIEDHELM LOH GROUP



CP 6206.700 - Top-mounted joint CP 60 Horizontal outlet

For swivel mounting of the support arm system on horizontal surfaces – also suitable for suspending from the ceiling. Removable cover for simple cable entry.

Features

Model No.	CP 6206.700
Product description	For swivel mounting of the support arm system on horizontal surfaces – also suitable for suspending from the ceiling. Removable cover for simple cable entry.
Material	Cover: Plastic Top-mounted joint: Cast aluminium
Colour	Cover: RAL 7024 Top-mounted joint: RAL 7035
Supply includes	Seals Screws for restricting rotation range Adjusting screws Self-tapping screws for support section attachment
Rotating/tilting	Yes
Rotation angle/swivel area	approx. 330°. The range of rotation can be limited by inserting the screws/limit plate provided.
Dimensions	Width: 146 mm Height: 158 mm
Packs of	1 pc(s).
Weight/pack	2,2 kg
Net weight	2.86
Gross weight	3.06
Customs tariff number	76169990
EAN	4028177684294
ETIM 7.0	EC000882

Features

ECLASS 8.0

27400556

Approvals

Explanations

Manufacturer's declaration