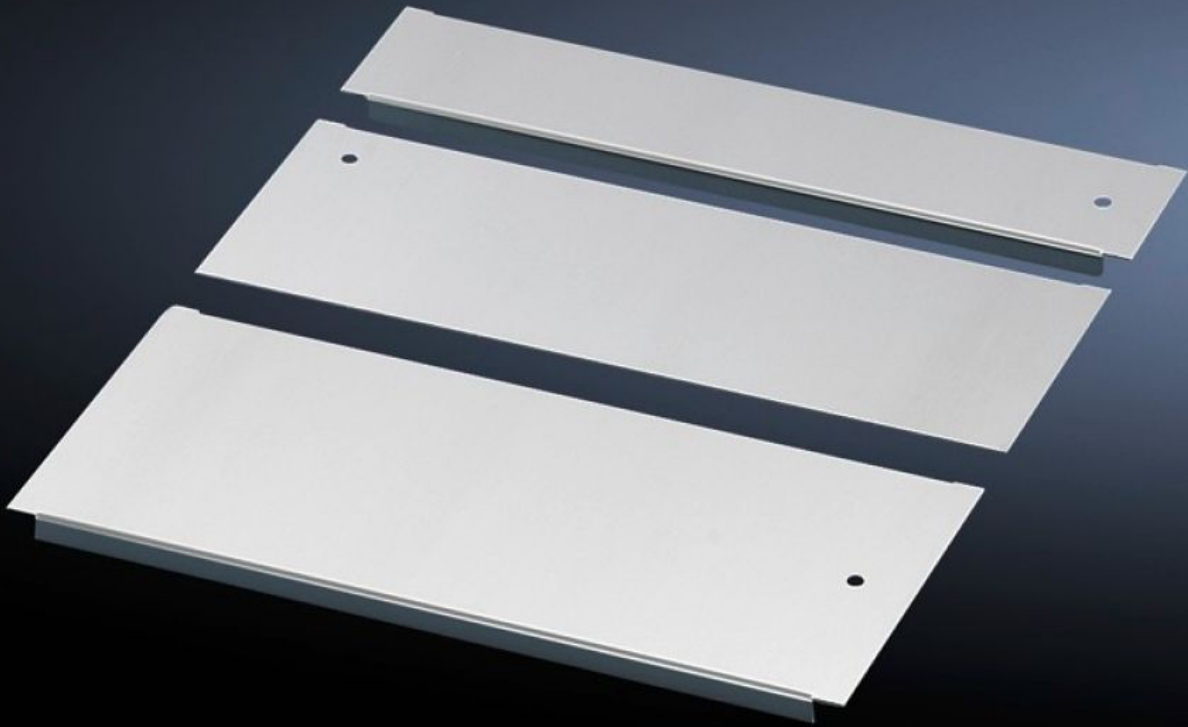


Rittal – The System.

Faster – better – everywhere.



DK 5502.570 Gland plate

State: 26.9.2024 (Source: [rittal.com/si-sl](https://www.rittal.com/si-sl))

ENCLOSURES

POWER DISTRIBUTION

CLIMATE CONTROL

IT INFRASTRUCTURE

SOFTWARE & SERVICES

FRIEDHELM LOH GROUP



DK 5502.570 - Gland plate for TS IT, TX CableNet

Potential equalisation is provided via assembly components and earthing points. The gland plate set is used to conceal the entire base opening.

Features

Model No.	DK 5502.570
Design	Gland plate, solid, with sliding panel, multi-piece
Product description	Potential equalisation is provided via assembly components and earthing points. Gland plate set: To conceal the entire base opening. Gland plate modules: Select suitable modules depending on the application.
Material	Sheet steel
Surface finish	Zinc-plated
Supply includes	Assembly parts
To fit	Enclosure type: TS IT Width: 800 mm Depth: 1,200 mm
Packs of	1 pc(s).
Weight/pack	9,95 kg
Net weight	9.453
Gross weight	9.95
Customs tariff number	73269098
EAN	4028177682719
E-Number Sweden	E7239579
ETIM 7.0	EC002620
ECLASS 8.0	27189261

Tender text

DK Gland plate Set,
with sliding plate
solid, multi-piece
WxD: 800x1200 mm,
for TS IT, TX CableNet
Sheet steel, zinc-plated