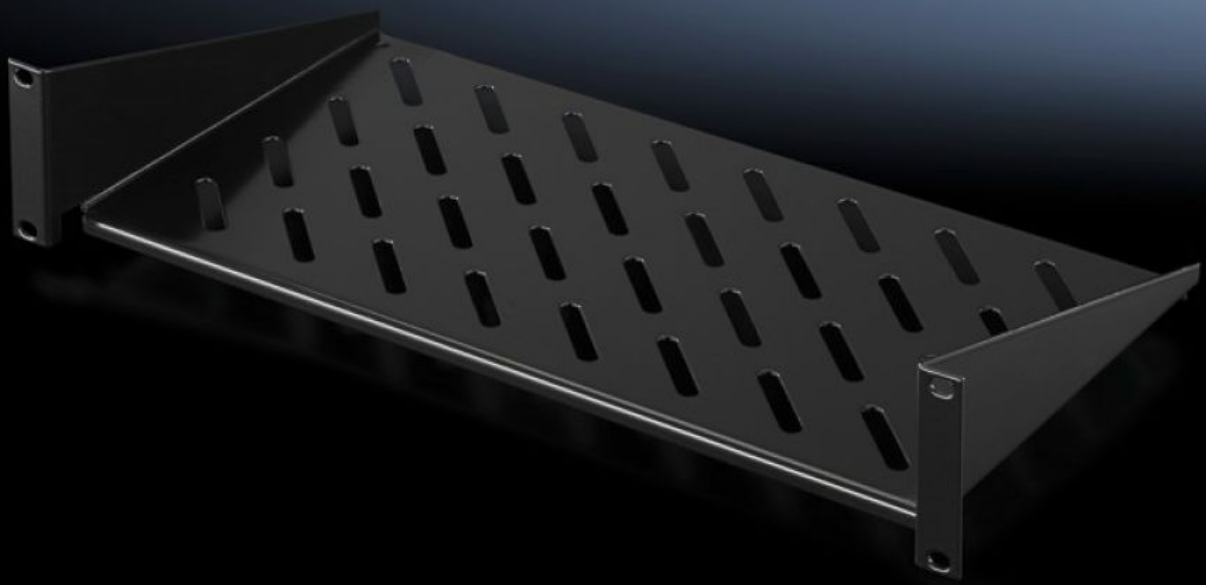


**Rittal – The System.**

Faster – better – everywhere.



**DK 5501.615**

**Component shelf 2 U, static  
installation**

State: 27.9.2024 (Source: [rittal.com/si-sl](https://www.rittal.com/si-sl))

ENCLOSURES

POWER DISTRIBUTION

CLIMATE CONTROL

IT INFRASTRUCTURE

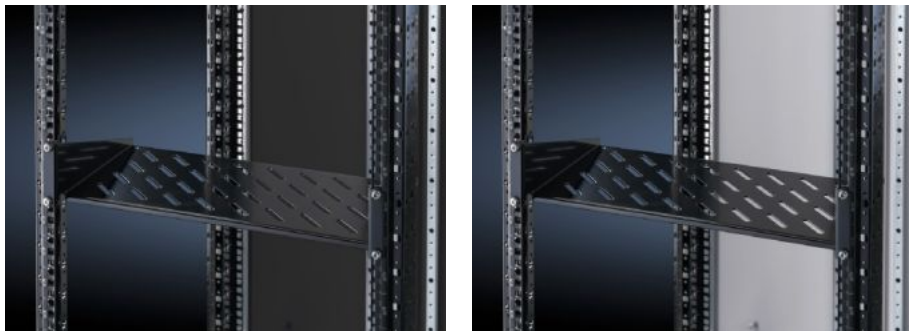
SOFTWARE & SERVICES

FRIEDHELM LOH GROUP



# DK 5501.615 - Component shelf 2 U, static installation

Component shelf 2 U, static installation for attachment to the 482.6 mm (19") system punchings.  
Load capacity: 25 kg.



## Features

Model No.	DK 5501.615
Design	482.6 mm (19")
Product description	For mounting between 482.6 mm (19") mounting angles.
Material	Sheet steel
Surface finish	Spray-finished
Colour	RAL 9005
Load capacity	25 kg surface load, static
Note	Not suitable for combination with telescopic slides.
Dimensions	Width: 482.6 mm Depth: 250 mm
Packs of	1 pc(s).
Weight/pack	2,5 kg
Net weight	2.078
Gross weight	2.125
PCF/PU (Cradle-to-Gate)	9.5 kg CO2 eq (Cat B)
Note on the PCF class	Category B: PCF value (cradle-to-gate) approximated based on product weight and self-declared

# Features

---

Customs tariff number	73269098
EAN	4028177679054
E-Number Sweden	E7239584
ETIM 7.0	EC002620
ECLASS 8.0	27189261

---