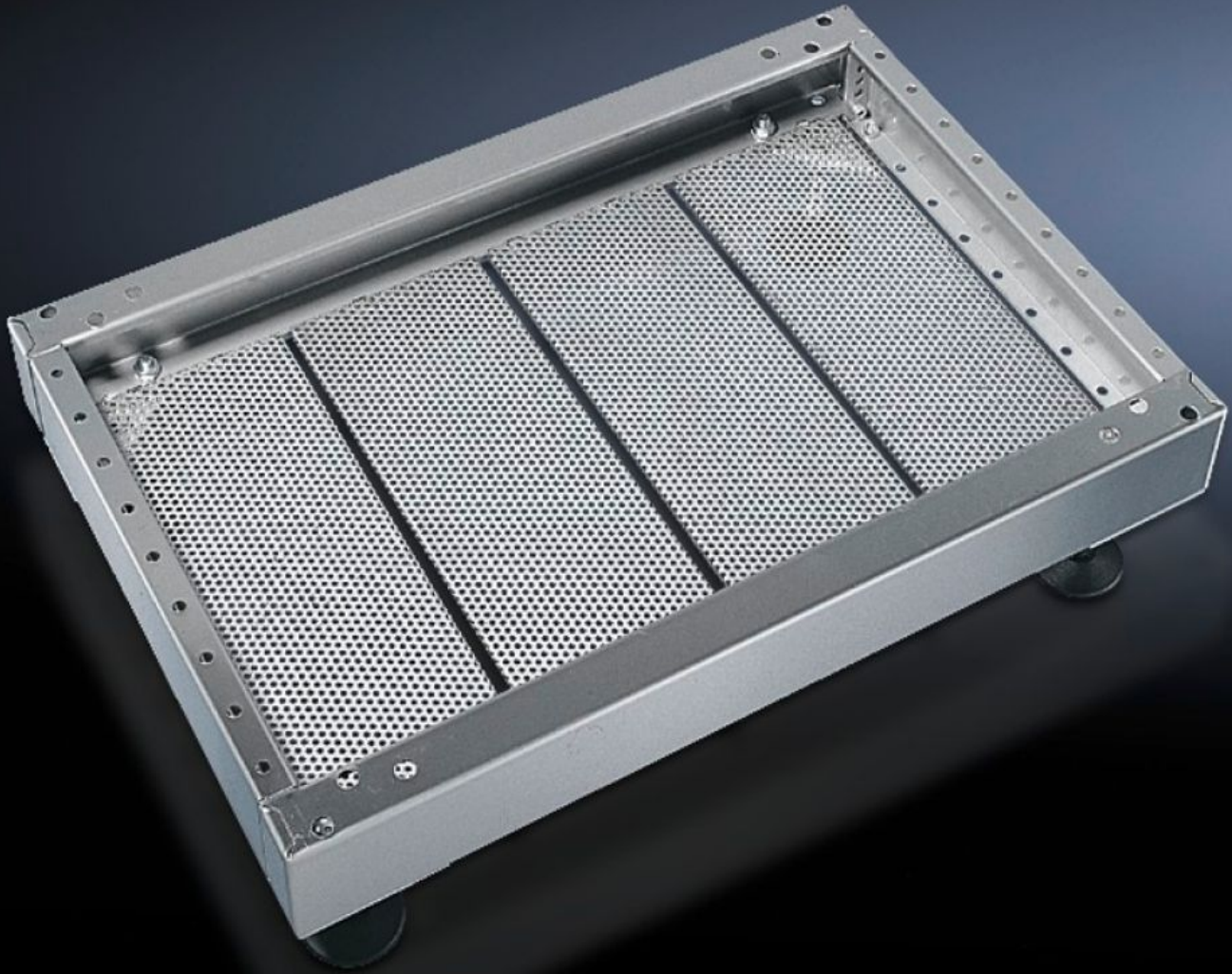


**Rittal – The System.**

Faster – better – everywhere.



**PS 2908.000**

**Base/plinth trim, modular**

State: 19.10.2024 (Source: [rittal.com/si-sl](http://rittal.com/si-sl))

ENCLOSURES

POWER DISTRIBUTION

CLIMATE CONTROL

IT INFRASTRUCTURE

SOFTWARE & SERVICES

FRIEDHELM LOH GROUP



# PS 2908.000 - Base/plinth trim, modular for base/plinth TS, stainless steel and base/plinth, complete, stainless steel

For secure cable routing in the base/plinth between the floor and the enclosure.

## Features

Model No.	PS 2908.000
Product description	For secure cable routing in the base/plinth between the floor and the enclosure.
Material	Stainless steel 1.4301 (AISI 304)
Supply includes	4 base/plinth trim panels
Note	One base/plinth trim panel is needed per 200 mm base/plinth width.
Dimensions	Width: 175 mm
To fit	Depth: = 500 mm
Packs of	4 pc(s).
Weight/pack	3,272 kg
Net weight	3.072
Gross weight	3.271
Customs tariff number	73269098
EAN	4028177034310
ETIM 8	EC002620
ETIM 7.0	EC002620
ECLASS 8.0	27189261