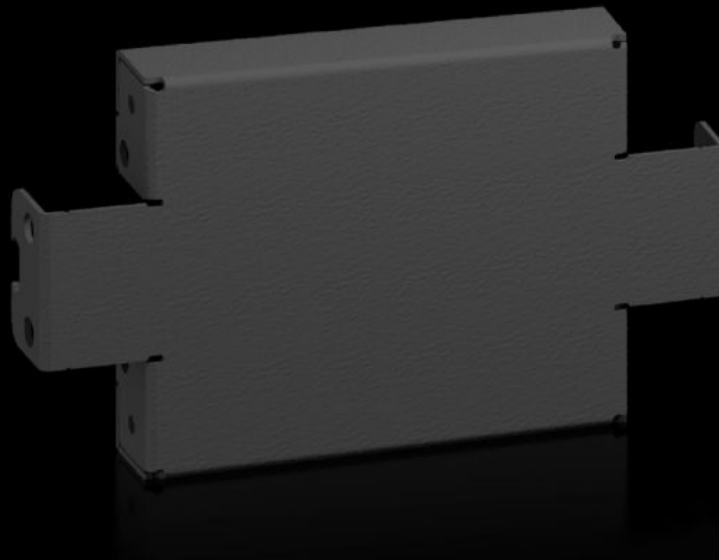


**Rittal – The System.**

Faster – better – everywhere.



**AX 2820.310**

**Base/plinth trim panels, side, 100 mm**

State: 27.9.2024 (Source: [rittal.com/si-sl](https://www.rittal.com/si-sl))

ENCLOSURES

POWER DISTRIBUTION

CLIMATE CONTROL

IT INFRASTRUCTURE

SOFTWARE & SERVICES

FRIEDHELM LOH GROUP



# AX 2820.310 - Base/plinth trim panels, side, 100 mm for AX

To finish off a base/plinth unit at the sides and for additional stabilisation or for the interior configuration of bayed base/plinths. One 200 mm high or two 100 mm high trim panels may optionally be fitted on 200 mm high base/plinths.

## Features

Model No.	AX 2820.310
Product description	To finish off a base/plinth unit at the sides and for additional stabilisation or for the interior configuration of bayed base/plinths. One 200 mm high or two 100 mm high trim panels may optionally be fitted on 200 mm high base/plinths.
Material	Sheet steel
Colour	RAL 9005
Supply includes	Assembly parts
Note	Components of the 1st generation of the base/plinth system cannot be combined with components of the 2nd generation
Dimensions	Height: 100 mm
To fit	Enclosure type: AX Depth: = 300 mm
Type rating to UL 50E	Type 1 Type 3R Type 4 Type 12
Packs of	2 pc(s).
Weight/pack	0,33 kg
Net weight	0.66
Gross weight	0.667
Customs tariff number	94039910
EAN	4028177942554

# Features

---

ETIM 8	EC000721
ETIM 7.0	EC000721
ECLASS 8.0	27182003

# Approvals

---

Approvals	UL + C-UL - FTTA
-----------	------------------