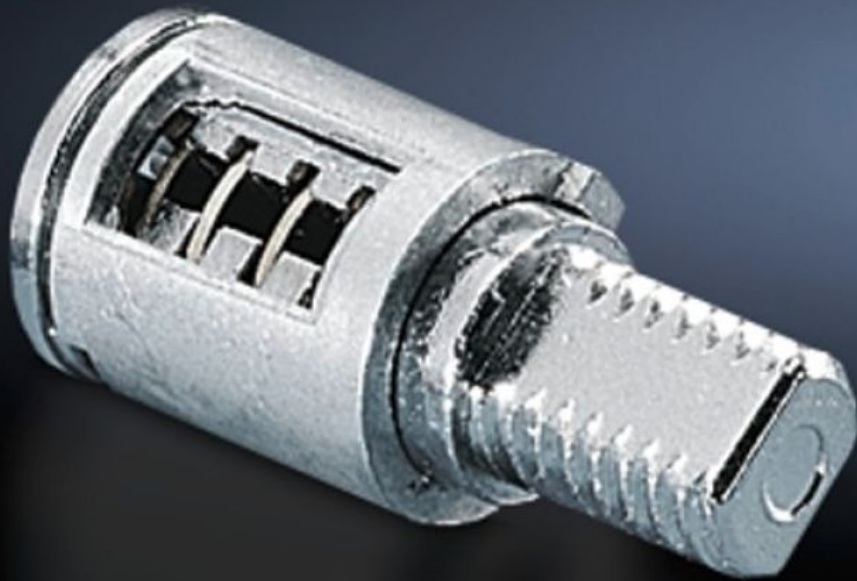


Rittal – The System.

Faster – better – everywhere.



SZ 2525.000

Lock cylinder inserts

State: 19.10.2024 (Source: [rittal.com/si-sl](https://www.rittal.com/si-sl))

ENCLOSURES

POWER DISTRIBUTION

CLIMATE CONTROL

IT INFRASTRUCTURE

SOFTWARE & SERVICES

FRIEDHELM LOH GROUP



SZ 2525.000 - Lock cylinder inserts

Lock cylinder inserts, lock no. 3524 E for cam locks.



Features

Model No.	SZ 2525.000
Design	C
Material	Die-cast zinc
Supply includes	with 2 keys
Length	28,3 mm
Lock	Lock insert: with cylinder insert, lock no. 3524 E
To fit enclosure type	AE with stainless steel cam 1.4301 (AISI 304) One-piece console - stainless steel console cover
Packs of	1 pc(s).
Weight/pack	0,04 kg
Net weight	0.036
Gross weight	0.037
Customs tariff number	83016000
EAN	4028177026193

Features

ETIM 8	EC000743
ETIM 7.0	EC000743
ECLASS 8.0	27409218
