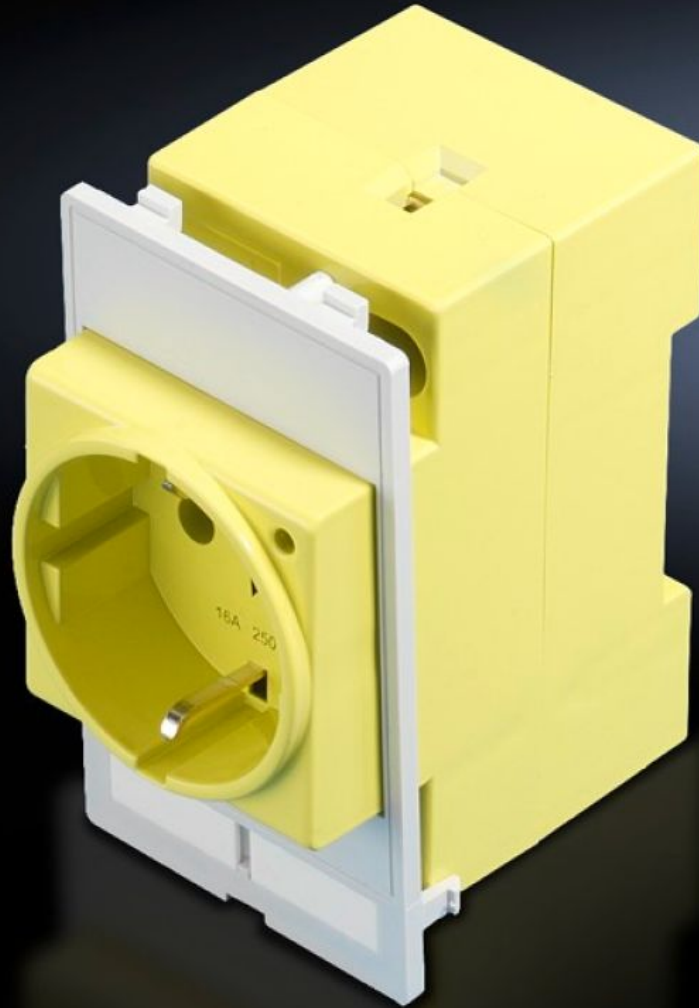


Rittal – The System.

Faster – better – everywhere.



SZ 2482.410

Socket module

State: 19.10.2024 (Source: [rittal.com/si-sl](https://www.rittal.com/si-sl))

ENCLOSURES

POWER DISTRIBUTION

CLIMATE CONTROL

IT INFRASTRUCTURE

SOFTWARE & SERVICES

FRIEDHELM LOH GROUP



SZ 2482.410 - Socket module For mounting frame, modular interface flap

Socket module for installing in a mounting frame.



Features

Model No.	SZ 2482.410
Design	Socket modules Germany (VDE), screw terminals max. 6 mm ² , connection at rear, colour: yellow (RAL 1016), for installation in front of master switch
Product description	Socket module for installation in a mounting frame.
Function principle	Can be used in a single or double mounting frame.
Material	Plastic, PBTP, basic material to UL 94-V0
Colour	Yellow
Packs of	1 pc(s).
Weight/pack	0,14 kg
Net weight	0.139
Gross weight	0.15
Customs tariff number	85366990
EAN	4028177490727
ETIM 8	EC002625
ETIM 7.0	EC002625
ECLASS 8.0	27189234

Approvals

Explanations

Declaration of conformity