

Rittal – The System.

Faster – better – everywhere.



SV 3525.010

PLS special busbars E-Cu

State: 26/09/2024 (Source: rittal.com/sg-en)

ENCLOSURES

POWER DISTRIBUTION

CLIMATE CONTROL

IT INFRASTRUCTURE

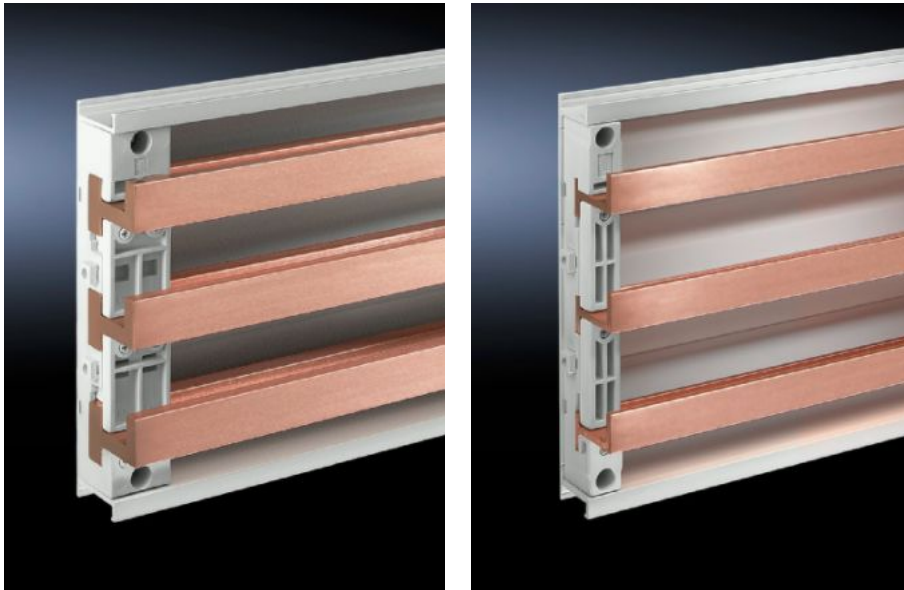
SOFTWARE & SERVICES

FRIEDHELM LOH GROUP



SV 3525.010 - PLS special busbars E-Cu

Lengths range from 495 mm to 2400 mm.



Features

Model No.	SV 3525.010
Material	E-Cu
Bar thickness	5 mm
Cross-section	300 mm ²
Length	895 mm
Note	May be cut individually to required length
Busbar type	Busbar E-Cu
To fit busbar system	PLS 800
Dimensions	Length: 895 mm
To fit	Width: = 1,000 mm
Packs of	3 pc(s).
Weight/pack	6.96 kg
Net weight	6.57
Gross weight	6.88

Features

Copper weight (kg per piece)	2.32
Customs tariff number	74071000
EAN	4028177504004
ETIM 8	EC001522
ETIM 7.0	EC001522
ECLASS 8.0	27370303

Approvals

Approvals	UL + C-UL (listed)
Explanations	Declaration of conformity Declaration of conformity UK

Tender text

PLS 800 special busbars
PLS 800 special busbars E-Cu
Technical specifications
Length: 895 mm
Bar thickness: 5 mm
Cross section: 300 qmm
Weight: 2.67 Kg/m
Electrical parameters
IEC: to 800 A
UL 508: 700 A
System:
Rittal RiLine60