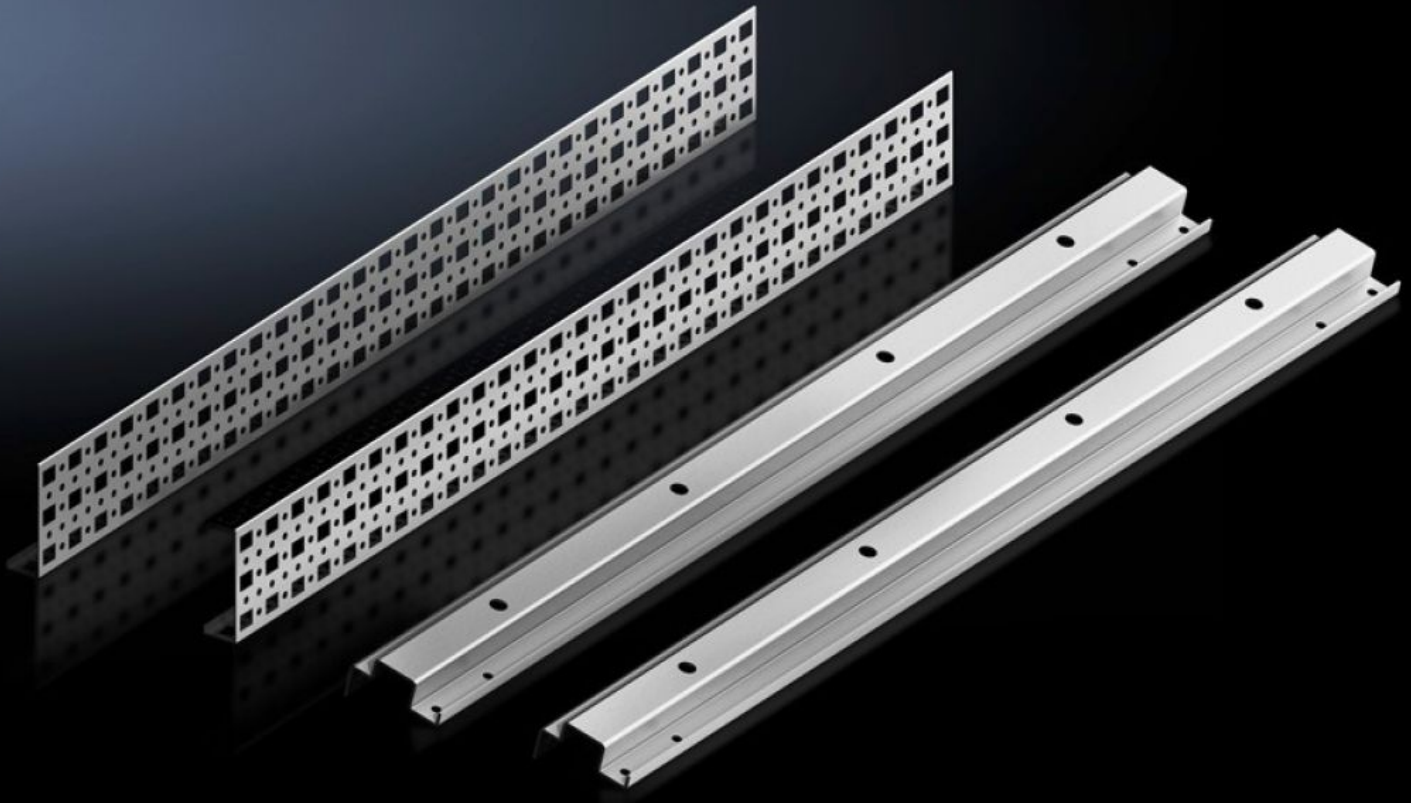


# Rittal – The System.

Faster – better – everywhere.



## SV 9677.540 System attachment

State: 27/09/2024 (Source: [rittal.com/nz-en](http://rittal.com/nz-en))

ENCLOSURES

POWER DISTRIBUTION

CLIMATE CONTROL

IT INFRASTRUCTURE

SOFTWARE & SERVICES

FRIEDHELM LOH GROUP



# SV 9677.540 - System attachment for TS, VX SE

For attaching busbar systems with 185 mm centre-to-centre spacing in TS/SE enclosures.

## Features

Model No.	SV 9677.540
Product description	For attaching busbar systems with 185 mm centre-to-centre spacing in TS/SE enclosures.
Material	Sheet steel
Surface finish	Zinc-plated
Supply includes	2 system attachments (left/right) 2 punched sections without mounting flanges Assembly parts System attachment (centre)
Assembly instruction	For variable depth adjustment of the busbar system in the enclosure, the TS punched section with mounting flange 17 x 73 mm (for the outer mounting level) is additionally required. Select according to the enclosure depth.
Packs of	1 pc(s).
Weight/pack	5.78 kg
Net weight	5.5
Gross weight	5.78
Customs tariff number	83024900
EAN	4028177705364
ETIM 7.0	EC001900
ECLASS 8.0	27400613