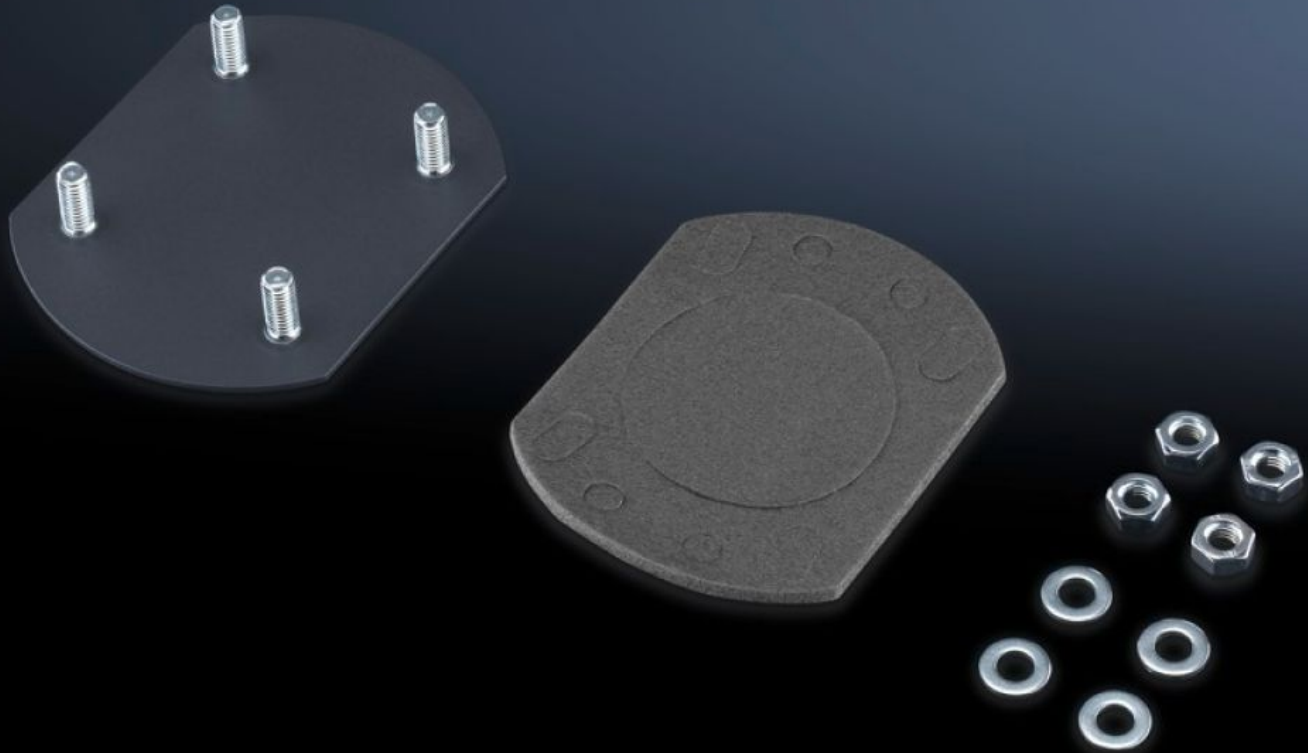


Rittal – The System.

Faster – better – everywhere.



CP 6505.200 Cover plate

State: 27/09/2024 (Source: rittal.com/nz-en)

ENCLOSURES

POWER DISTRIBUTION

CLIMATE CONTROL

IT INFRASTRUCTURE

SOFTWARE & SERVICES

FRIEDHELM LOH GROUP



CP 6505.200 - Cover plate for support arm connection

Features

Model No.	CP 6505.200
Product description	For secure sealing of an unrequired support arm connection in the enclosure
Material	Sheet steel
Surface finish	Spray-finished
Colour	RAL 7024
Supply includes	Seal and assembly parts
To fit support arm connection	rectangular 90 x 71 mm
Note	If there are already 2 support arm cut-outs provided with the Comfort Panel, Optipanel and Compact Panel command panels, a cover plate is included with the supply of the enclosure.
Packs of	1 pc(s).
Weight/pack	0.12 kg
Net weight	0.1
Gross weight	0.101
PCF/PU (Cradle-to-Gate)	0.5 kg CO2 eq (Cat B)
Note on the PCF class	Category B: PCF value (cradle-to-gate) approximated based on product weight and self-declared
Customs tariff number	94039910
EAN	4028177389823
ETIM 7.0	EC000456
ECLASS 8.0	27189263