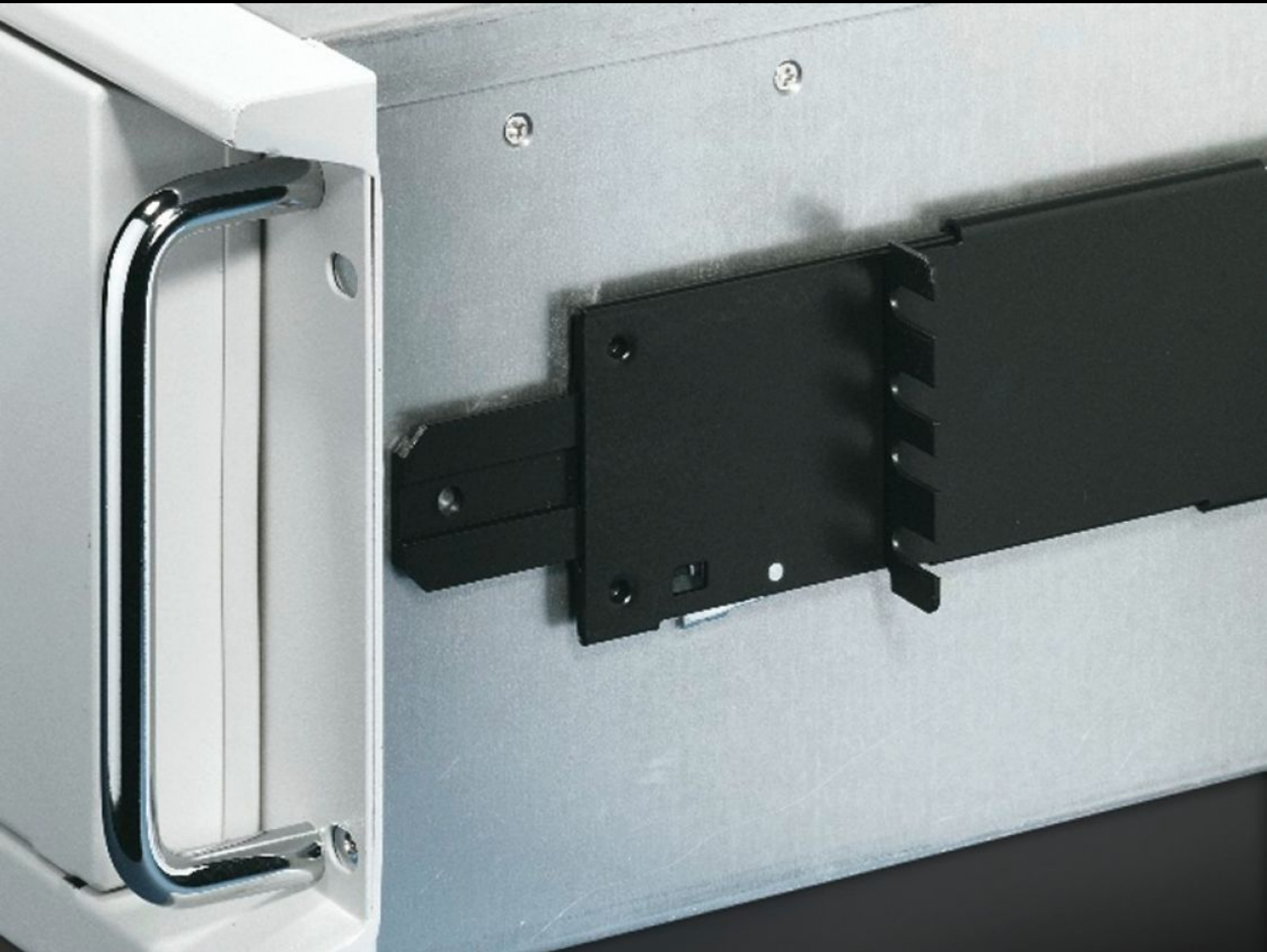


**Rittal – The System.**

Faster – better – everywhere.



**TS 3659.190**

**Server telescopic slides**

State: 19/10/2024 (Source: [rittal.com/nz-en](https://www.rittal.com/nz-en))

ENCLOSURES

POWER DISTRIBUTION

CLIMATE CONTROL

IT INFRASTRUCTURE

SOFTWARE & SERVICES

FRIEDHELM LOH GROUP



# TS 3659.190 - Server telescopic slides

For optimum accessibility to the servers, even when built-in.

## Features

Model No.	TS 3659.190
Design	For 559.0-789.0 mm distance between levels
Product description	Facilitate optimum accessibility to the servers, even when built-in. For servers with a maximum width of 426 mm.
Material	Sheet steel
Supply includes	Telescopic slide with mounting kit Assembly parts
Extension length	596.4 mm
To fit	Enclosure type: TS: 800 mm Enclosure type: TS IT
Load capacity	30 kg
Note	Only in conjunction with L-shaped mounting angles
Packs of	2 pc(s).
Weight/pack	3.146 kg
Net weight	2.946
Gross weight	3.146
Customs tariff number	73269098
EAN	4028177222915
ETIM 8	EC002520
ETIM 7.0	EC002520
ECLASS 8.0	27189261