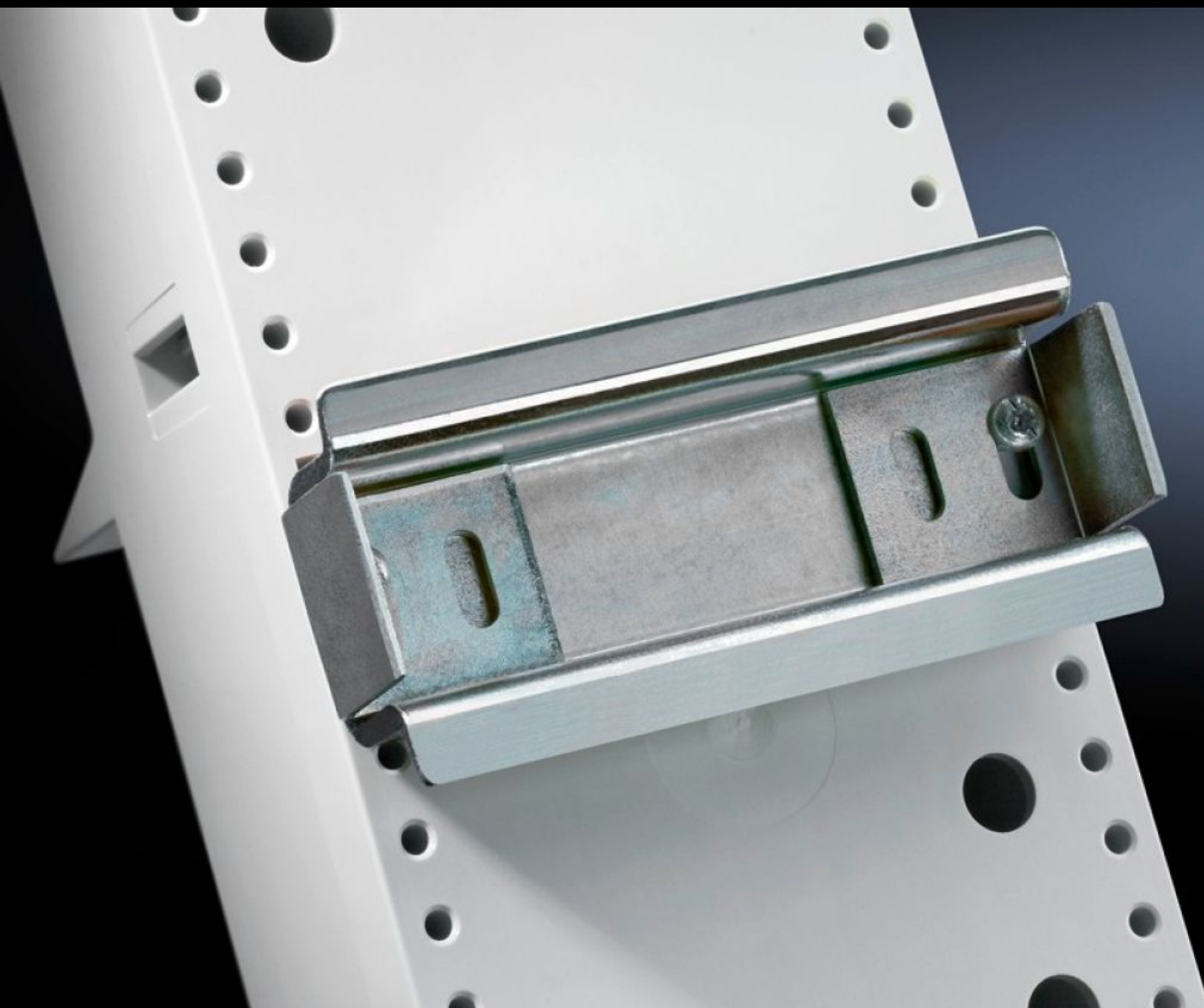


Rittal – The System.

Faster – better – everywhere.



SV 9320.120

DIN-skinne 35 x 15 mm

Stat: 27.09.2024 (Kilde: [rittal.com/no-no](https://www.rittal.com/no-no))

ENCLOSURES

POWER DISTRIBUTION

CLIMATE CONTROL

IT INFRASTRUCTURE

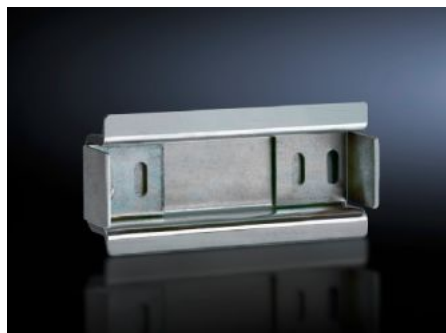
SOFTWARE & SERVICES

FRIEDHELM LOH GROUP



SV 9320.120 - DIN-skinne 35 x 15 mm for Mini-PLS/CB-apparatadapter

Bæreskinne for Mini-PLS og CB-apparatadapter.



Funksjoner

Bestillingsnr.	SV 9320.120
Materiale	Stålplate
Overflate	Forsinket
Leveringsomfang	Inkl. festeskruer og forskyvningsbeskyttelse på siden
Pakker for best.nr.	9342.400 9342.410 9629.000
Dimensjoner	Bredde: 72 mm
Pakkeenhet	5 stk.
Vekt/VE	0,405 kg
Nettovekt	0.36
Bruttovekt	0.403
PCF/PU (Cradle-to-Gate)	1,5 kg CO2 eq (Cat B)
Note on the PCF class	Category B: PCF value (cradle-to-gate) approximated based on product weight and self-declared
Tolltariffnummer	73269098
EAN	4028177219762

Funksjoner

ETIM 7.0	EC001285
----------	----------

ECLASS 8.0	27141143
------------	----------