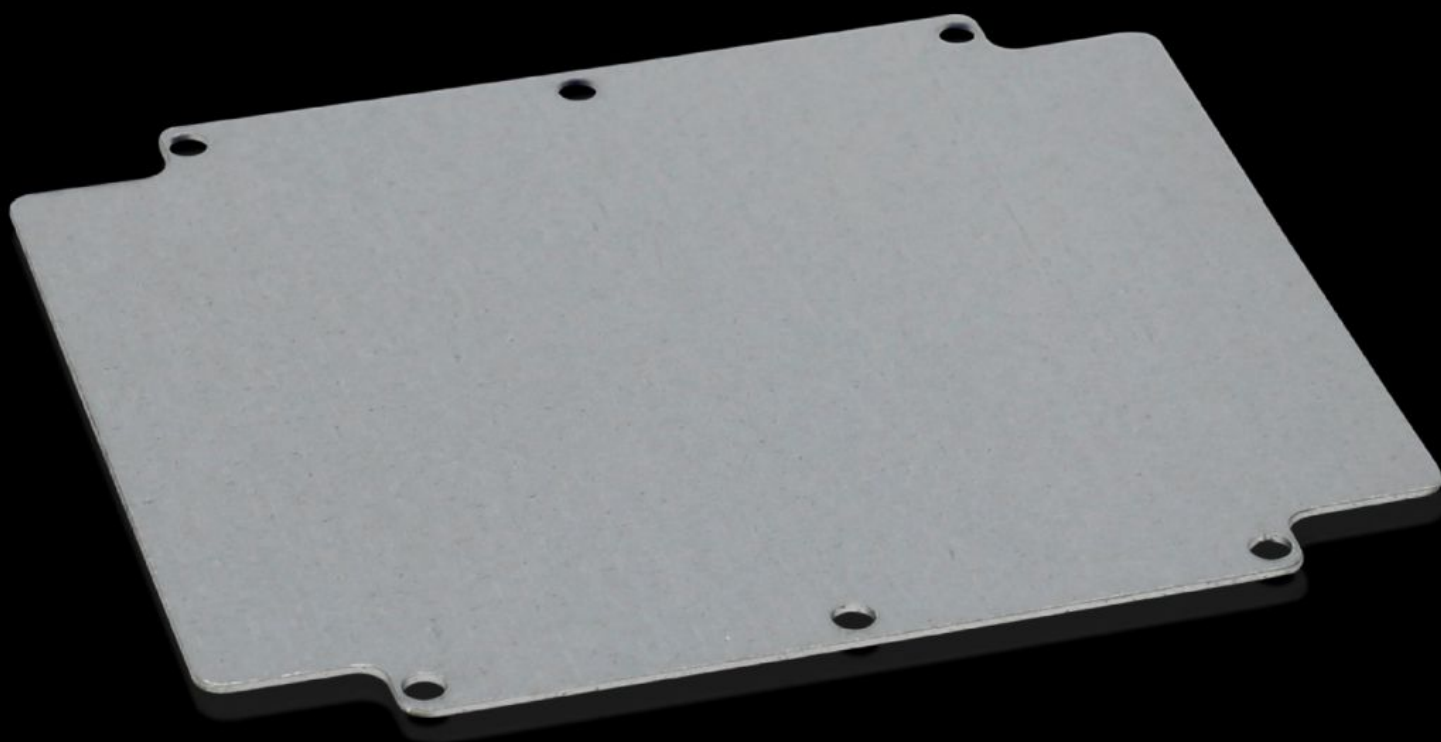


Rittal – The System.

Faster – better – everywhere.



GA 9116.700 Montasjeplate

Stat: 19.10.2024 (Kilde: [rittal.com/no-no](https://www.rittal.com/no-no))

ENCLOSURES

POWER DISTRIBUTION

CLIMATE CONTROL

IT INFRASTRUCTURE

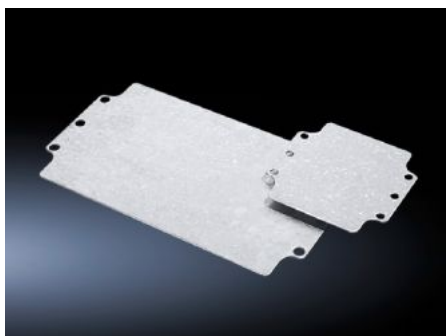
SOFTWARE & SERVICES

FRIEDHELM LOH GROUP



GA 9116.700 - Montasjeplate for GA

For individuell innvendig utbygging, med festehull.



Funksjoner

Bestillingsnr.	GA 9116.700
Produktbeskrivelse	For individuell innvendig utbygging, med festehull.
Materiale	Stålplate
Overflate	Forsinket
Mål montasjeplate (B x H)	183 mm x 214 mm
Passer for	Kapslingstype: GA Bredde: = 202 mm Høyde: = 232 mm
Pakkeenhet	1 stk.
Vekt/VE	1,18 kg
Nettovekt	0.4
Bruttovekt	0.442
PCF/PU (cradle-to-gate)	4,5 kg CO2 eq (Cat B)
Note on the PCF class	Category B: PCF value (cradle-to-gate) approximated based on product weight and self-declared
Tolltariffnummer	73269098
EAN	4028177154360
ETIM 7.0	EC000213

Funksjoner

ECLASS 8.0

27409216