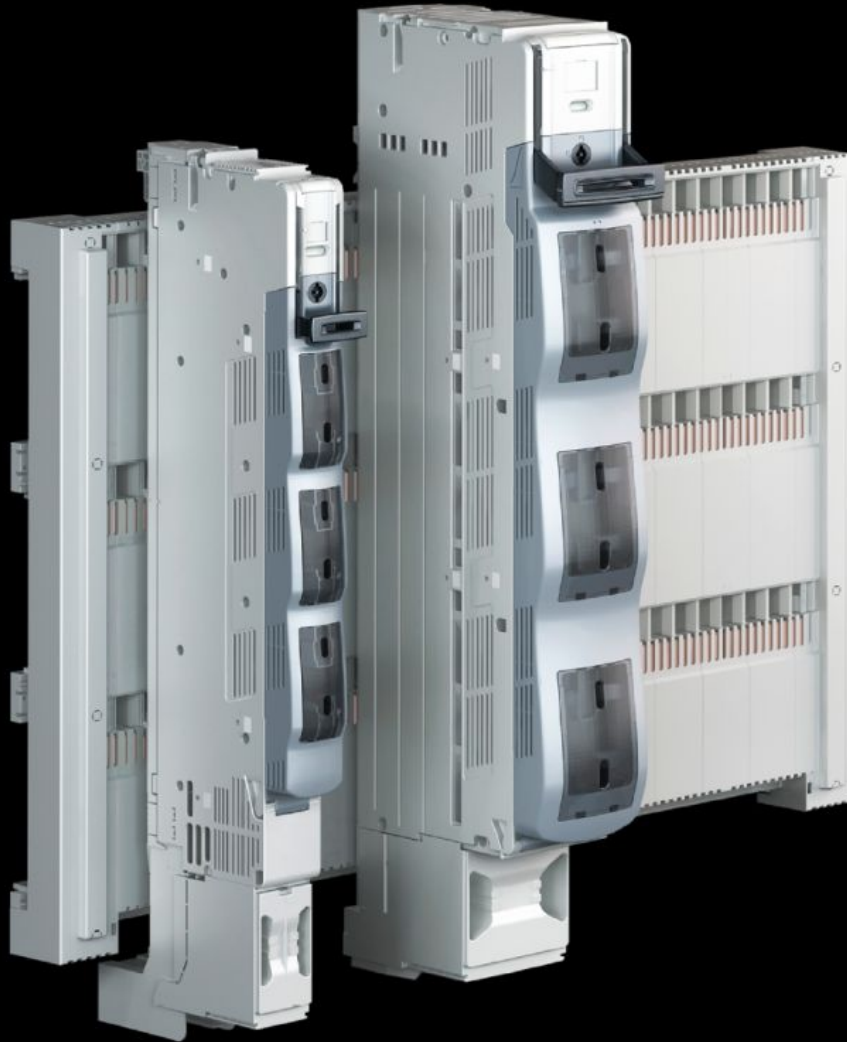


**Rittal – The System.**

Faster – better – everywhere.



**SV 9677.260**

**NH slimline switch-disconnector**

State: 2024.9.27 (Source: [rittal.com/lt-en](http://rittal.com/lt-en))

ENCLOSURES

POWER DISTRIBUTION

CLIMATE CONTROL

IT INFRASTRUCTURE

SOFTWARE & SERVICES

FRIEDHELM LOH GROUP



# SV 9677.260 - NH slimline switch-disconnector

3-pole, for bar systems with 185 mm centre-to-centre spacing.

## Features

Model No.	SV 9677.260
Design	3-pole, switchable
Function principle	Automatic quick-break contact allows operator-independent switching Double-break for reliable disconnection of the contacts
Material	Polyamide Fire protection corresponding to UL 94-V0 Contact tracks: Partially silver-plated hard copper
Colour	Chassis: RAL 7035 Cover: RAL 7001 Handle: RAL 7016
For NH size	2
For bar systems with centre-to-centre spacing	185 mm
Cable outlet	Bottom
Type of electrical connection	Screw M12
Installation type	Screw attachment
Number of poles	3-pole
Rated operating voltage	690 V, 3~
Rated operating current max.	400 A
Test specification	IEC/DIN EN 60 947-3 DIN EN 60 269-2 (fuse inserts)
Dimensions	Width: 100 mm Height: 772 mm
Connection for round conductor cross-sections	6 - 240 mm <sup>2</sup>

# Features

---

To fit busbars	Height: 10 mm
Packs of	1 pc(s).
Weight/pack	13.7 kg
Net weight	11.82
Gross weight	12.22
Copper weight (kg per piece)	3.685
Customs tariff number	85043129
EAN	4028177806771
ETIM 7.0	EC001040
ECLASS 8.0	27371401

# Approvals

---

Explanations	Declaration of conformity Declaration of conformity UK
--------------	---