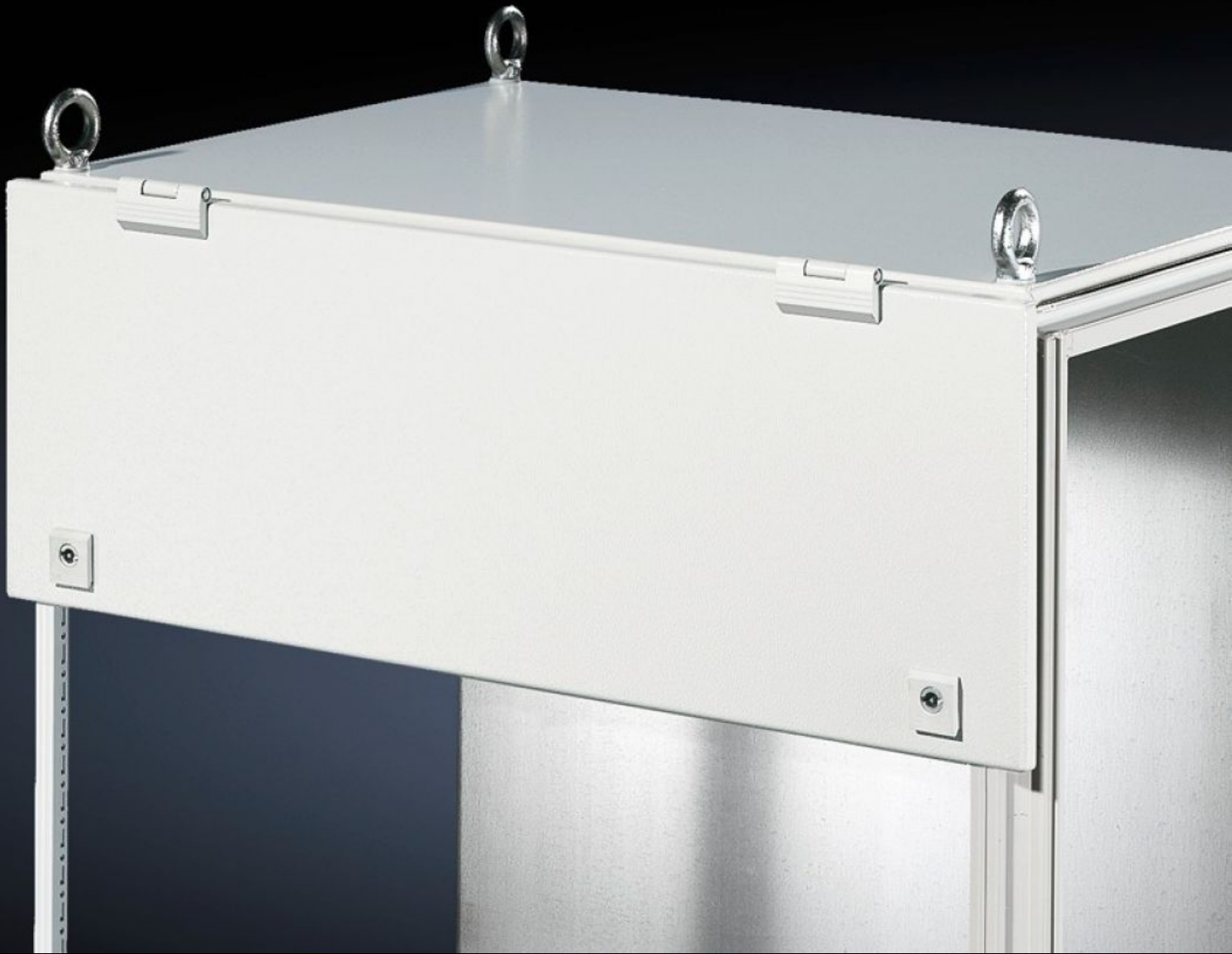


Rittal – The System.

Faster – better – everywhere.



TS 8801.230

Trim panel, hinged at the top

State: 2024.9.26 (Source: [rittal.com/lt-en](https://www.rittal.com/lt-en))

ENCLOSURES

POWER DISTRIBUTION

CLIMATE CONTROL

IT INFRASTRUCTURE

SOFTWARE & SERVICES

FRIEDHELM LOH GROUP



TS 8801.230 - Trim panel, hinged at the top for TS

For the installation of control and display components, in conjunction with modular front design or TS protective bars.



Features

Model No.	TS 8801.230
Product description	For the installation of control and display components, in conjunction with modular front design and protective bar TS.
Material	Sheet steel, 2.0 mm
Surface finish	Textured paint
Colour	RAL 7035
Supply includes	Hinges, cam locks with double-bit insert and assembly parts.
Note	Not in conjunction with top mounting module for TS
Dimensions	Width: 600 mm Height: 300 mm
Packs of	1 pc(s).
Weight/pack	4.3 kg
Net weight	4.03
Gross weight	4.23
Customs tariff number	94039910
EAN	4028177319202

Features

ETIM 7.0	EC002617
----------	----------

ECLASS 8.0	27189260
------------	----------