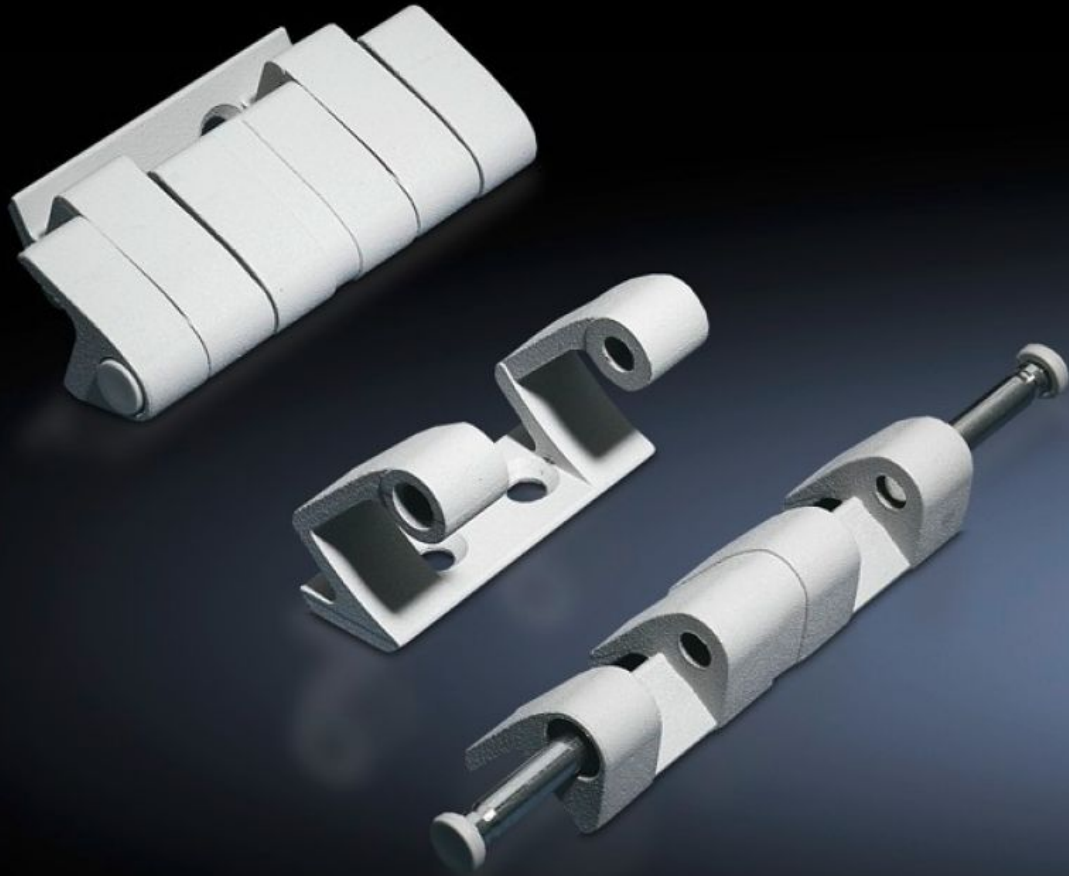


# Rittal – The System.

Faster – better – everywhere.



## SZ 8800.190 180° hinge

State: 2024.10.19 (Source: [rittal.com/lt-en](https://www.rittal.com/lt-en))

ENCLOSURES

POWER DISTRIBUTION

CLIMATE CONTROL

IT INFRASTRUCTURE

SOFTWARE & SERVICES

FRIEDHELM LOH GROUP



# SZ 8800.190 - 180° hinge

To extend the door opening angle to 180°

## Features

Model No.	SZ 8800.190
Material	Die-cast zinc
Colour	RAL 7035
Supply includes	Assembly parts
Door opening angle	180°
Note	The protection category of the enclosure may be reduced. The doors must be hinged on the same side when enclosures are bayed.
Suitable for door variant	Sheet steel door
To fit enclosure type	TS VX SE
Packs of	4 pc(s).
Weight/pack	0.908 kg
Net weight	0.812
Gross weight	0.941
Customs tariff number	83021000
EAN	4028177213166
ETIM 7.0	EC001167
ECLASS 8.0	27409219