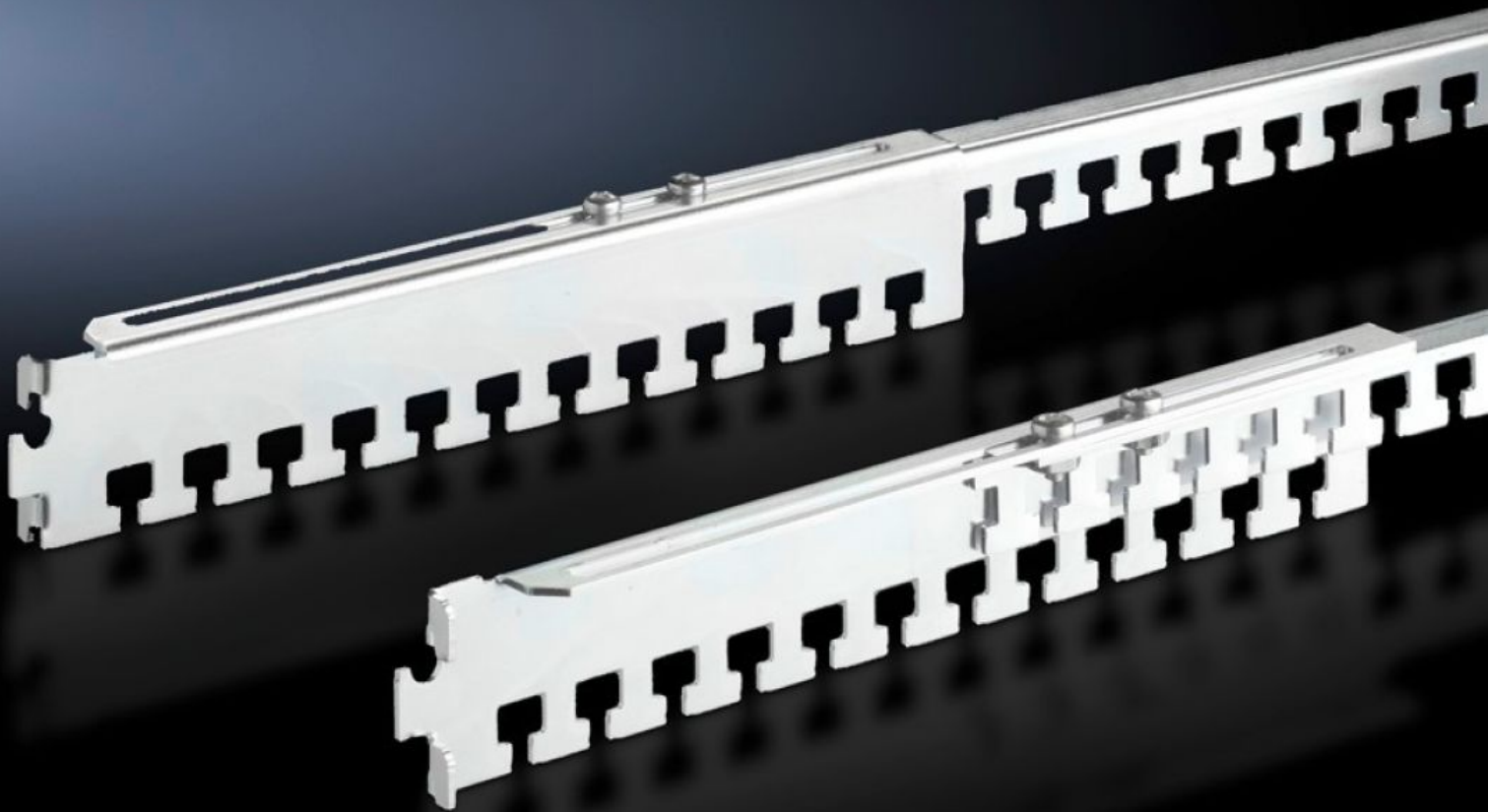


**Rittal – The System.**

Faster – better – everywhere.



**DK 7858.162**

**Cable clamp rails, depth-variable**

State: 2024.9.27 (Source: [rittal.com/lt-en](https://www.rittal.com/lt-en))

ENCLOSURES

POWER DISTRIBUTION

CLIMATE CONTROL

IT INFRASTRUCTURE

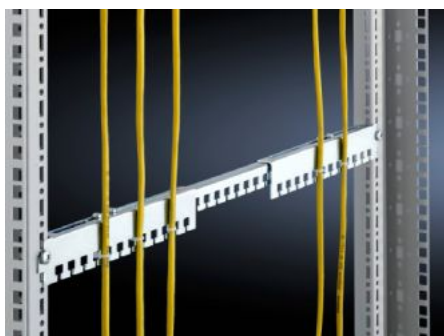
SOFTWARE & SERVICES

FRIEDHELM LOH GROUP



# DK 7858.162 - Cable clamp rails, depth-variable for TS, TE

For TS and 482.6 mm (19") mounting frames, the depth variability of the rails facilitates flexible adaptation of their length to the attachment distance between the two 482.6 mm (19") mounting frames.



## Features

Model No.	DK 7858.162
Product description	For use with TS and between the mounting angles of the TS IT in the enclosure depth.
Applications	<p>For cable routing on the enclosure frame and for strain relief of the routed cables. The cables can be attached to the cable clamp rails with cable ties or velcro fasteners.</p> <p>The cable clamp rails can be located horizontally at the rear directly onto a 482.6 mm (19") mounting level or in the enclosure space between two mounting levels. An additional screw fastening secures the unit.</p> <p>The depth variability of the rails allows their length to be flexibly adapted to the given mounting distance between the two 482.6 mm (19") mounting levels.</p>
Material	Sheet steel
Surface finish	Zinc-plated
Supply includes	Assembly parts
Distance between levels	500 - 895 mm
Note	Mounting dimensions + 152 mm = distance between levels 482.6 mm (19")
Packs of	4 pc(s).

# Features

Weight/pack	1.7 kg
Net weight	1.6
Gross weight	1.7
Customs tariff number	73269098
EAN	4028177437388
ETIM 7.0	EC000322
ECLASS 8.0	27400604

## Tender text

Cable clamp rail, depth-adjustable, for TE, TS, FR(i),  
500 - 895 mm

Material: sheet steel, zinc-plated, passivated