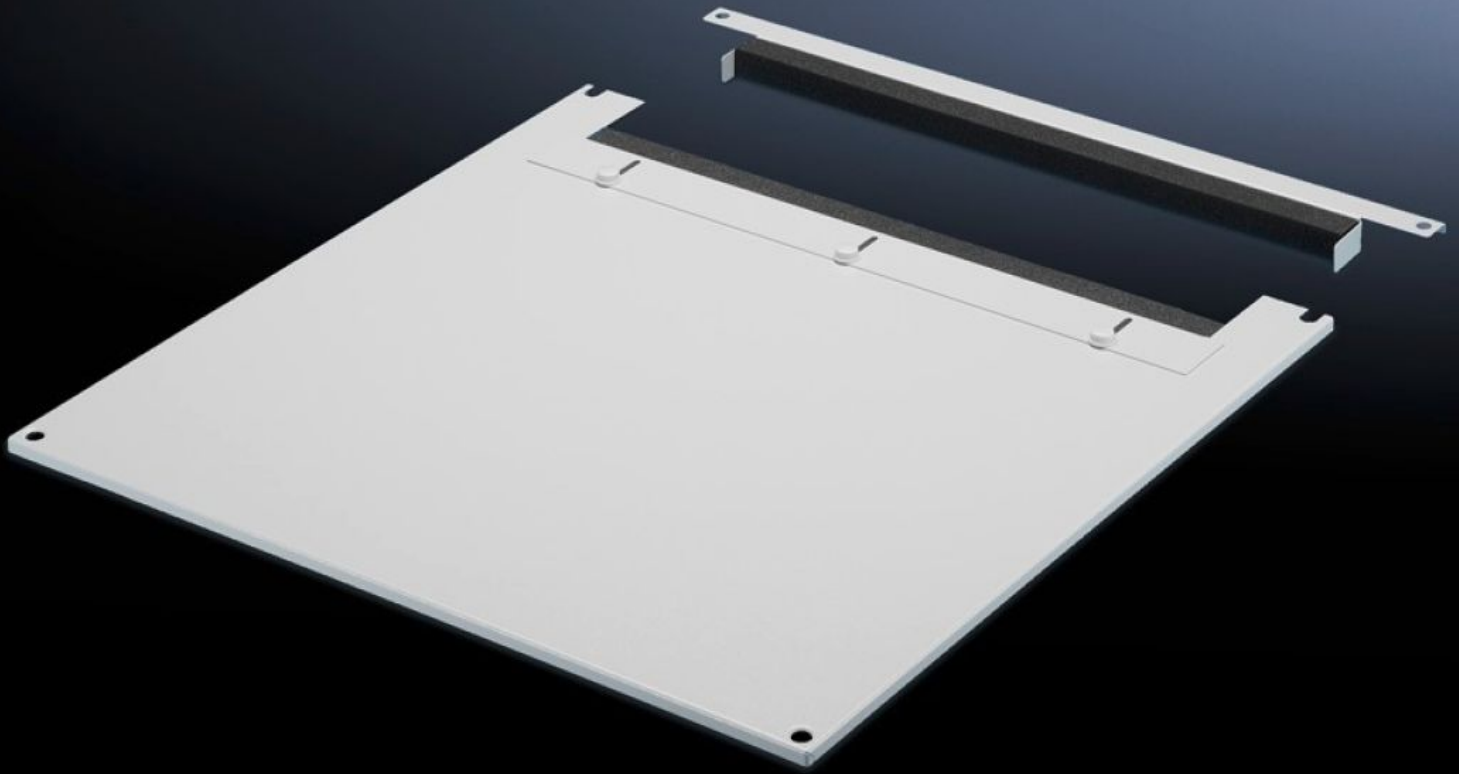


Rittal – The System.

Faster – better – everywhere.



TS 7826.865

Roof plate for cable entry, two-piece

State: 2024.9.26 (Source: [rittal.com/lt-en](https://www.rittal.com/lt-en))

ENCLOSURES

POWER DISTRIBUTION

CLIMATE CONTROL

IT INFRASTRUCTURE

SOFTWARE & SERVICES

FRIEDHELM LOH GROUP



TS 7826.865 - Roof plate for cable entry, two-piece for VX, VX IT, TS, TS IT

The two-piece design allows easy retro-fitting, by simply removing the front part of the plate for retrospective cable entry.



Features

| | |
|-----------------------|---|
| Model No. | TS 7826.865 |
| Product description | In exchange for the standard roof. Equipped with a sliding angular bracket in the rear section. Rubber cable clamp strip on both sides for attaching cable bundles and bunched cables. Due to the symmetrical design of the frame, side cable entry can also be achieved by rotating the roof plate. The two-piece design allows convenient retrofitting. |
| Material | Sheet steel |
| Colour | RAL 7035 |
| To fit | Width: 800 mm Depth: 600 mm |
| Packs of | 1 pc(s). |
| Weight/pack | 7.064 kg |
| Net weight | 6.711 |
| Gross weight | 7.064 |
| Customs tariff number | 94039910 |
| EAN | 4028177390256 |
| E-Number Sweden | E7239741 |

Features

| | |
|------------|----------|
| ETIM 7.0 | EC000744 |
| ECLASS 8.0 | 27182405 |

Tender text

Two-piece cable entry roof plate for TS, TS IT

Material: Sheet steel, spray finished in RAL 7035

Dimensions (W x H x D): 800 mm x 0 mm x 600 mm