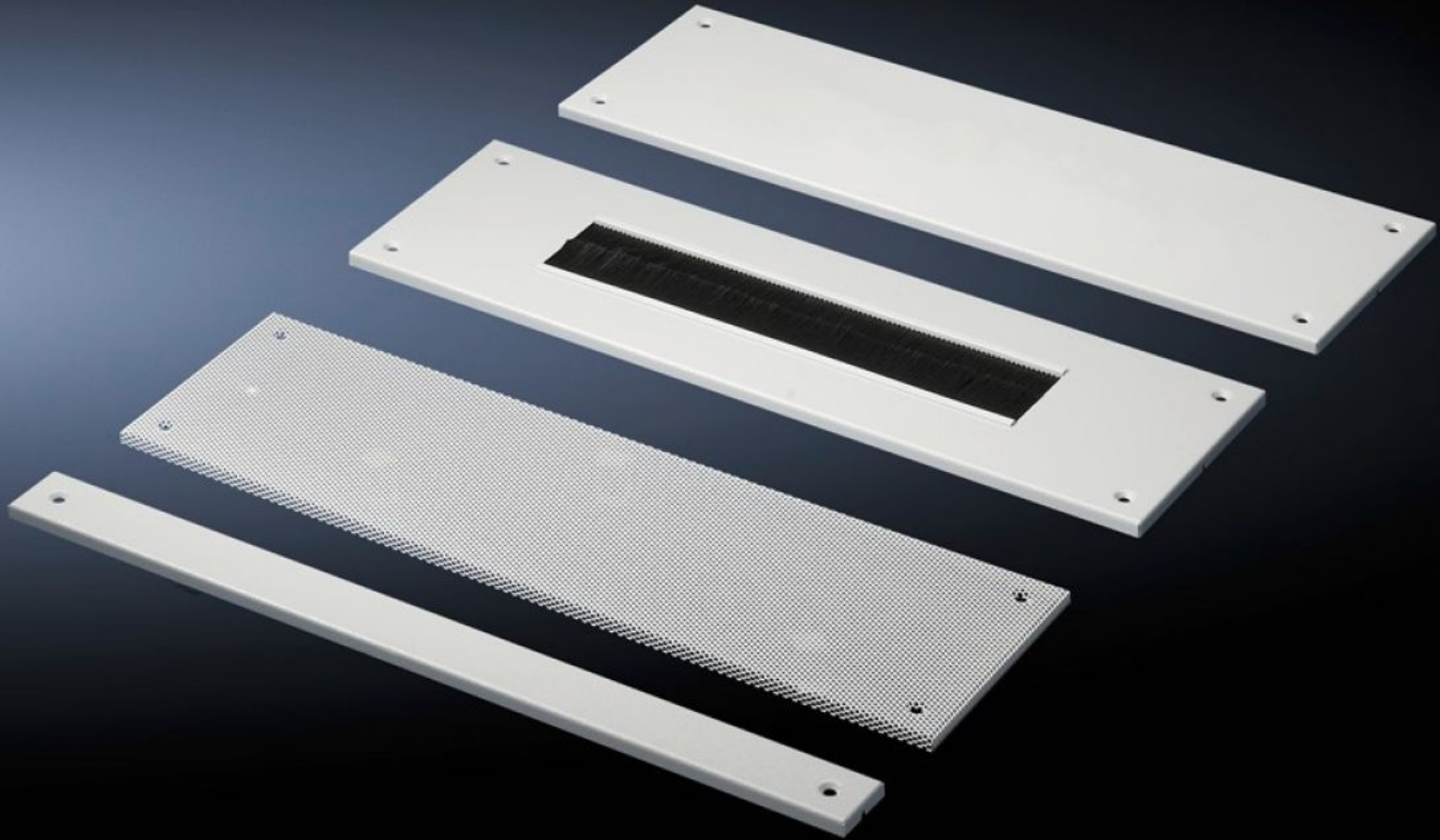


Rittal – The System.

Faster – better – everywhere.



TE 7526.760 Module plates

State: 2024.9.27 (Source: rittal.com/lt-en)

ENCLOSURES

POWER DISTRIBUTION

CLIMATE CONTROL

IT INFRASTRUCTURE

SOFTWARE & SERVICES

FRIEDHELM LOH GROUP



TE 7526.760 - Module plates for TE

The base area of the TE may be varied as required using the module plates.

Features

Model No.	TE 7526.760
Design	Solid
Product description	The base area of the TE may be varied as required using the module plates.
Applications	Please note when selecting suitable gland plates: Enclosure width minus 150 mm Enclosure depth minus 50 mm
Material	Sheet steel, zinc-plated
Supply includes	Assembly parts
Dimensions	Width: 450 mm Depth: 200 mm
To fit	Enclosure type: TE Width: 600 mm
Packs of	1 pc(s).
Weight/pack	1.186 kg
Net weight	0.986
Gross weight	1.186
Customs tariff number	94039910
EAN	4028177196544
ETIM 7.0	EC002620
ECLASS 8.0	27189261

Tender text

Solid module plate

450 mm wide module plate, 200 mm deep module plate

Material: Sheet steel, zinc-plated