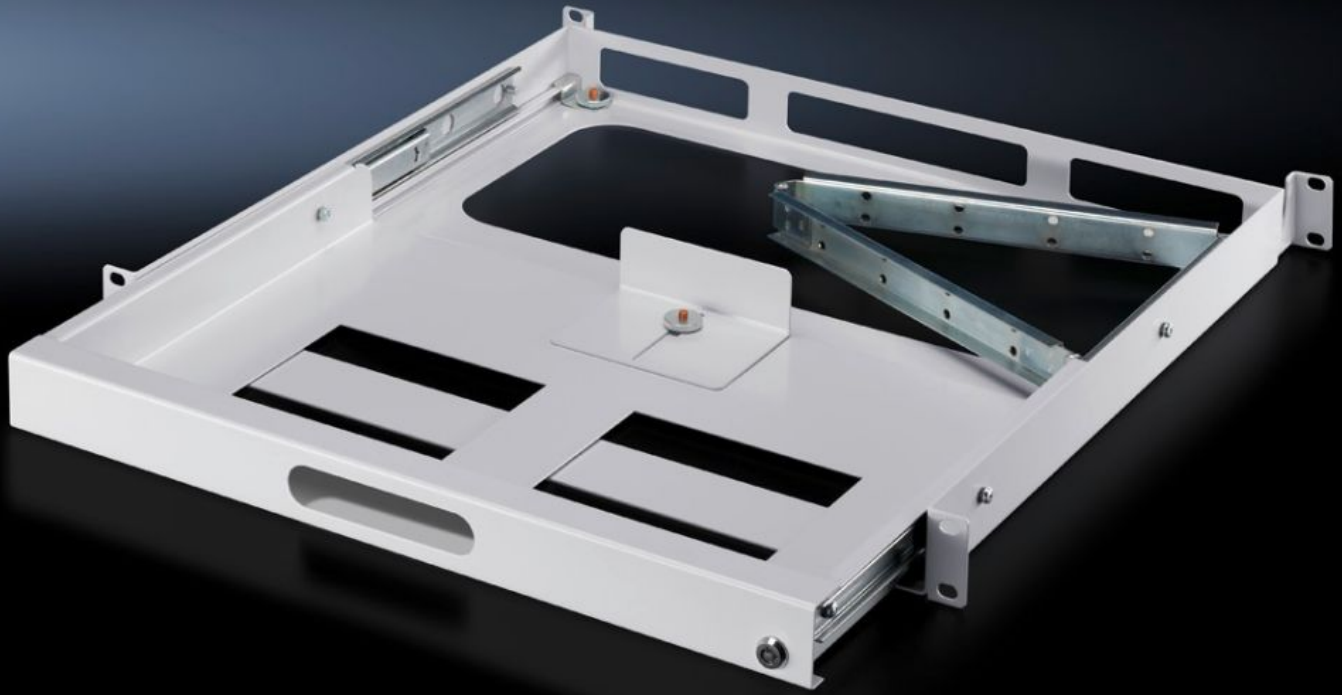


Rittal – The System.

Faster – better – everywhere.



DK 7281.200

Keyboard drawer 1 U

State: 2024.9.26 (Source: [rittal.com/lt-en](https://www.rittal.com/lt-en))

ENCLOSURES

POWER DISTRIBUTION

CLIMATE CONTROL

IT INFRASTRUCTURE

SOFTWARE & SERVICES

FRIEDHELM LOH GROUP



DK 7281.200 - Keyboard drawer 1 U for two pairs of 482.6 mm (19") mounting angles

For the 482.6 mm (19") mounting level, suitable for accommodating keyboards up to 420 x 40 x 220 mm, fully extendible, lockable.



Features

Model No.	DK 7281.200
Benefits	Space-saving drawer to accommodate 482.6 mm (19") keyboards Fully extendible, with strain relief and hinged cable support. Lockable at the front
Applications	For mounting two between 482.6 mm (19") mounting angles
Material	Sheet steel
Colour	RAL 7035
Supply includes	Key
Max. keyboard dimensions (WxHxD)	420 x 40 x 220 mm
Distance between levels	460 - 800 mm
Packs of	1 pc(s).
Weight/pack	4.88 kg
Net weight	4.68
Gross weight	4.7
PCF/PU (Cradle-to-Gate)	18.6 kg CO2 eq (Cat B)

Features

Note on the PCF class	Category B: PCF value (cradle-to-gate) approximated based on product weight and self-declared
Customs tariff number	94039910
EAN	4028177390102
ETIM 7.0	EC002620
ECLASS 8.0	27189261

Tender text

Keyboard drawer, 482.6 mm (19"), 1 U

Material: Sheet steel, spray finished in RAL 7035

Installation depth 427 mm