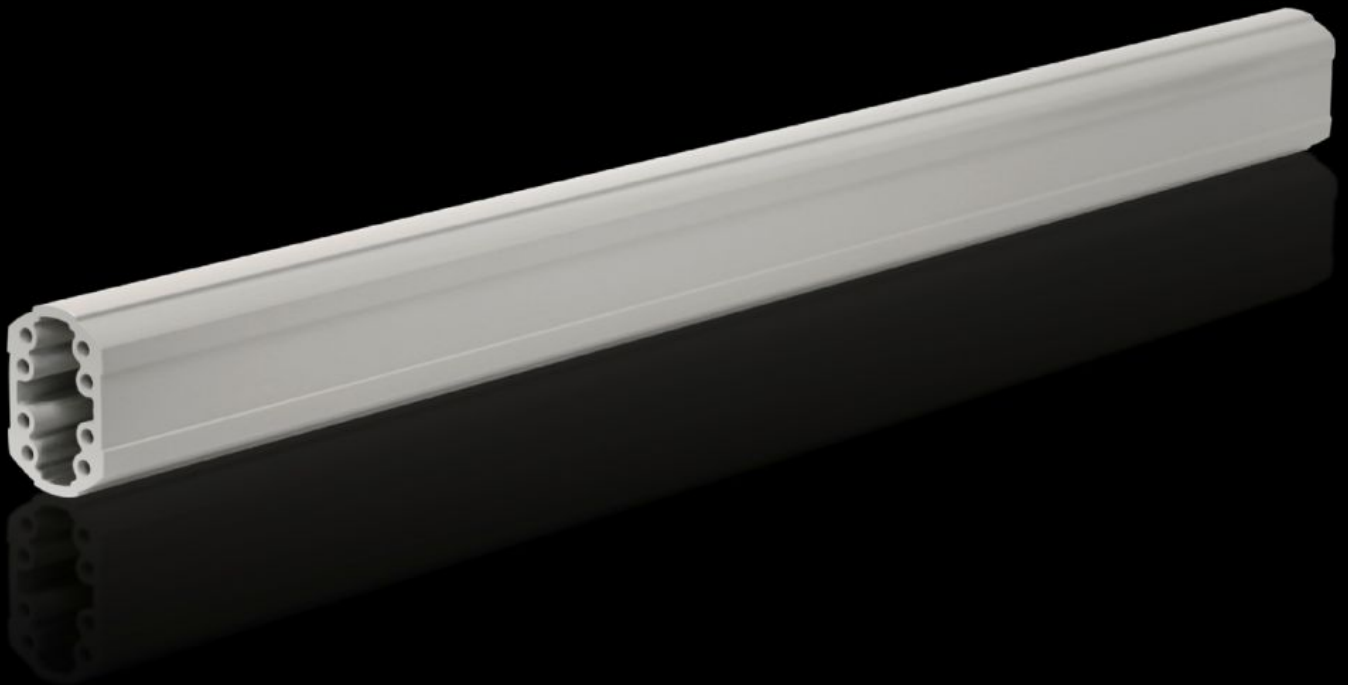


Rittal – The System.

Faster – better – everywhere.



CP 6206.100

Support section CP 60

State: 2024.9.27 (Source: [rittal.com/lt-en](https://www.rittal.com/lt-en))

ENCLOSURES

POWER DISTRIBUTION

CLIMATE CONTROL

IT INFRASTRUCTURE

SOFTWARE & SERVICES

FRIEDHELM LOH GROUP



CP 6206.100 - Support section CP 60 Solid

Attachment to the connection components with 4 self-tapping screws in the screw channel. May be cut to any required length, no thread-tapping required. Closed cable duct with a large cross-section.

Features

| | |
|-----------------------|---|
| Model No. | CP 6206.100 |
| Product description | Attachment to the connection components with 4 self-tapping screws in the screw channel. May be cut to any required length, no thread-tapping required. Closed cable duct with a large cross-section. |
| Material | Support section: Extruded aluminium section |
| Colour | Support section: RAL 7035 |
| Supply includes | Support section |
| Length | 1,000 mm |
| Dimensions | Width: 59 mm Height: 85 mm Length: 1,000 mm |
| Packs of | 1 pc(s). |
| Weight/pack | 5 kg |
| Net weight | 4.9 |
| Gross weight | 5.158 |
| Customs tariff number | 76042100 |
| EAN | 4028177684270 |
| ETIM 7.0 | EC000882 |
| ECLASS 8.0 | 27400556 |

Approvals

Explanations

Manufacturer's declaration