

Rittal – The System.

Faster – better – everywhere.



IW 6141.200 Pedestal, complete

State: 2024.9.26 (Source: [rittal.com/lt-en](https://www.rittal.com/lt-en))

ENCLOSURES

POWER DISTRIBUTION

CLIMATE CONTROL

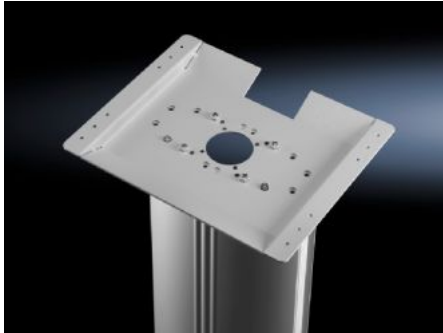
IT INFRASTRUCTURE

SOFTWARE & SERVICES

FRIEDHELM LOH GROUP



IW 6141.200 - Pedestal, complete for IW worktops



Features

Model No.	IW 6141.200
Design	Stationary
Benefits	Reliable protection of cable management
Colour	RAL 7035
Supply includes	Cross member Vertical aluminium moulding, may be opened Worktop attachment
Load capacity (static)	25 kg
Dimensions	Width: 600 mm Height: 946 mm Depth: 660 mm
Packs of	1 pc(s).
Weight/pack	33.65 kg
Net weight	28.5
Gross weight	31.2
Customs tariff number	94039910
EAN	4028177305762
ETIM 7.0	EC002534
ECLASS 8.0	27182604