

Rittal – The System.

Faster – better – everywhere.



SV 3527.000

PLS special busbars E-Cu

State: 2025.4.4 (Source: [rittal.com/It-en](https://www.rittal.com/It-en))

ENCLOSURES

POWER DISTRIBUTION

CLIMATE CONTROL

IT INFRASTRUCTURE

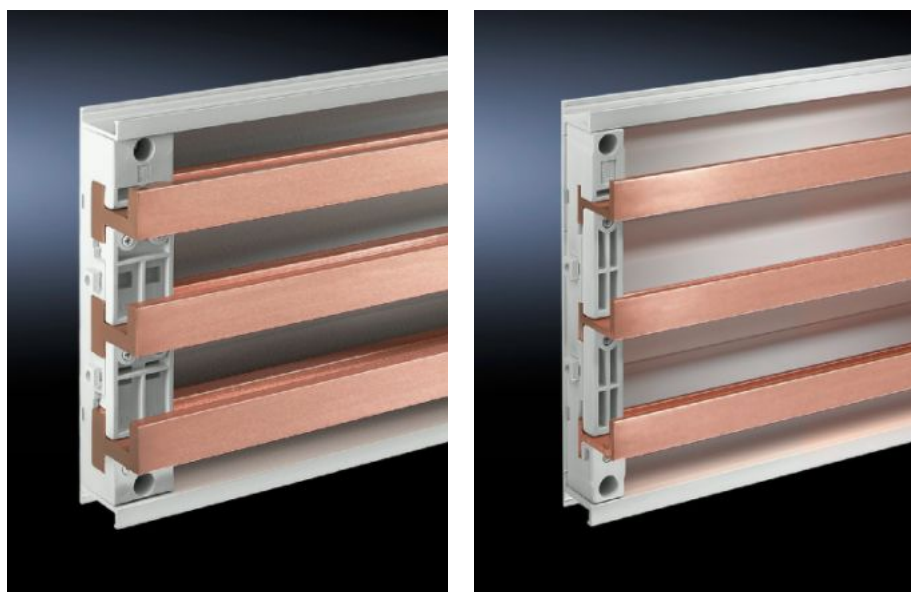
SOFTWARE & SERVICES

FRIEDHELM LOH GROUP



SV 3527.000 - PLS special busbars E-Cu

Lengths range from 495 mm to 2400 mm.



Features

Model No.	SV 3527.000
Material	E-Cu
Bar thickness	10 mm
Cross-section	900 mm ²
Note	May be cut individually to required length
Busbar type	Busbar E-Cu
To fit busbar system	PLS 1600
Dimensions	Length: 495 mm
To fit	Width: = 600 mm
Packs of	3 pc(s).
Net weight	11.85
Gross weight	12
Copper weight (kg per piece)	4
Customs tariff number	74071000

Features

EAN	4028177043756
ETIM 9	EC001522
ETIM 8	EC001522
ECLASS 8.0	27370303

Approvals

Approvals	UL + C-UL (listed)
Explanations	Declaration of conformity Declaration of conformity UK

Tender text

PLS special busbar E-Cu 1600 A

Bar thickness: 10 mm

Rated current: 1600 A

Cross-section: 900 mm²

Length: 495 mm

Enclosure width: 600 mm

(Rittal PS/TS/ES enclosure systems)