

# Rittal – The System.

Faster – better – everywhere.



## SV 9340.460 OM adaptors

State: 27/9/2024 (Source: [rittal.com/in-en](http://rittal.com/in-en))

ENCLOSURES

POWER DISTRIBUTION

CLIMATE CONTROL

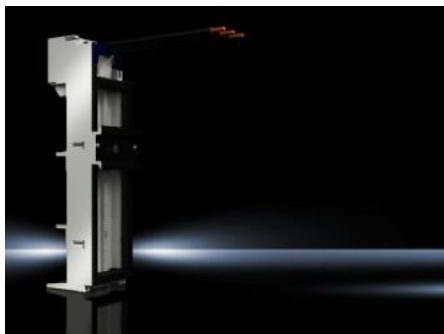
IT INFRASTRUCTURE

SOFTWARE & SERVICES

FRIEDHELM LOH GROUP



# SV 9340.460 - OM adaptors with connection cables



## Features

Model No.	SV 9340.460
Material	Polyamide Fire protection corresponding to UL 94-V0
Colour	Chassis: RAL 7035
Connection cables (AWG)	AWG 10
Rated current max.	32 A
Rated operating voltage	690 V, 3~
Electrical ratings UL (SCCR)	30 kA - 600 V, Fuse Class K5 max. 60 A, JDDZ/7 30 kA - 480 V, Combination Motor Controller max. 63 A, NKJH/7 65 kA - 600 V, Fuse Class J max. 60 A, JDDZ/7 65 kA - 480 V, Manual Motor Controller max. 63 A, NLRV/7 65 kA - 480 V, Combination Motor Controller max. 63 A, NKJH/7
For bar systems with centre-to-centre spacing	60 mm
Length of connection cable	130 mm
Support rail type	TS 55D
Note	The technical data may vary for UL applications
Number of poles	3-pole
Dimensions	Width: 55 mm Height: 208 mm
Support rails Qty/height	1 / 10 mm

# Features

---

To fit busbars	Height: 5, 10 mm
Support frame (W x H)	55 mm x 170 mm
Packs of	1 pc(s).
Weight/pack	0.34 kg
Net weight	0.32
Gross weight	0.334
Copper weight (kg per piece)	0.074
Customs tariff number	85369095
EAN	4028177502567
ETIM 7.0	EC001531
ECLASS 8.0	27370304

# Approvals

---

Approvals	ABS C-UL DNV-GL Lloyds Register of Shipping UL + C-UL (listed)
Explanations	Declaration of conformity Declaration of conformity UK

# Tender text

OM adaptor 32 A

OM adaptor 32 A with connection cable, 3-pole,  
for busbar thickness 5/10 mm and PLS 800/1600

Technical specifications

Connection cable: AWG 10 / approx. 6 qmm

Support frame: 55 x 170 mm

PinBlock: -

Support rail: 1

System:

Rittal RiLine60